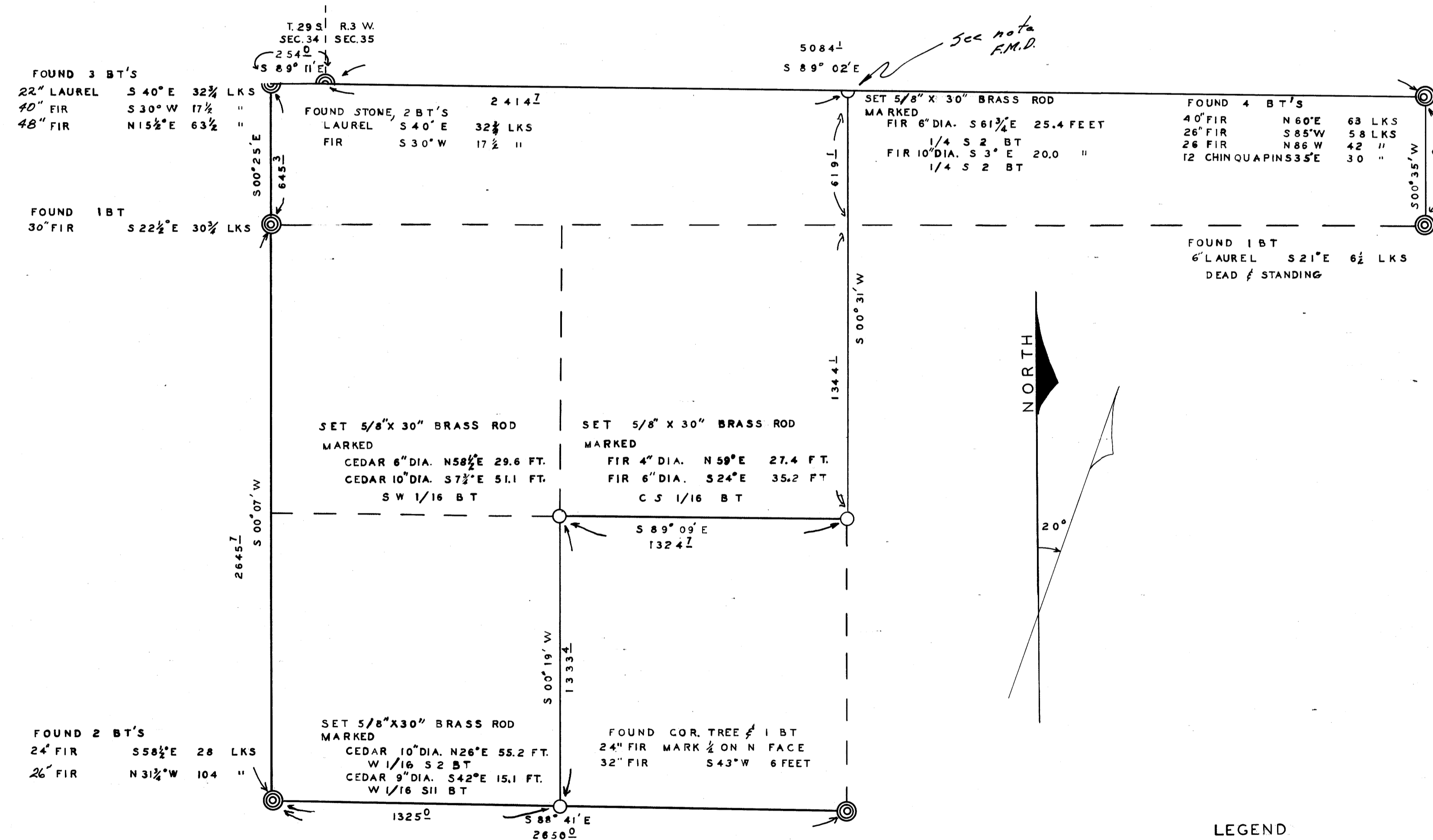


COUNTY SURVEYORS FILE
DO NOT REMOVE FROM OFFICE

MAP OF SURVEY
FOR

NATIONAL PLYWOOD INC.

SUBDIVISION OF SECTION 2, T.30 S., R.3 W., W.M.
DOUGLAS COUNTY, OREGON



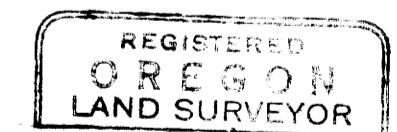
THIS MAP DEPICTS AN ACTUAL SURVEY
MADE BY ME IN JANUARY & FEBRUARY 1960

Bruce A. Shaner
BRUCE A. SHANER L.S. 430

WITNESS:

William James

James B. Griffin



Bruce A. Shaner
OCT. 4, 1957
Bruce A. Shaner
430

LEGEND

- ⊙ ORIGINAL CORNER FOUND
- CORNER SET THIS SURVEY
- LINE TRAVERSED
- - - LINE PROJECTED

BEARINGS BASED ON MAGNETIC NEEDLE AT
NORTHWEST CORNER OF SECTION 2
MAGNETIC DECLINATION:- 20° EAST

SCALE: 1 INCH = 400 FEET



Note:- After considerable discussion regarding this
cor. setting, due to finding 1/4 Cor. Sec 35 T29S R3W
and feeling the tie should prevail, an opinion from
U.S. Cadastral Engis. Office would seem to support
the above location. See Correspondence file
1960-1961
11/3/1960 *Paul M. Bondy*

FILED
RECEIVED

MAR 15 1961

COUNTY SURVEYOR
DOUGLAS COUNTY, ORE.

MAP FILE...M 17-51

JBC