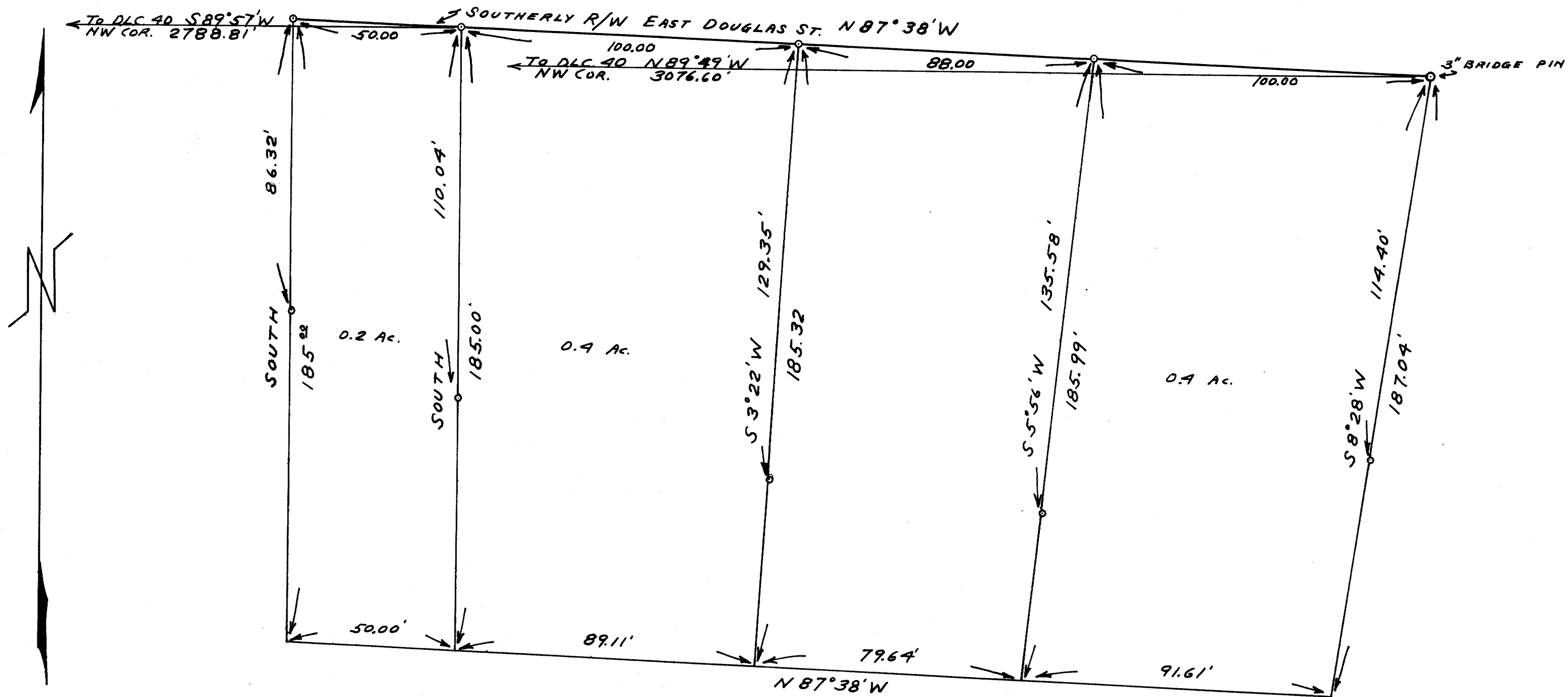


C.S. FILE #1125
M17-44

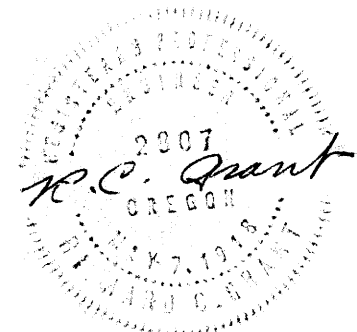


SURVEY FOR DEED DESCRIPTION
in
THOMAS STEVENS D.L.C. NO. 40
T. 27S., R. 5 W., W.M., DOUGLAS COUNTY

GRANT & EVANS ENGINEERS
 ROSEBURG, ORE. JAN. 27, 1953
 SCALE: 1" = 30'

○ = 1/2" IRON PIPE

COUNTY SURVEYORS FILE DATA
DO NOT REMOVE FROM OFFICE



C.S. FILE # 1125
M17-44