

COUNTY SURVEYORS FILE UP
DO NOT REMOVE FROM OFFICE
SUBDIVISION of SECTIONS 29 & 32
T.31S., R.6W., W.M.

Scale 1" = 800' Feb. 1960

Set 7x7 Cedar Post from Orig Bts.
Scribed new Bts.
5" Fir N71 1/4 W 39 1/2 ft.
12" Fir S11 W 15 1/2 ft.
12" Fir N12 1/4 E 20 1/2 ft.
10" Fir S62 3/4 E 43 1/2 ft.

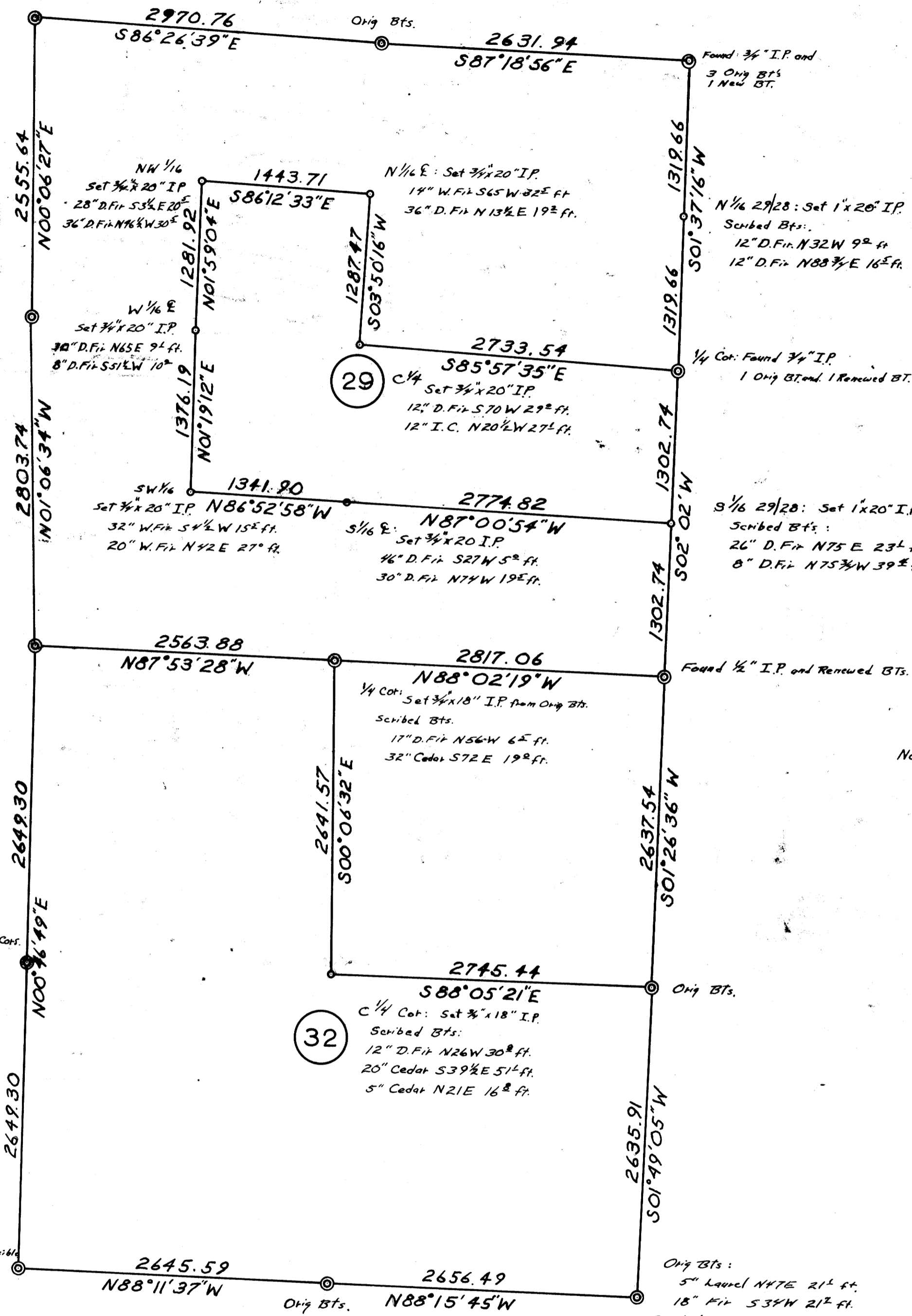
Orig Bts:
10" Laurel
Scribed new Bts:
10" D. Fir N77 1/2 E 31 1/2 ft.
30" I.C. S64 W 28 1/2 ft.

Set 3/4 x 18" I.P.
From Orig Bts.

1/4 Cor. Set 3/4 x 18" I.P.
at Mid Distance Between Sec. Corn.
Scribed Bts:
17" D. Fir N27 3/4 E 25 1/2 ft.
15" D. Fir S16 1/2 W 12 1/2 ft.

Set 3/4 x 18" I.P. in Rk. Md.
From Orig Bts:
8" Fir N17 W 50 1/2 ft. (down Scribe Visible)
6" Fir N17 E 57 1/2 ft. (stump.)
New Bts:
13" D. Fir N81 1/2 W 36 1/2 ft.
9" D. Fir N8 E 69 1/2 ft.
6" D. Fir S59 E 45 1/2 ft.
8" D. Fir S1 1/2 W 68 1/2 ft.

Orig Bts:
5" Laurel N47 E 21 1/2 ft.
18" Fir S34 W 21 1/2 ft.
Scribed Bts:
24" D. Fir N4 W 35 1/2 ft.
14" D. Fir N54 E 87 1/2 ft.
16" D. Fir S63 E 38 1/2 ft.



Note: all bearings are based on a magnetic bearing at the E 1/4 cor. Sec 29.

Survey Summary:

A closed traverse was run with transit and 300 ft. engineer's tape around the perimeter of the sections with a resulting error of closure within allowable limits. All section corners and 1/4 section corners were found except W 1/4 Cor. for Sec. 32. From data obtained from above mentioned traverse, the bearings and distances of the subdivision traverse was calculated and then ran in the field with transit and 300 ft. engineer's tape. Error of closure was again within allowable limits.

Engineer's Statement
I, Clifford M. Bryden, a registered engineer employed by Roseburg Lumber Co., do hereby certify that this survey as shown was done under my supervision and is accurately represented on this plat.

Clifford M. Bryden

FILED
RECEIVED

MAR 8 1960

COUNTY SURVEYOR
DOUGLAS COUNTY, ORE.