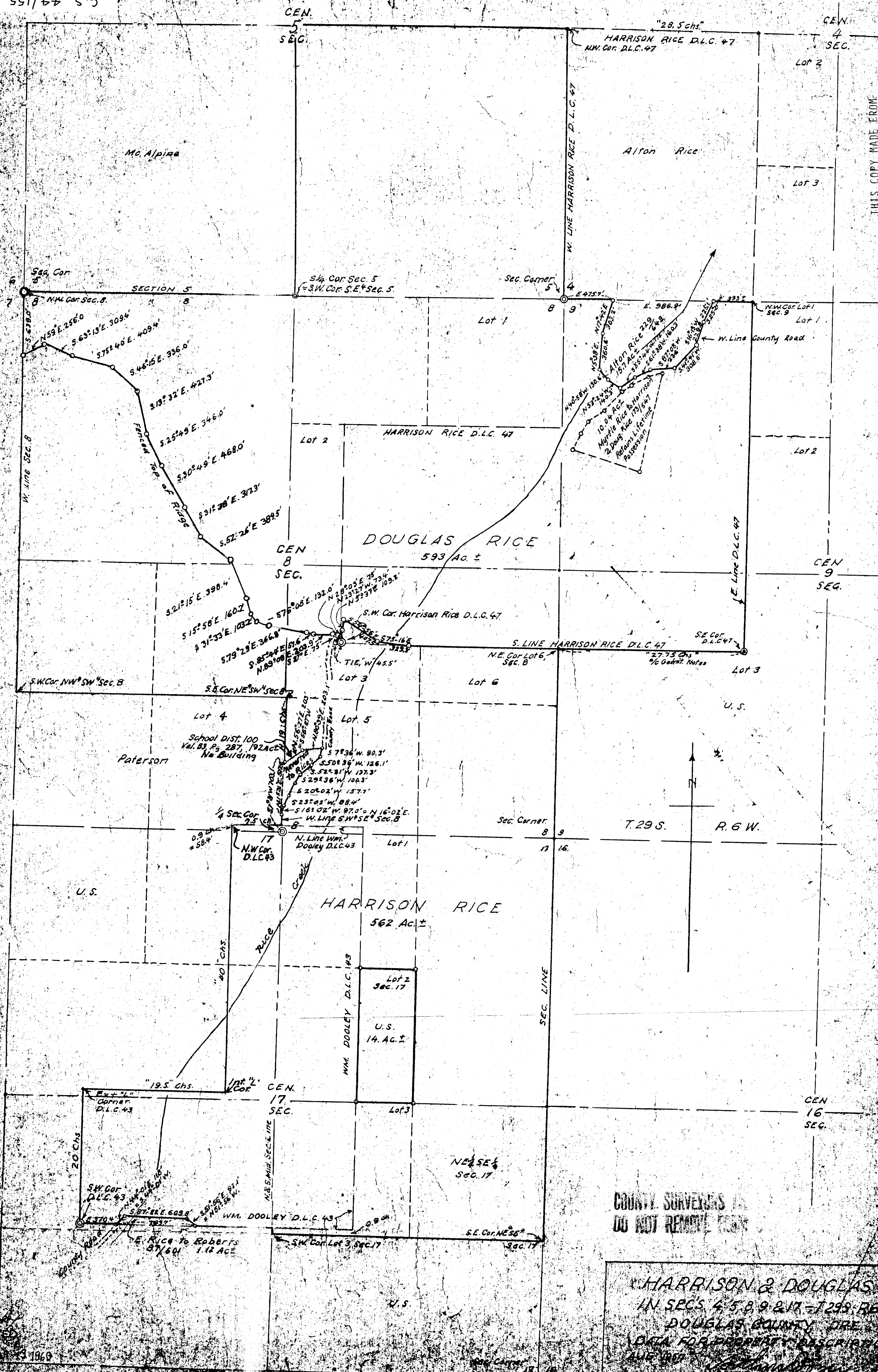


THIS COPY MADE FROM
A XEROX 2510
DATE JULY 12, 1989



COUNTY SURVEYORS
DO NOT REMOVE FROM

HARRISON & DOUGLAS RICE
IN SECS. 4, 5, 8, 9 & 17 - T.29 S. - R.6 W. -
DOUGLAS COUNTY, ORE.
DATA FOR PROPERTY DESCRIPTION
ALL INFO

FILED
RECORDED
1989
COUNTY SURVEYOR
DOUGLAS COUNTY, ORE.