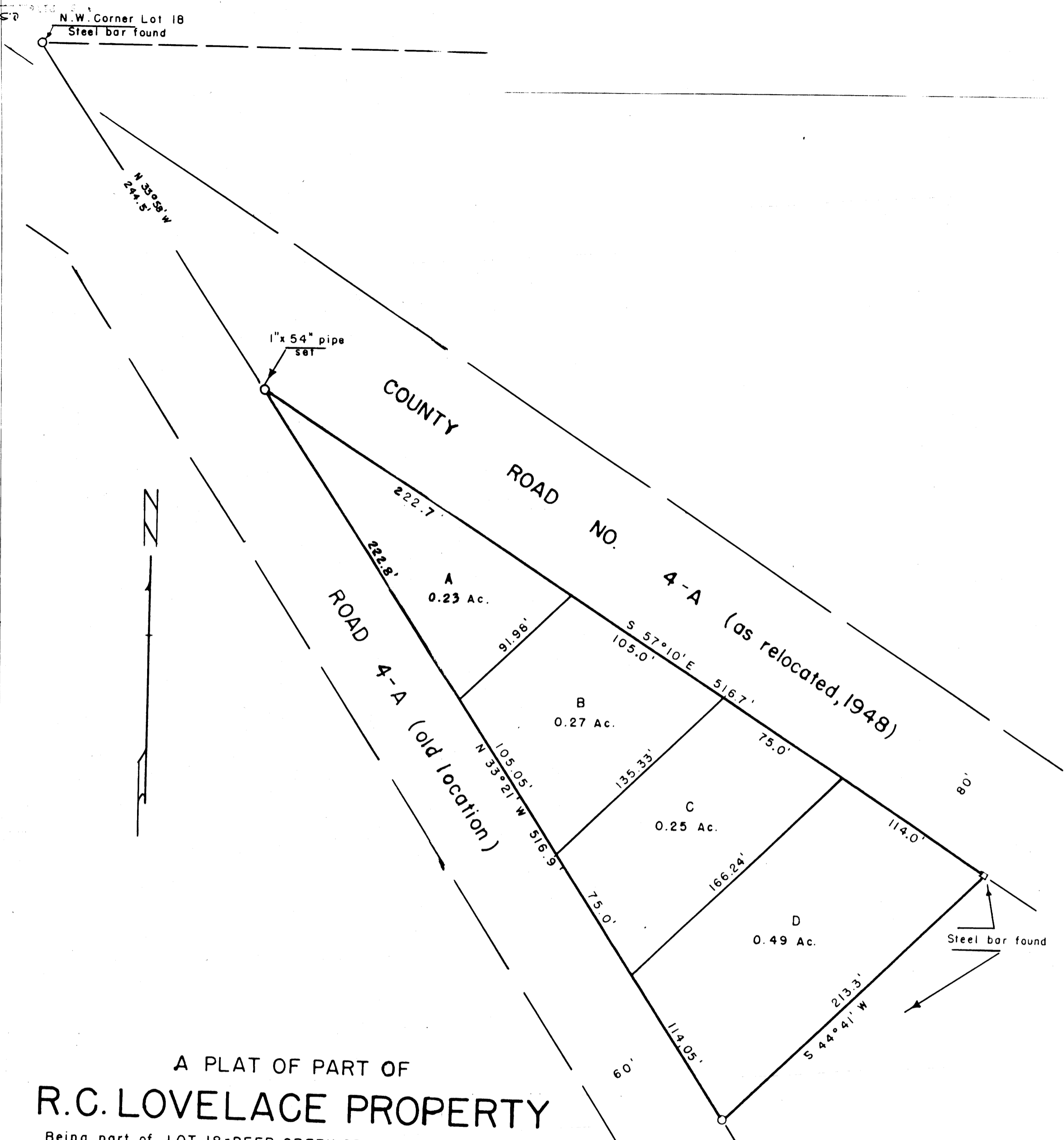


42-L1 W  
M 17-24  
C.S. 40/94

M 17-24  
C.S. 40/94



A PLAT OF PART OF  
**R.C. LOVELACE PROPERTY**

Being part of LOT 18-DEER CREEK ORCHARD TRACTS PLAT "A"  
 T 27 S - R 5 W Douglas Co., Oregon.  
 April 1951  
 Scale 1"=50'

**COUNTY SURVEYORS FILE LAW**  
**DO NOT REMOVE FROM OFFICE**

C.S. 40/94  
 M 17-24

THIS COPY MADE FROM  
 A XEROX 2510  
 DATE July 12, 1989

C.S. 40/94  
 M 17-24

Survey for R.C. Lovelace for acreage of plot in Lot 16, Plat "A",  
Deer Creek Home Orchard Tracts.

Began at the S.E. corner of Lot 16, marked only by original  
fence corner, run S 89°51' W 48.5 ft. to the intersection of South  
line of Lot 16 with the Westerly right of way of a proposed new  
road relocation where I set a 3/4" x 30" iron rod from which point  
I traverse the plot as shown by the accompanying plat.

TRAVERSE

Bearing	Distance	Cosine	Sine	North	South	East	West
S 89°51' W	824.33	0.00262	1.00000		2.16		824.33
N 31°51' E	512.28	0.84943	0.52770	435.15			270.33
N 83°15' E	351.83	0.11754	0.99307	41.35		349.39	
S 57°30' E	883.29	0.53730	0.84339				
				<u>476.50</u>	<u>476.75</u>	<u>744.96</u>	<u>1094.66</u>

ACREAGE

(834.47 x 2.19)/2 = 913.74  
 (433.11 x 277.52)/2 = 60,098.34  
 (43.41 x 366.77)/2 = 7,960.74  
 (474.59 x 744.96)/2 = 176,775.28  
 89.51 x 433.11 = 38,767.68  
284,515.78 sq. ft. = 6.53 acres

Less road on West side

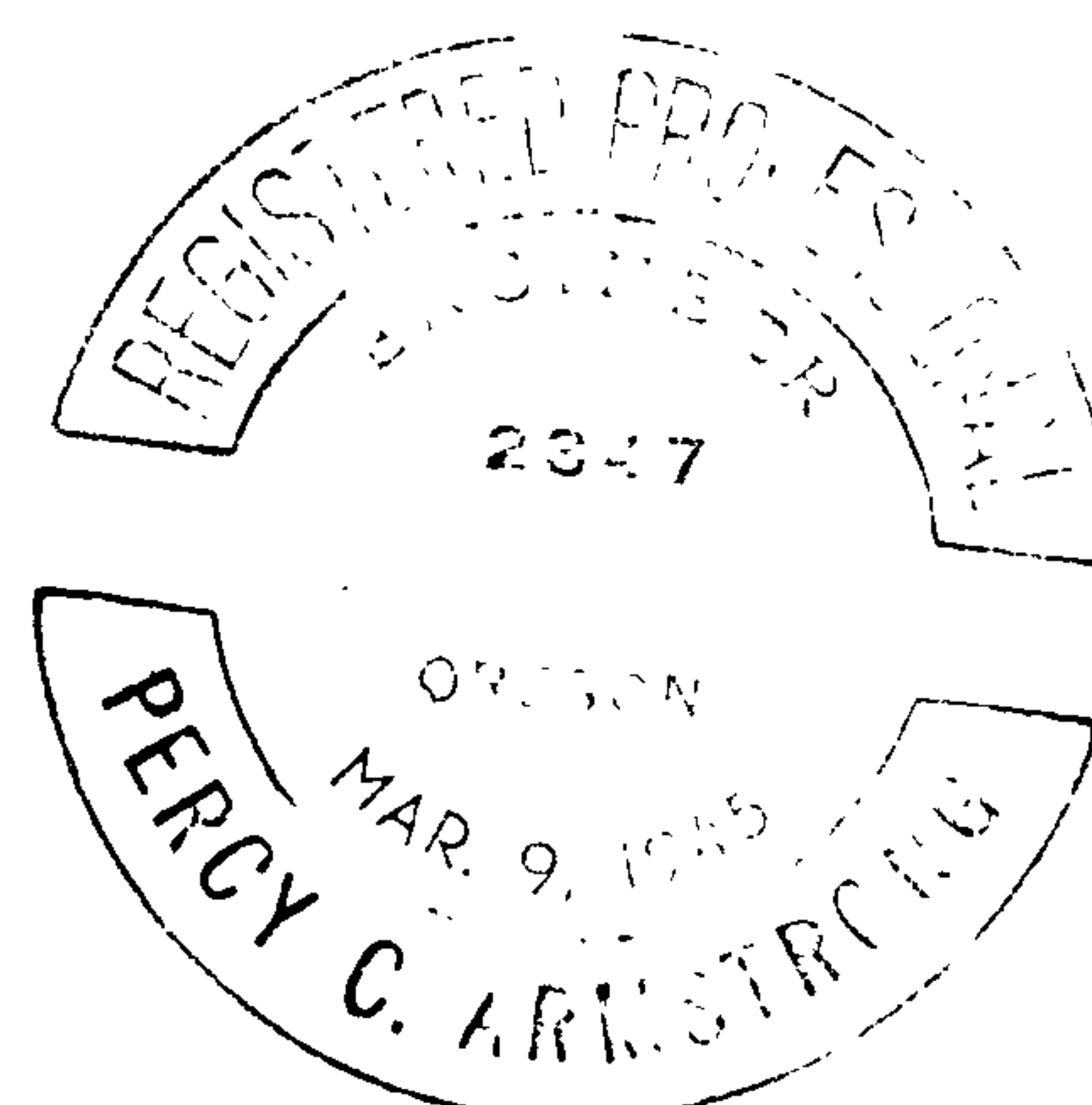
513 x 13.8 = 7080 sq. ft. = 0.16 acres

Total acres = 6.37

**FILED**  
**RECEIVED**

**FEB 20 1948**

**COUNTY SURVEYOR**  
**DOUGLAS COUNTY, ORE.**



40/94