

FILED
RECEIVED

JAN 11 1960

COUNTY SURVEYOR
DOUGLAS COUNTY, ORE.

COUNTY SURVEYORS FILE DATA
DO NOT REMOVE FROM OFFICE

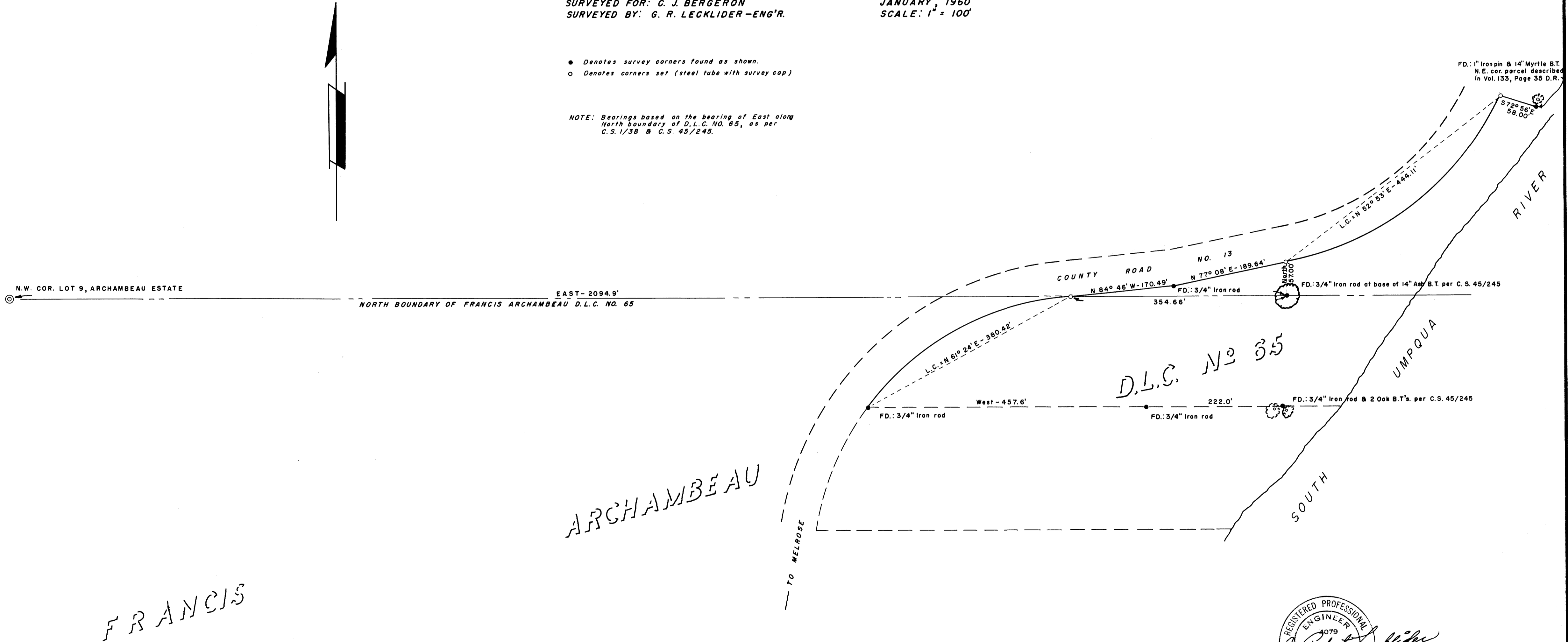
SURVEY TO ESTABLISH PROPERTY CORNERS SECTION 31, T 26 S, R 6 W, W. M.

SURVEYED FOR: C. J. BERGERON
SURVEYED BY: G. R. LECKLIDER-ENG'R.

JANUARY, 1960
SCALE: 1" = 100'

- Denotes survey corners found as shown.
- Denotes corners set (steel tube with survey cap)

NOTE: Bearings based on the bearing of East along North boundary of D.L.C. NO. 65, as per C.S. 1/38 & C.S. 45/245.



REGISTERED PROFESSIONAL
ENGINEER
1979
G. Robert Lecklider
OREGON
12.15.1956
G. ROBERT LECKLIDER

MAP FILE M 17 - 2

MAP FILE M 17 - 2