

FILED
RECEIVED

FEB 17 1960

COUNTY SURVEYOR
DOUGLAS COUNTY, ORE.

COUNTY SURVEYORS FILE DATA
DO NOT REMOVE FROM OFFICE

Survey For Deed Description

Sects 16+17, T.22S., R.5 W. W.M.

School Dist #22, Drain, Oregon

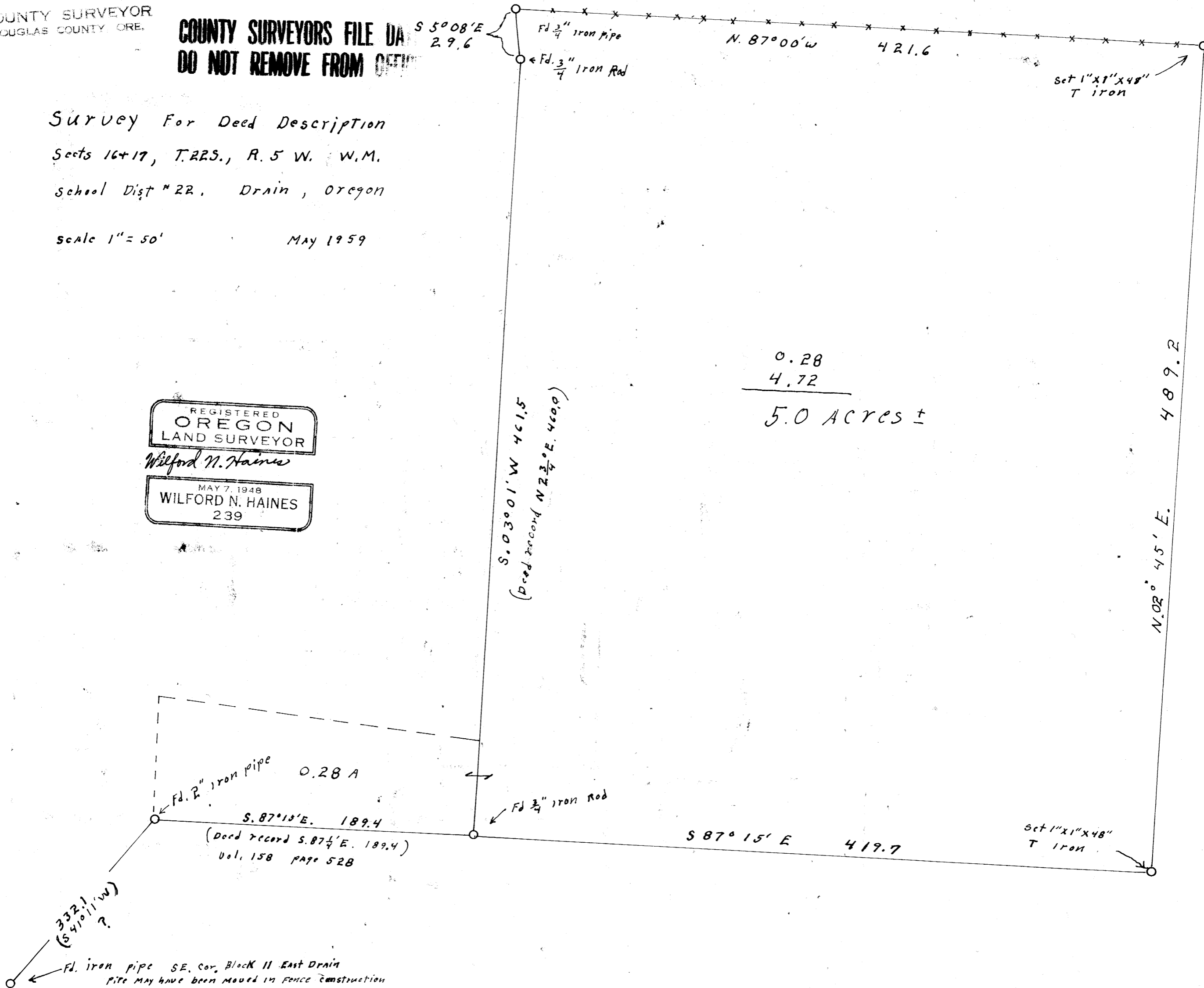
Scale 1" = 50'

MAY 1959

REGISTERED
OREGON
LAND SURVEYOR

Wilford N. Haines

MAY 7, 1948
WILFORD N. HAINES
239



M 17-19

MAP FILE M17-19 P