

COUNTY SURVEYORS FILE DATA  
DO NOT REMOVE FROM OFFICE

THIS COPY MADE FROM  
A XEROX 2510  
DATE July 12, 1989

**SURVEY TO LOCATE CERTAIN  
LOT CORNERS IN  
WEAVER TERRACE SUBDIVISION**

IN SECTION 9, T.30 S., R.4 W., W.M.  
DOUGLAS COUNTY, ORE.

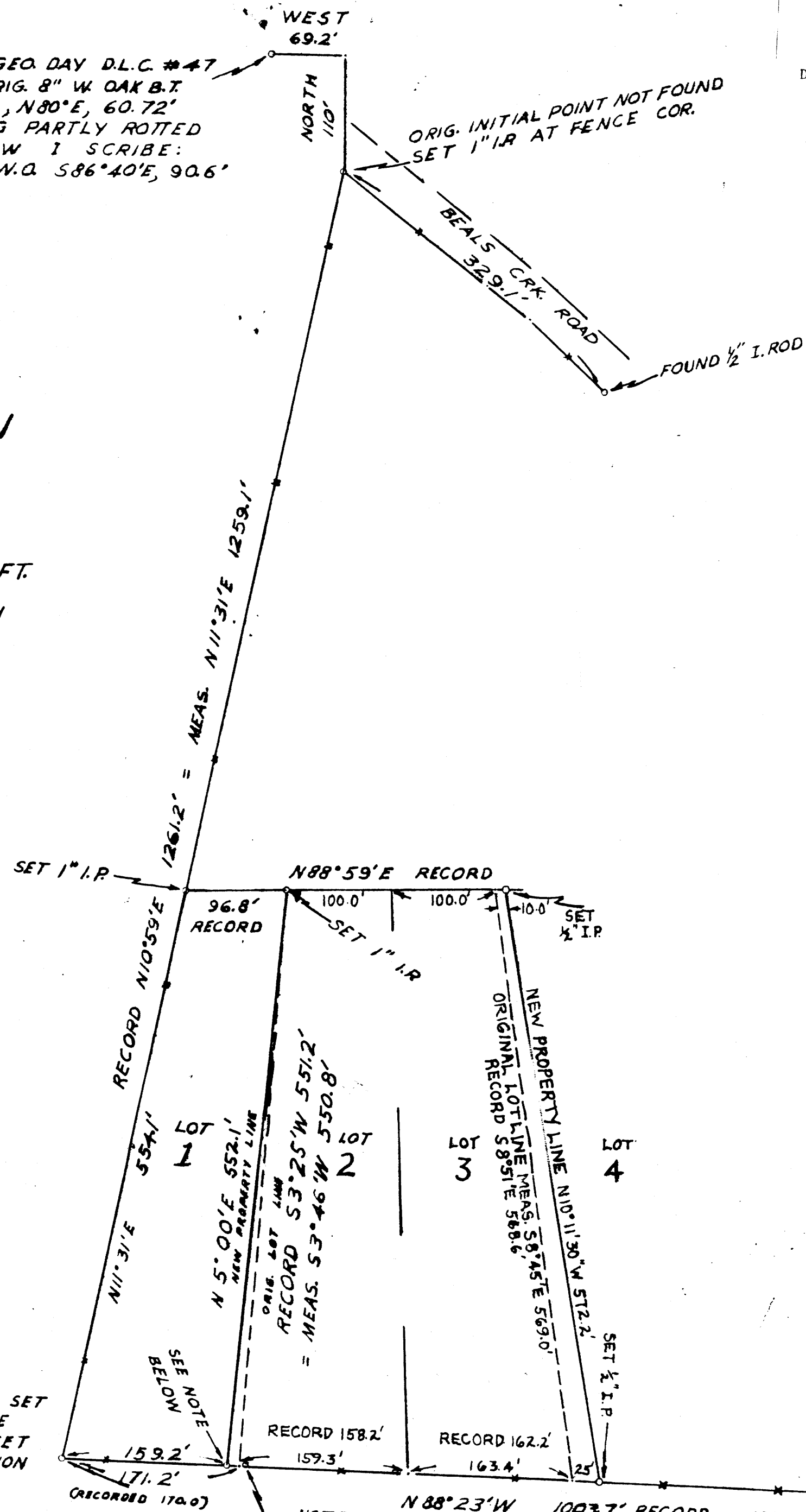
DECEMBER, 1959

SCALE 1 IN. = 100 FT.

Drawn By R.D. GLEDHILL

For R.M. THOMPSON

FOR: LEE ELLEFSON  
THOMAS L. WEAVER



FOUND 1/2" I. ROD. SET BY J. SMITH, HE STATES WAS SET IN ORIG. LOCATION OF OLD 1" I.P.

NOTE:

SET 1/2" I.P. BRG.'S TO 1959 C.S. B.T.'S:  
14" W.O., S55°22'W, 4.6'  
20" D.F., N74°10'E, 22.4'

NOTE: LOT CORNERS ON SOUTH LINE OF SUBDIV. SET AT PROPORTIONATE DISTANCE  
N 88°23'W 1003.7' RECORD = 1010.8' MEASURED  
FOUND 1/2" COR. PER G.S. 1959 SURVEY  
178.92' FROM S.W. COR. OF SUBDIVISION  
& 1.42' NORTH OF SUBDIVISION LINE

FILED & RECEIVED

FEB 16 1960

COUNTY SURVEYOR  
DOUGLAS COUNTY, ORE.

M17-17

M17-17