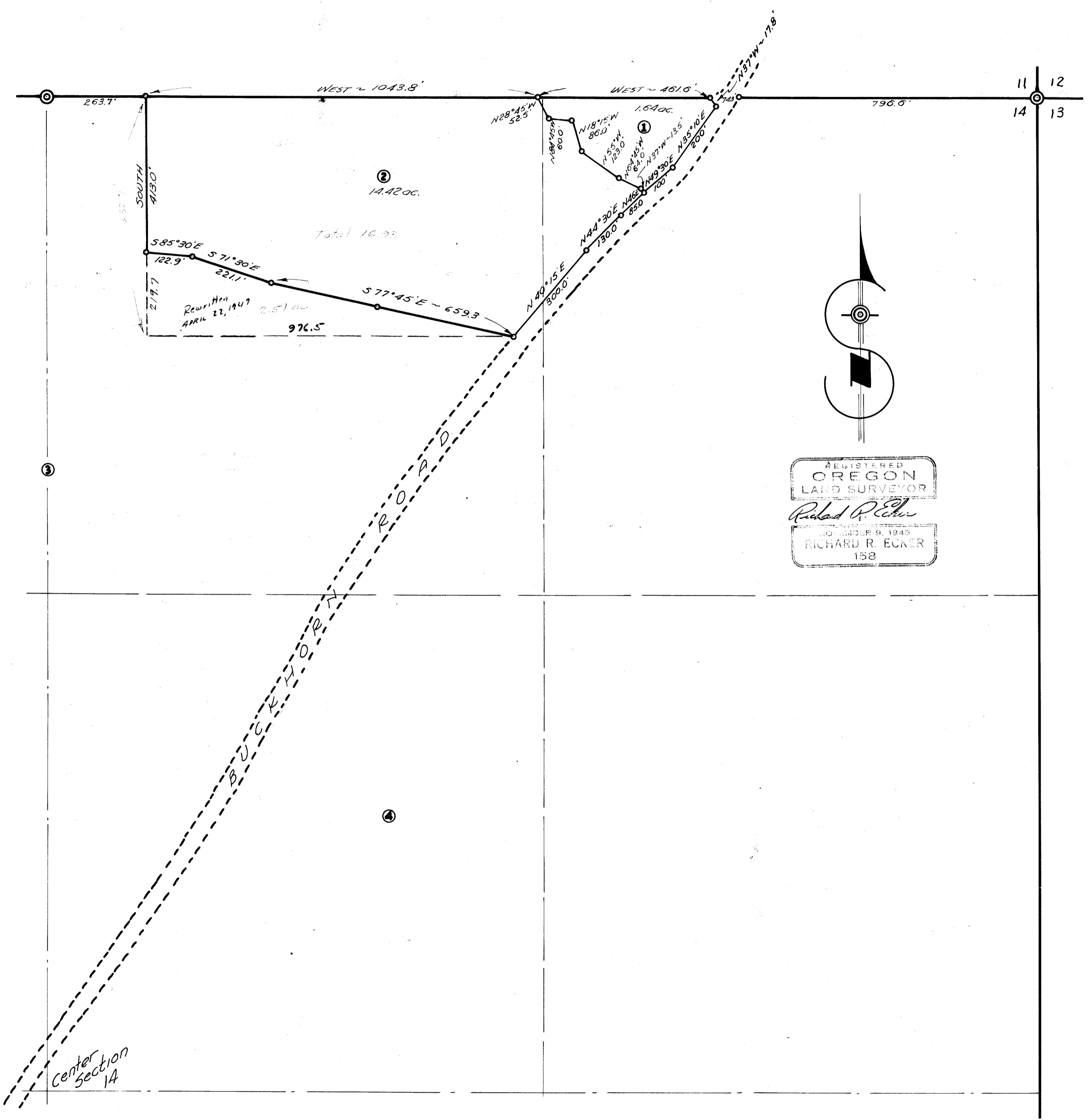


62-91W  
P/04 471.5'



EIFERT ESTATE  
 Sec. 14, T27S, R4W, W.M.  
 Douglas Co. Oregon

APRIL, 1947 Scale: 1" = 200'

COUNTY SURVEYORS FILE DATA  
 DO NOT REMOVE FROM OFFICE

CS FILE FOLDER

CONTAINS

MORE

INFORMATION