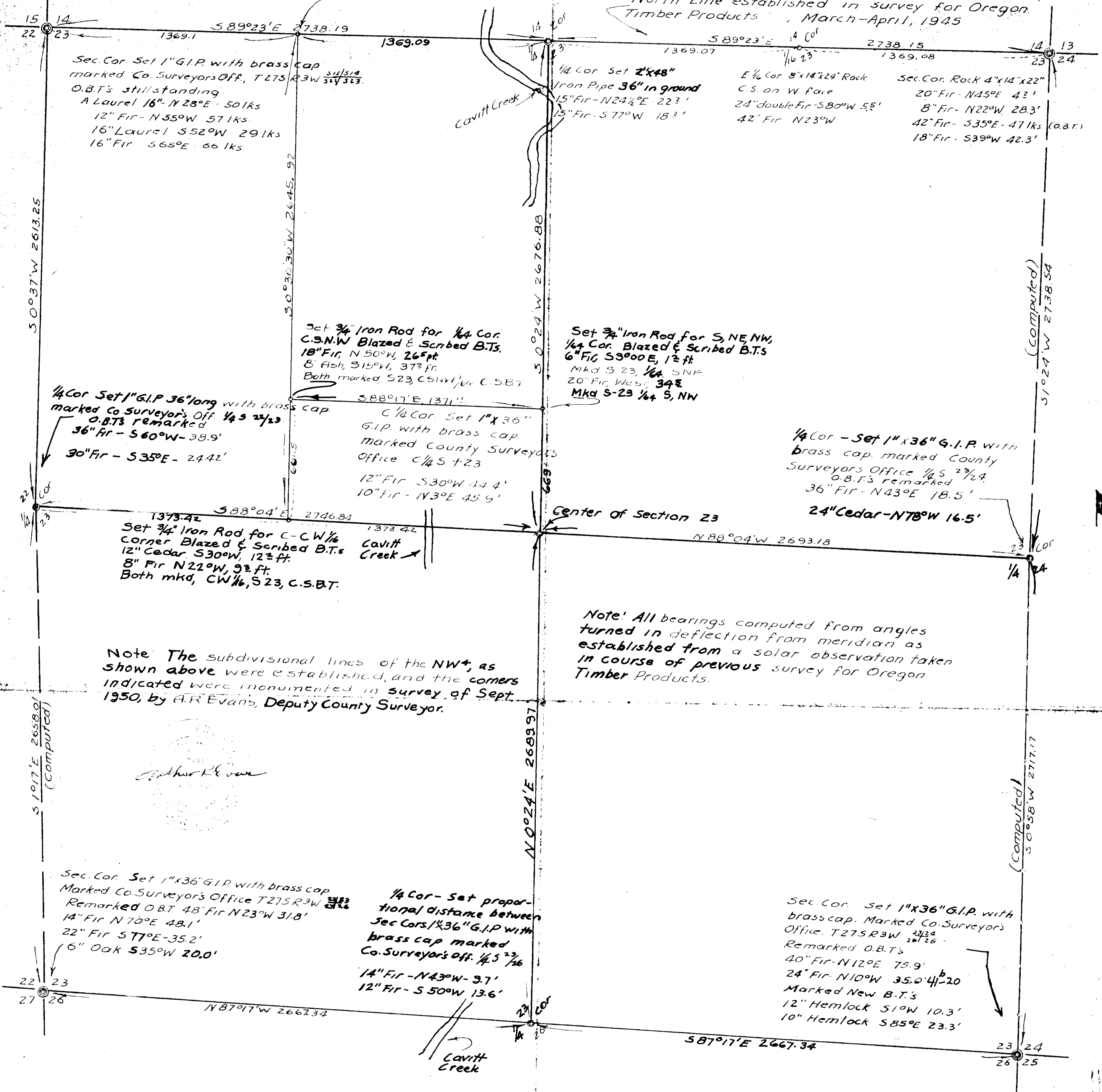


8L-91W
281/83 S.O

The West 1/6 Corner, Secs. 14 & 23, is a steel "T" fence post set by Co. Surveyor in survey for C.J. Witchell, Sept. 25, 1947. From which, a 24" White Fir bears S60°40'W, 80.3 ft & an 18" Chinquapin (down now) bears N16°15'W, 19.4 ft. From corner & marked new B.T., an 18" White Fir, N36°W, 34.7 ft. B.T. & scribed W 1/6 S 14, C.S.B.T.

North Line established in survey for Oregon Timber Products, March-April, 1945



Note: The subdivisional lines of the NW 1/4, as shown above were established, and the corners indicated were monumented in survey of Sept. 1950, by A.R. Evans, Deputy County Surveyor.

Note: All bearings computed from angles turned in deflection from meridian as established from a solar observation taken in course of previous survey for Oregon Timber Products.

COUNTY SURVEYOR'S OFFICE DOUGLAS COUNTY OREGON LEGAL SUBDIVISION SECTION 23, T27S, R3W, W.M.

BEN B. IRVING COUNTY SURVEYOR
SURVEYED, APRIL-MAY 1947

SCALE 1" = 400'



COUNTY SURVEYORS FILE DATA
DO NOT REMOVE FROM OFFICE

THIS COPY MADE FROM
A XEROX 2510
DATE 6-6-89

C.S. 38/187 Vol 5 P 37
M16-78