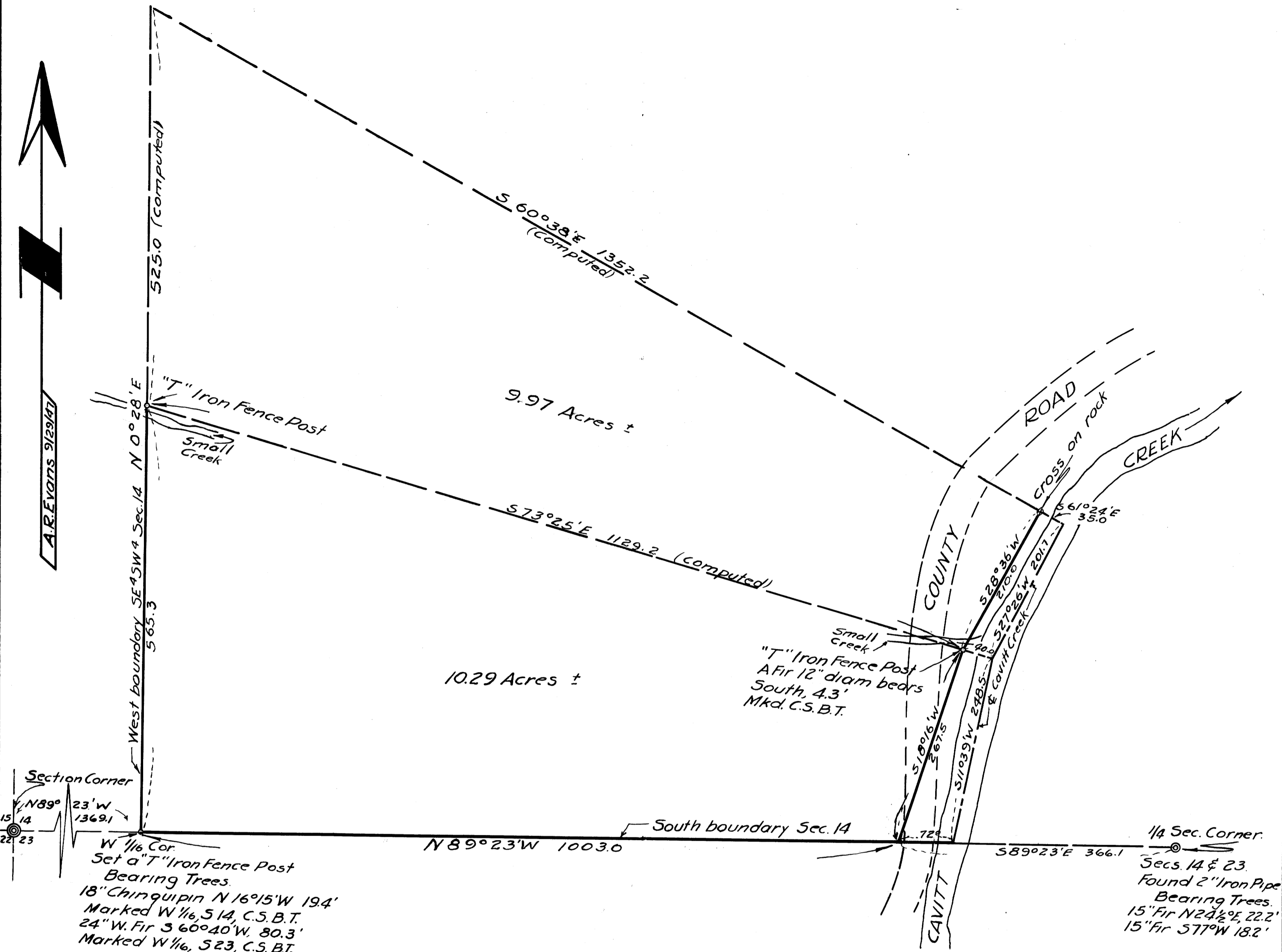


A.R. Evans 9/29/47



Section Corner
 N 89° 23' W 1369.1
 W 1/6 Cor.
 Set a "T" Iron Fence Post
 Bearing Trees.
 18" Chinquipin N 16° 15' W 19.4'
 Marked W 1/6, S 14, C.S.B.T.
 24" W. Fir S 60° 40' W, 80.3'
 Marked W 1/6, S 23, C.S.B.T.

1/4 Sec. Corner.
 Secs. 14 & 23.
 Found 2" Iron Pipe
 Bearing Trees.
 15" Fir N 24 1/2° E, 22.2'
 15" Fir S 77° W 18.2'

COUNTY SURVEYOR'S OFFICE
DOUGLAS COUNTY OREGON
CERTAIN DEED DESCRIPTIONS
SE 1/4, SW 1/4, SEC 14, T 27 S, R 3 W. W.M.
 BEN B IRVING, COUNTY SURVEYOR
 SURVEYED, SEPTEMBER 25, 1947

SCALE 1" = 100'

COUNTY SURVEYORS FILE DATA
DO NOT REMOVE FROM OFFICE



Requiring the legal description of A & B as two separate parcels involving the S.W. cor: of the S.W. qv: of section 14 Township 27 S. R. 3. W. of T.M.

