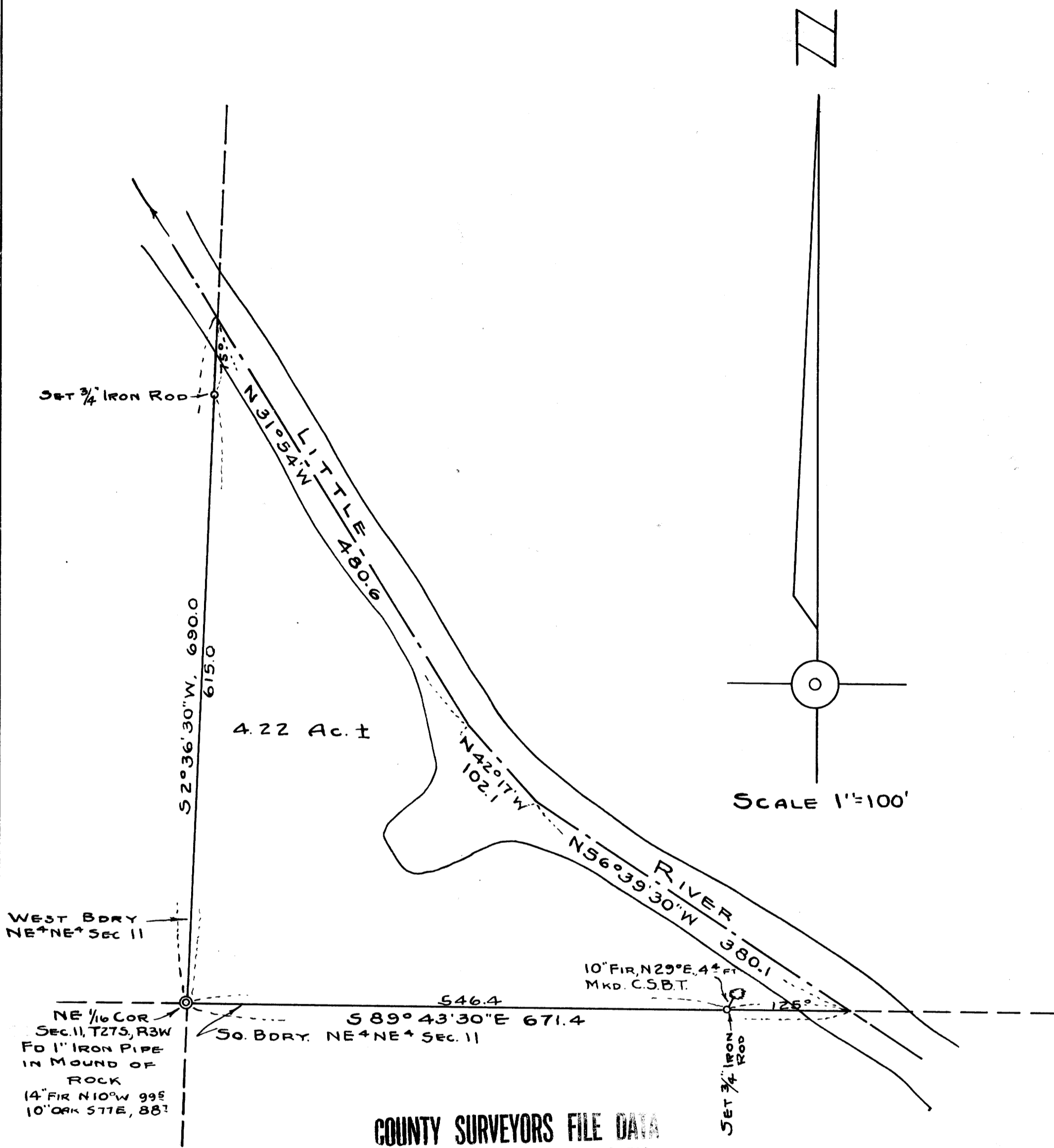
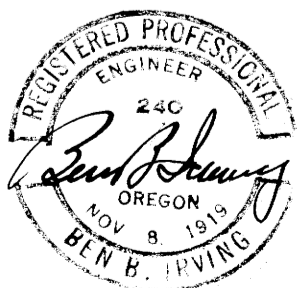


C.S. 166/43



COUNTY SURVEYORS FILE DATA
DO NOT REMOVE FROM OFFICE

COUNTY SURVEYOR'S OFFICE DOUGLAS COUNTY OREGON SURVEY FOR DEED DESCRIPTION NE 4 NE 4, SEC. 11, T27S, R3W, WM



BEN. B. IRVING COUNTY SURVEYOR
SURVEYED, OCTOBER 25, 1949, BY B.B.I.
PLATTED, NOVEMBER 23, 1949 BY A.R.E.