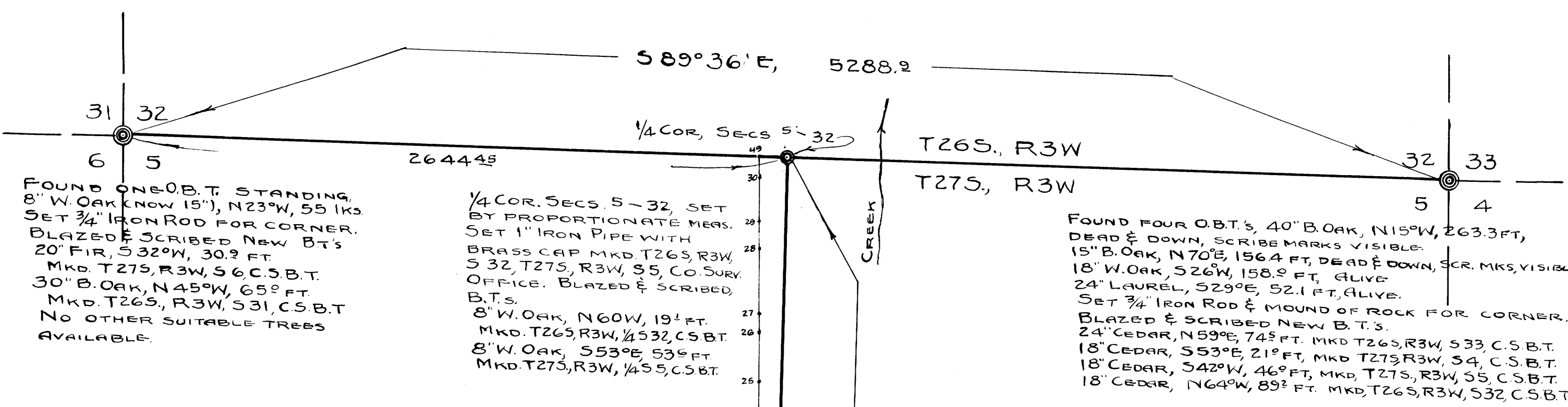
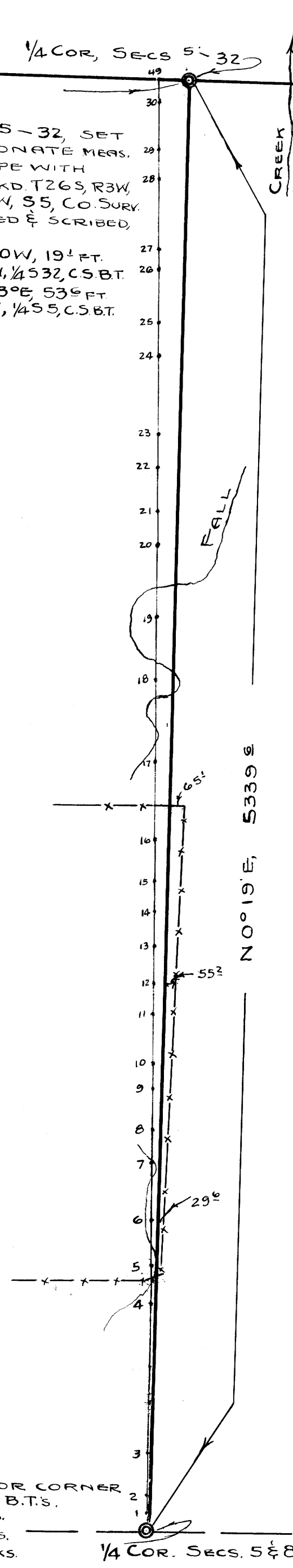


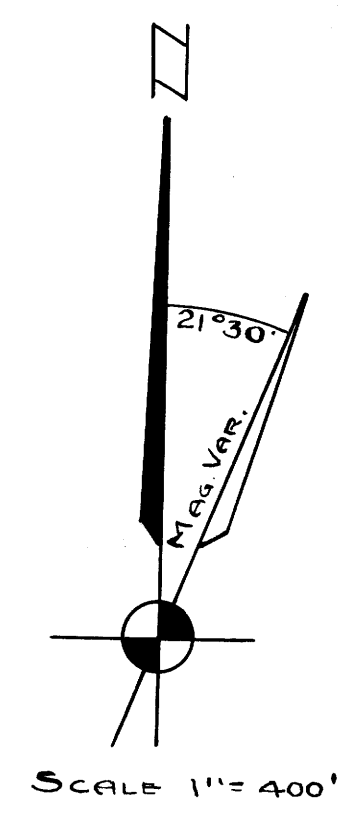
12-21-54
19/44 27.1 5.2



TRAVERSE DATA		
1 2 3 = TRAVERSE & STATIONS		
BEARINGS AND DISTANCES		OFFSET TO TRUE LINE
1/4 COR 5/8		
1	N 4°00' E, 755'	48' WEST
2	N 0°53' W, 655'	38' WEST
3	N 1°15'30" W, 1552	08' EAST
4	N 0°47' W, 5542	114' EAST
5	N 0°38'30" W, 1521	141' EAST
6	N 0°32'30" W, 1589	164' EAST
7	N 0°25' W, 2069	19° EAST
8	N 1°25' W, 1129	224' EAST
9	N 0°58' W, 1575	26° EAST
10	N 0°07' W, 905	267' EAST
11	N 0°58'30" W, 1884	302' EAST
12	N 0°39'30" W, 1131	322' EAST
13	N 0°52'30" W, 1282	352' EAST
14	N 0°12' W, 1295	367' EAST
15	N 0°56'30" W, 1151	392' EAST
16	N 0°54'30" W, 147'	424' EAST
17	N 0°51' W, 2952	484' EAST
18	N 0°42'30" W, 3052	538' EAST
19	N 0°33' W, 2295	572' EAST
20	N 0°35'30" W, 2591	612' EAST
21	N 0°37' W, 1202	634' EAST
22	N 1°31' W, 1651	687' EAST
23	N 1°23'30" W, 1192	722' EAST
24	N 1°21' W, 2875	808' EAST
25	N 1°08'30" W, 1229	838' EAST
26	N 0°57' W, 1978	881' EAST
27	N 0°59'30" W, 789	898' EAST
28	N 0°39'30" W, 2529	942' EAST
29	N 1°01'30" W, 992	96° EAST
30	N 3°09' W, 1792	1074' EAST
49	S 88°56' E, 1101	
1/4 COR 5/8		



ALL BEARINGS SHOWN ARE TRUE AND WERE CALCULATED FROM ANGLES TURNED IN DEFLECTION FROM A TRUE MERIDIAN ESTABLISHED BY SOLAR OBSERVATION TAKEN DURING THE COURSE OF THIS SURVEY.



COUNTY SURVEYOR'S OFFICE
DOUGLAS COUNTY OREGON
SURVEY TO ESTABLISH
N. & S. MID-SECTION LINE
SECTION 5, T27S, R3W, WM.

BEN B. IRVING, COUNTY SURVEYOR
SURVEYED & PLATTED, OCT. 1950, BY
A. R. EVANS, DEP. COUNTY SURVEYOR



COUNTY SURVEYORS FILE DATA
DO NOT REMOVE FROM OFFICE