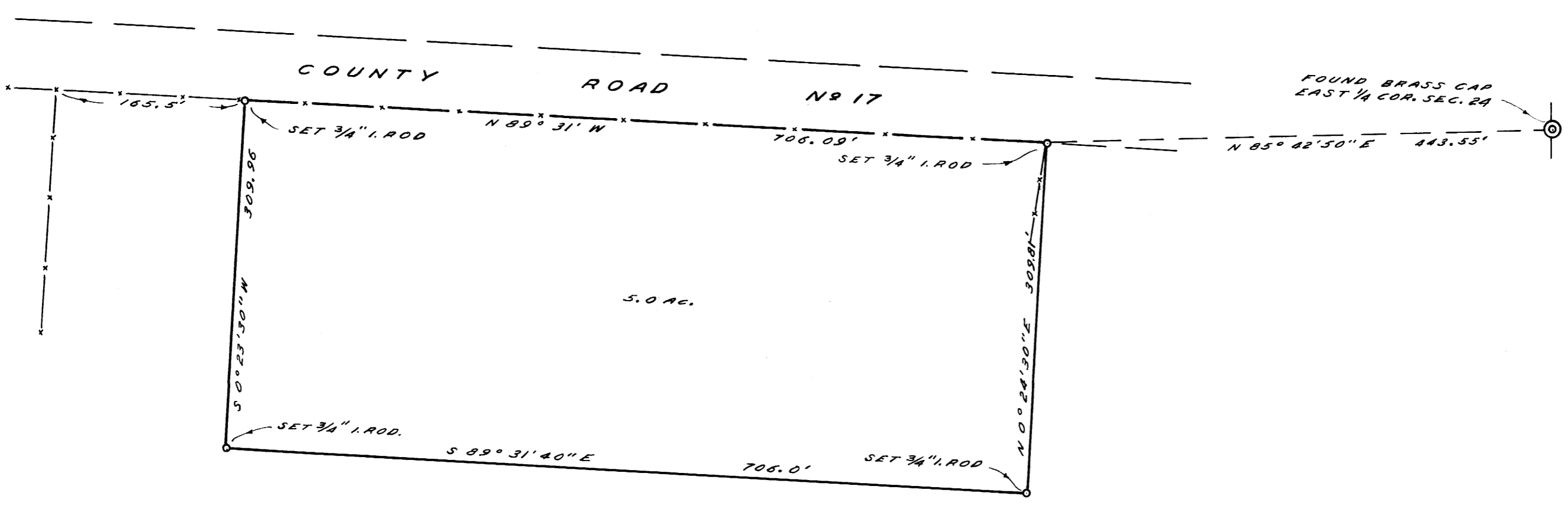


21-81 W
4/25 2712 S 2



NOTE: BEARINGS BASED ON N 89° 31' W
AS PER C.S. FILE 45/150

COUNTY SURVEYOR'S OFFICE
DOUGLAS COUNTY, OREGON

SURVEY FOR DEED DESCRIPTION,
SECTION 24, T.27S., R.5W., W.M.

FRED M. DARBY COUNTY SURVEYOR
SURVEYED DEC 29, 1959 BY
JAMES W. BYRON - DEPUTY SCALE 1" = 100'
SURVEYED FOR CARL HILL

James W. Byron
[Signature]

COUNTY SURVEYORS FILE DATA
DO NOT REMOVE FROM OFFICE