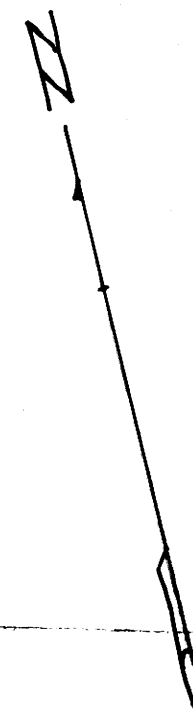


C.S. 42/43
M 16-7

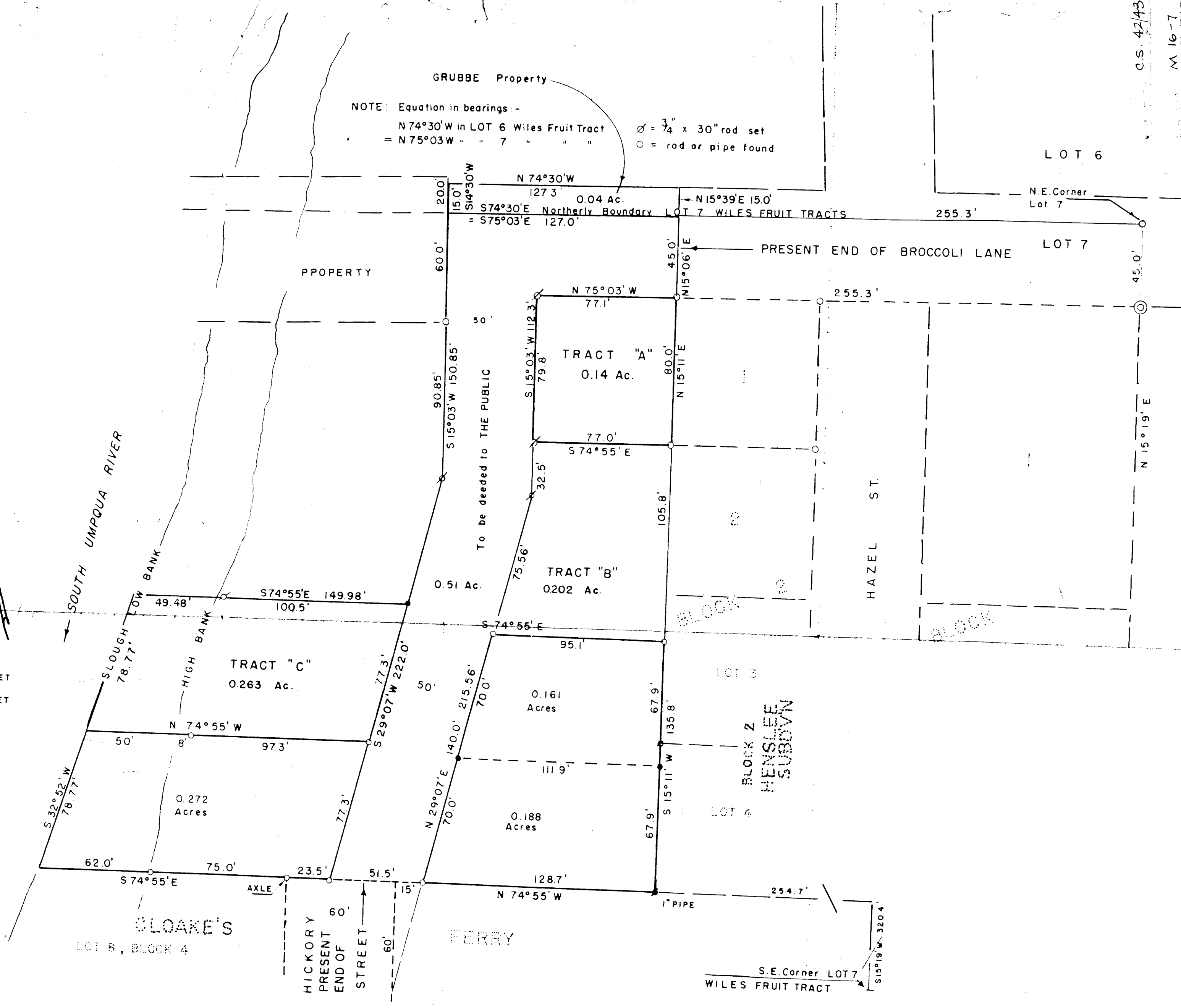
C.S. 42/43
M 16-7

NOTE: Equation in bearings:-
N 74°30'W in LOT 6 Wiles Fruit Tract = N 75°03'W " " " "
Ø = 3/4" x 30" rod set
○ = rod or pipe found



○ = 5/8" ROD SET
● = 1/2" ROD SET

Ferry C. Armstrong



PLAT OF PART OF
J.B. HENSLEE PROPERTY
in Lot 7 of Wiles Fruit Tract, Roseburg, Ore.
Sec 15 - T 27 S - R 6 W W.M.

REVISED FEB. 1952 SCALE 1" = 40'
FEB 1955 to show proposed street
Revised Apr. 1955 to include TRACTS "B", "C" and street traverse

FILED
RECEIVED
DEC 30 1955
COUNTY SURVEYOR

COUNTY SURVEYORS FILE DATA
DO NOT REMOVE FROM OFFICE

C.S. File 42/43

M16-7

THIS COPY MADE FROM
A XEROX 2510
DATE 6-7-89

C.S. 42/43
M16-7