

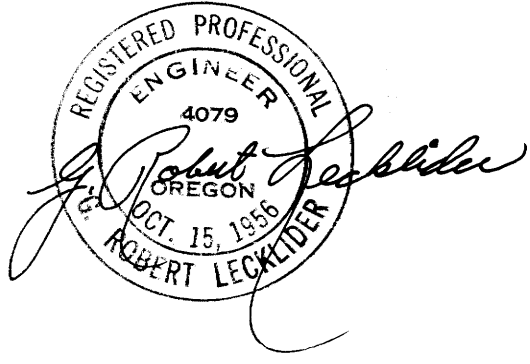
COUNTY SURVEYORS FILE DATA
DO NOT REMOVE FROM OFFICE

**SURVEY FOR DEED DESCRIPTION
SECTION 22, T27S, R6W, W.M.**

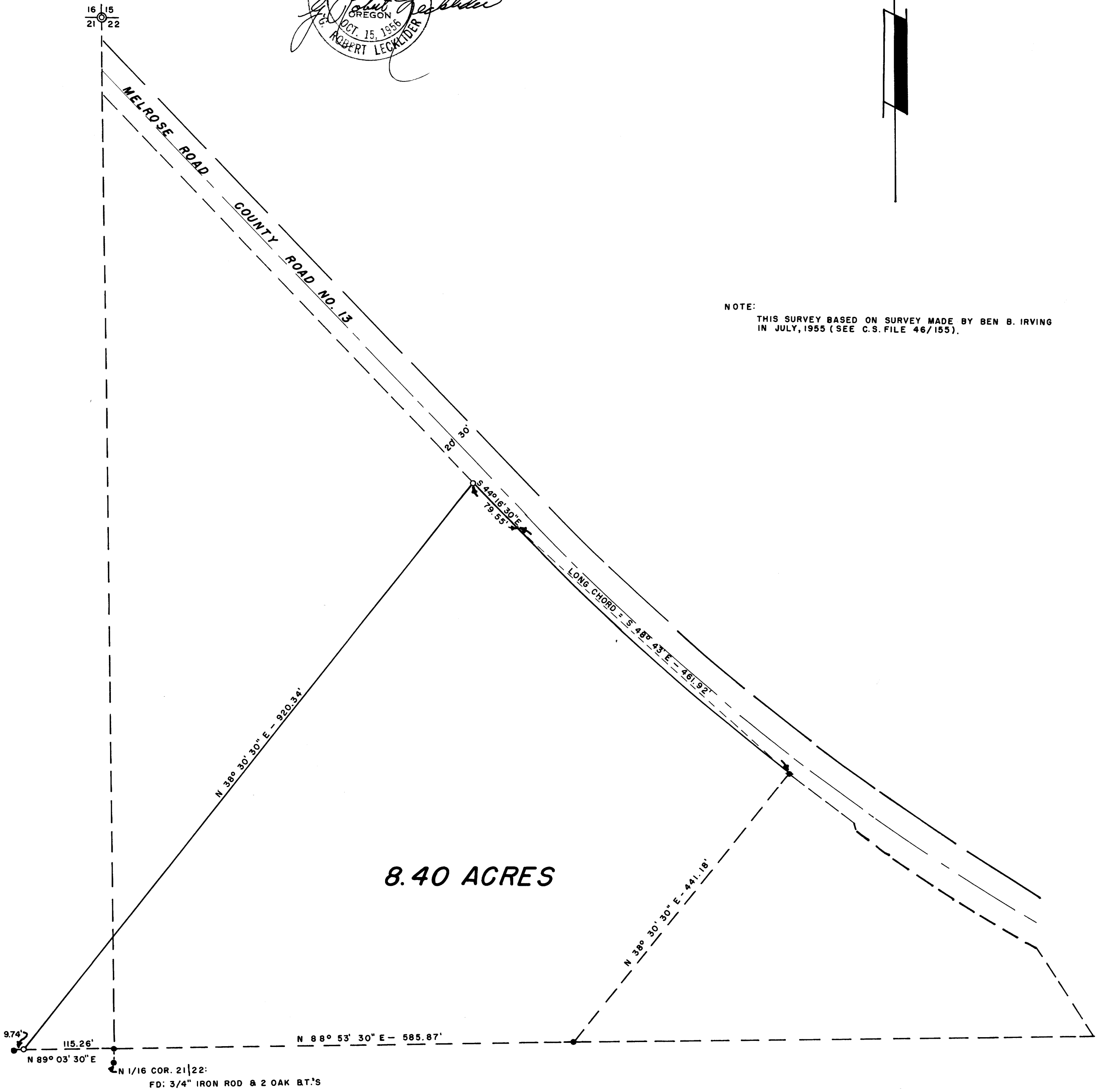
SURVEYED FOR: JAMES B. KILKENNY
SURVEYED BY: G. R. LECKLIDER-ENG'R.

DECEMBER, 1959
SCALE: 1" = 100'

• DENOTES CORNERS FOUND
○ DENOTES CORNERS SET (Steel tube with survey cap)



NOTE: THIS SURVEY BASED ON SURVEY MADE BY BEN B. IRVING
IN JULY, 1955 (SEE C.S. FILE 46/155).



FILED *LL*
RECEIVED

JAN 8 1960

COUNTY SURVEYOR
DOUGLAS COUNTY, ORE.