

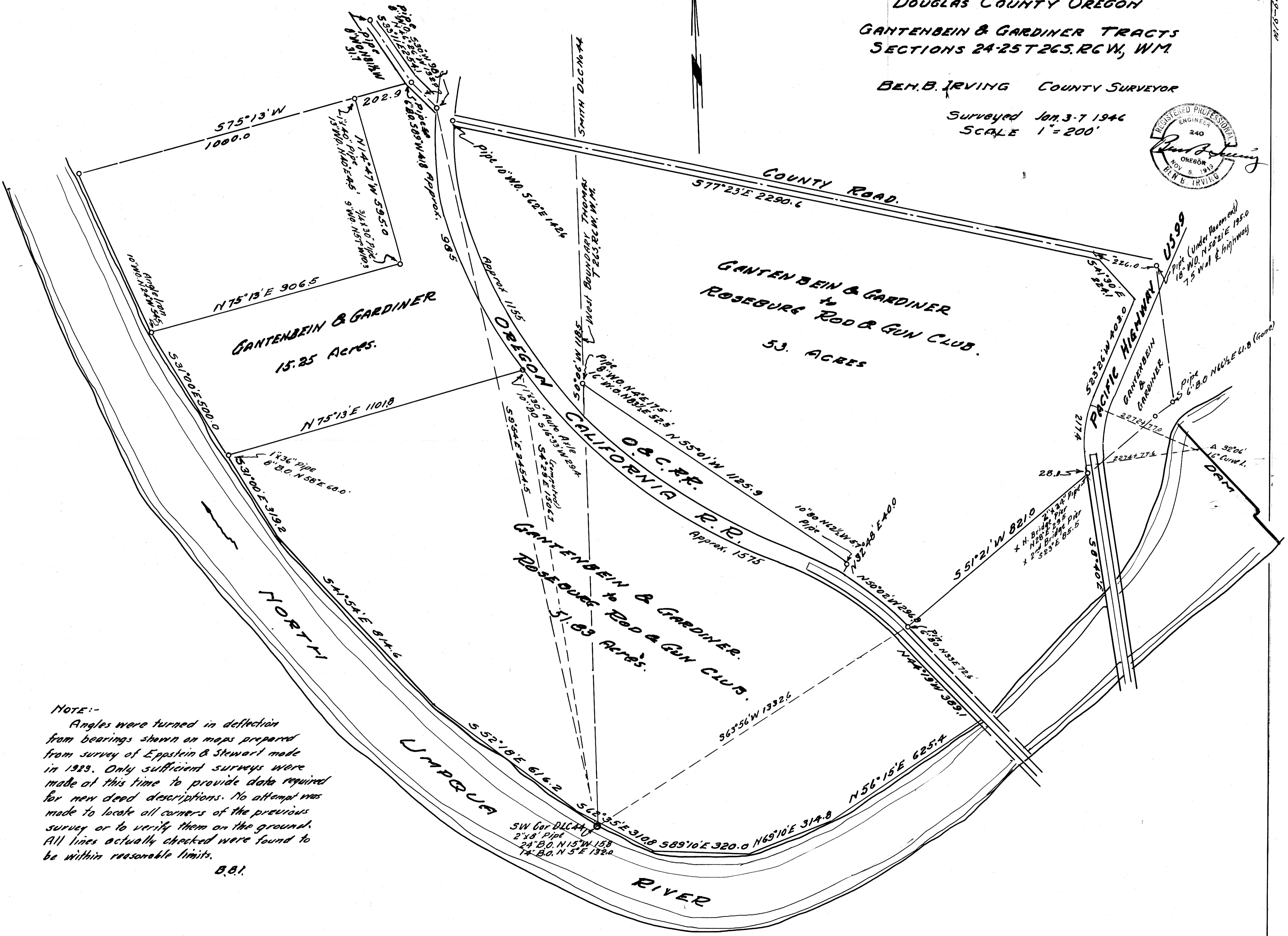
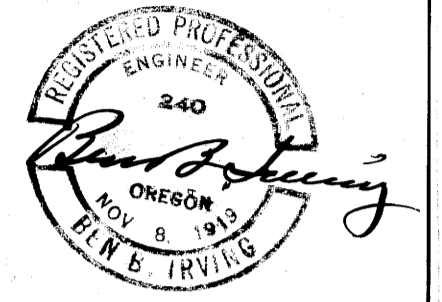
COUNTY SURVEYORS FILE DATA  
DO NOT REMOVE FROM OFFICE

COUNTY SURVEYOR'S OFFICE  
DOUGLAS COUNTY OREGON

GANTENBEIN & GARDINER TRACTS  
SECTIONS 24-25 T26S. R6W, WM

BEN. B. IRVING COUNTY SURVEYOR

Surveyed Jan. 3-7 1946  
SCALE 1" = 200'



NOTE:-  
Angles were turned in deflection from bearings shown on maps prepared from survey of Eppstein & Stewart made in 1929. Only sufficient surveys were made at this time to provide data required for new deed descriptions. No attempt was made to locate all corners of the previous survey or to verify them on the ground. All lines actually checked were found to be within reasonable limits.

B.B.I.