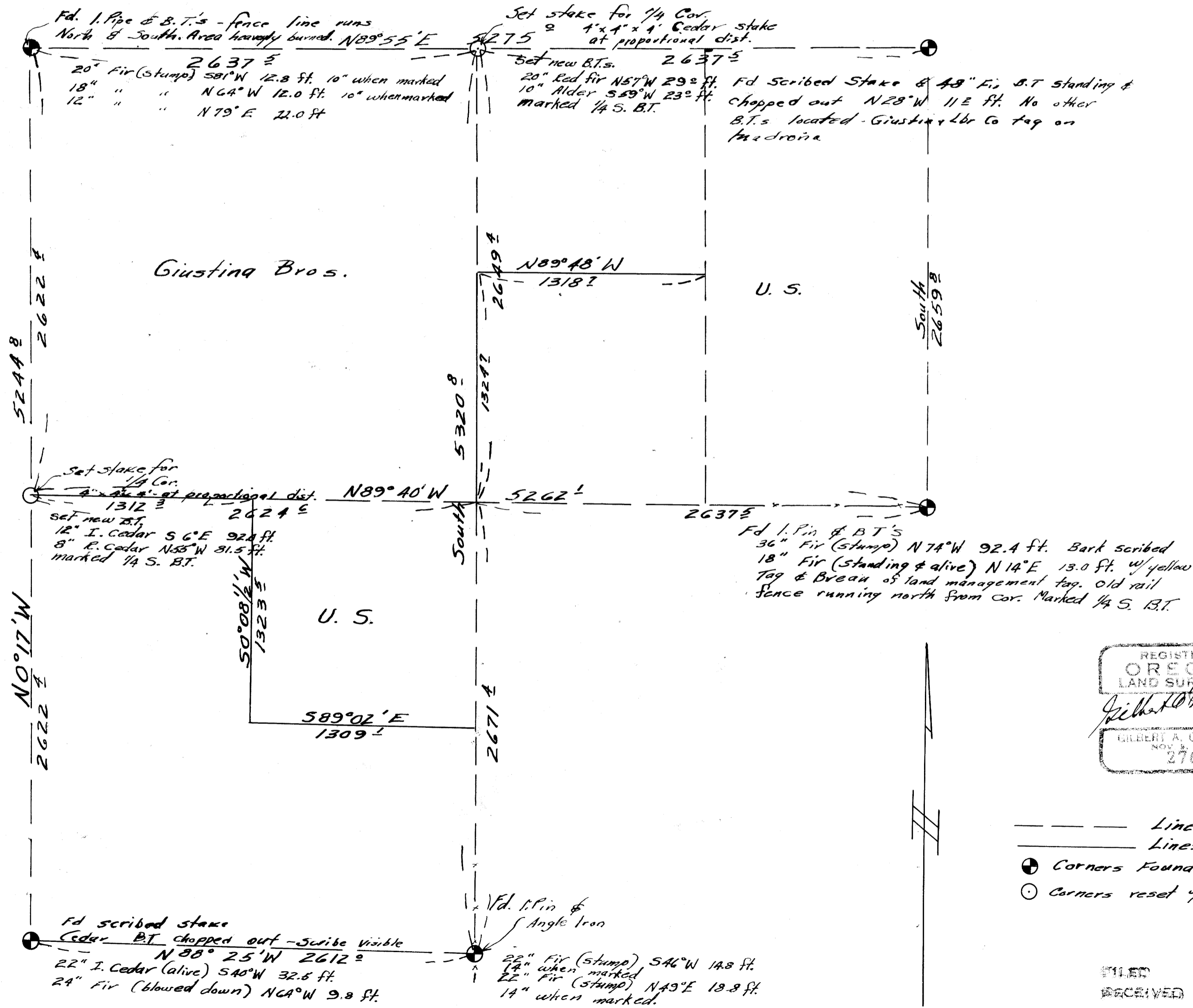


SURVEY for ANLAUF LUMBER CO. IN

Section 27 ; Twp. 21 S. ; Range 5 W.W.M.
Scale: 1" = 500.0' November 1955

C.S. File 42/134
Map File M/16-6



REGISTERED
OREGON
LAND SURVEYOR
Gilbert A. Gardner
GILBERT A. GARDNER
NOV. 2, 1951
276

- — — Lines surveyed
- — — Lines marked
- Corners Found
- Corners reset w/ new B.T.'s

FILED
RECEIVED

JAN 4 1956
COUNTY SURVEYOR
BOULDER COUNTY, ORE.

Compass & Chain
Var. 20 1/2° E

M 16-6