

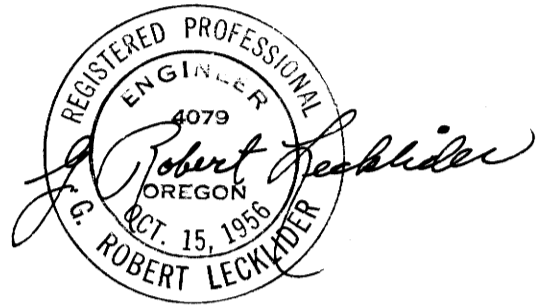
COUNTY SURVEYORS FILE DATA  
DO NOT REMOVE FROM OFFICE

# SURVEY OF SECTION 32, T 27 S, R 3 W, W.M.

SURVEYED FOR: WILBUR LUMBER CO.  
SURVEYED BY: G. R. LECKLIDER — ENG'R.

NOVEMBER, 1959  
SCALE: 1" = 500'

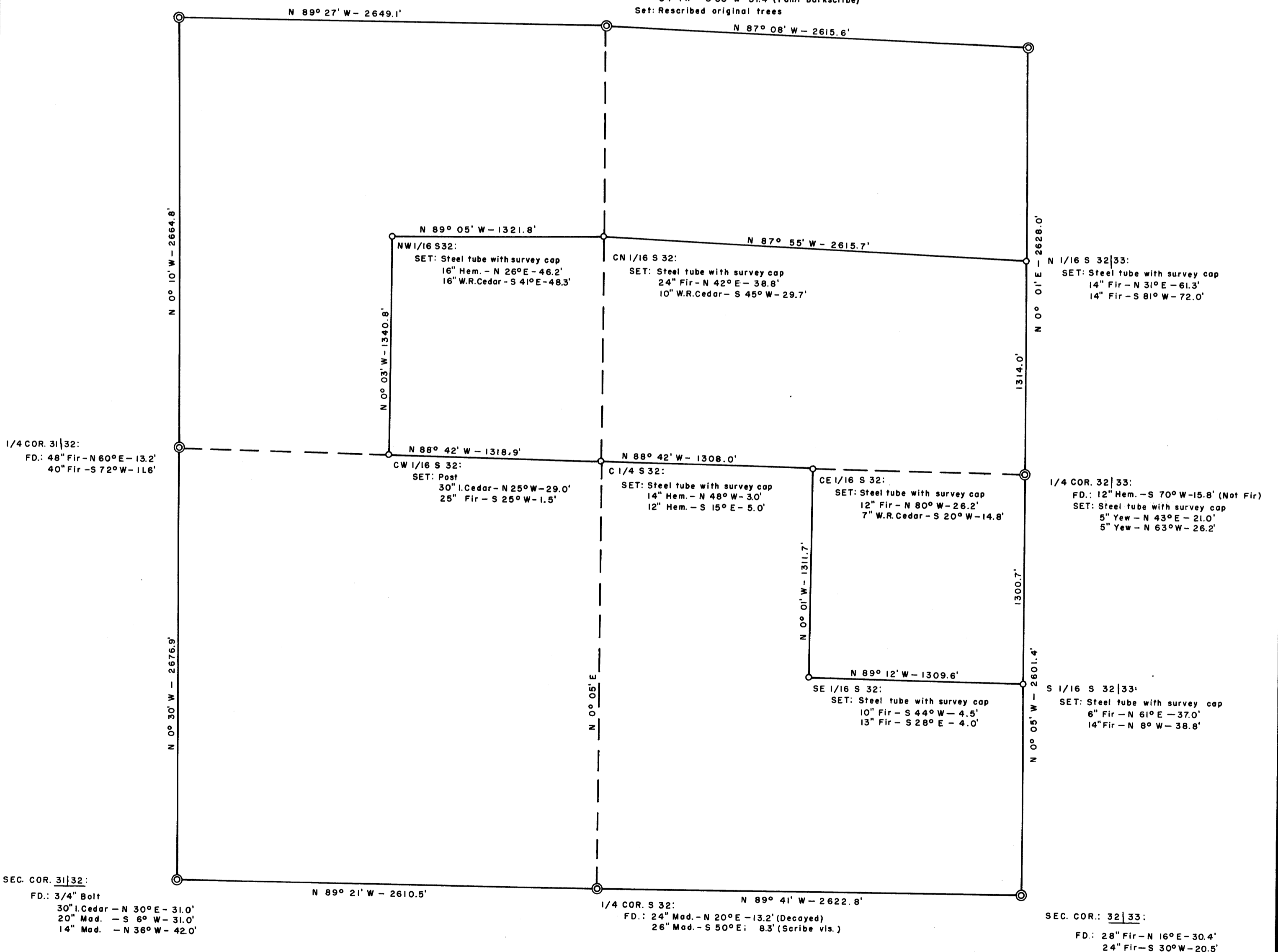
NOTE: ALL BEARINGS BASED ON SOLAR OBSERVATION



SEC. COR. 29, 30, 31, 32:  
 FD: 72" Fir - S 35° E - 28.4' (Barkscribe not vis.)  
 14" Hem. - N 8° E - 13.2' (Down-Rotten-scribe vis.)  
 12" Hem. - N 20° W - 15.8' (Down-Rotten-axe marks vis.)  
 SET:  
 6" Hem. - N 37° E - 19.2'  
 14" W.R.Cedar - N 26° W - 36.1'  
 16" Hem. - S 34° W - 52.1'  
 12" Hem. - S 7° E - 57.9'

SEC. COR. 28, 29, 32, 33:  
 FD: 60" Sugar Pine - S 55° W - 59.4' (Faint barkscribe)  
 SET: 3/4" Iron rod  
 Rescribed original Sugar Pine B.T.  
 18" Mad. - N 15° E - 23.9'  
 44" Fir - N 40° W - 40.8'  
 28" Mad. - S 12° E - 56.4'

1/4 COR. 29/32:  
 FD: 48" Fir - N 10° E - 37.6' (Faint barkscribe)  
 34" Fir - S 80° W - 57.4' (Faint barkscribe)  
 Set: Rescribed original trees



FILED  
RECEIVED

DEC 8 1959

COUNTY SURVEYOR  
DOUGLAS COUNTY, ORE.