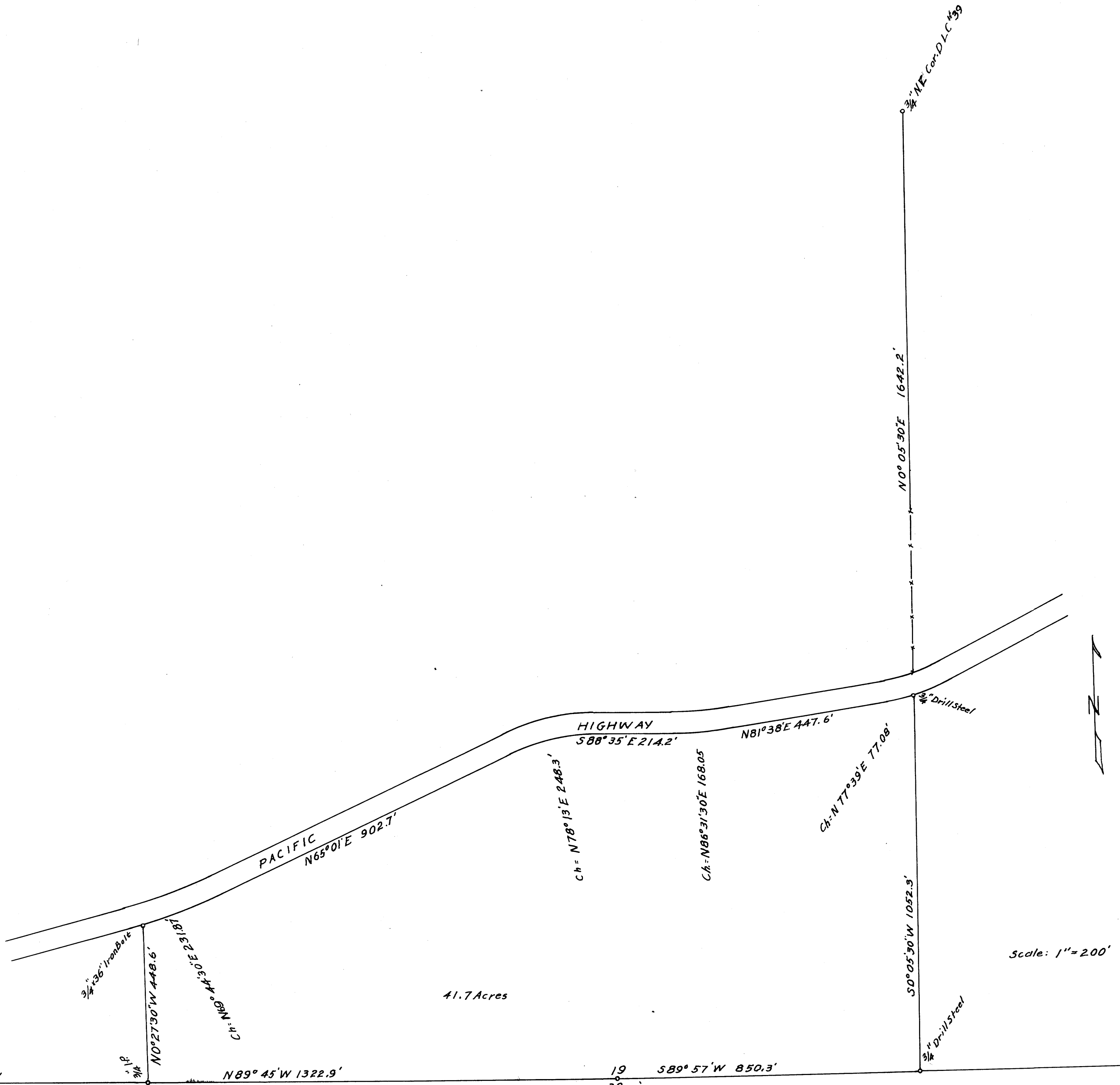


M 16-55

7.325 R6W W.M.  
7.325 R5W W.M.  
24 19  
25 30

M 16-55



REGISTERED  
 OREGON  
 LAND SURVEYOR  
*George P. Miller*  
 COUNTY SURVEYOR  
 DOUGLAS COUNTY, ORE.

FILED  
 RECEIVED  
 DEC 12 1947  
 COUNTY SURVEYOR  
 DOUGLAS COUNTY, ORE.

COUNTY SURVEYORS FILE DATA  
 DO NOT REMOVE FROM OFFICE

Survey for Amy E. Gray, Section 19, T. 32 S . R. 5r., W.M.

Dec. 1947

I ran N 0°27' 30" W from the S W Corner of the SE 1/4 of the SW 1/4 of Section 19, which point I had established previously on a survey for J.B. Moore, to the southerly right of way line of the Pacific Highway a distance of 448.6 feet at which point I set a 3/4" x 36" iron bolt 30" into the ground I then traversed the centerline of said Highway easterly to its intersection with the fence line at the East side of the Amy E. Gray property. I then located the N E Corner of DLC #39 which I found marked by a 3/4" iron pipe from which 3 bearing trees as per notes. I produced the line from this DLC corner thru the fence corner at the highway on the south to its intersection with the South line of Section 19. As I could find no trace of the SE CORNER of DLC #39 and the line I had run south from the NE corner followed evidence of a fence line from the Highway south to the section line and buildings and other evidence showed this to be the accepted property line I used it as such. I started at the South 1/4 corner of Sec. 19 and on the lines established ran N 89°57' E a distance of 850.3 feet and set a 3/4" x 30" Drill Steel 24" into the ground then N 0° 05'30" W a distance of 1052.3 feet to a point on the Southerly right of way line of said Highway at which I set a 3/4" x 30" Drill steel 24" into the ground. I then calculated my distance along the southerly right of way line to complete the description of the parcel as shown on the accompanying sketch.

RECEIVED  
OFFICE OF  
LAND SURVEYOR

*George C. Baker*

DEC 11 1947  
George C. Baker  
77

FILED

~~RECEIVED~~

DEC 24 1947

COUNTY SURVEYOR  
DOUGLAS COUNTY, ORE.

~~FILED~~

RECEIVED

DEC 12 1947

COUNTY SURVEYOR  
DOUGLAS COUNTY, ORE.