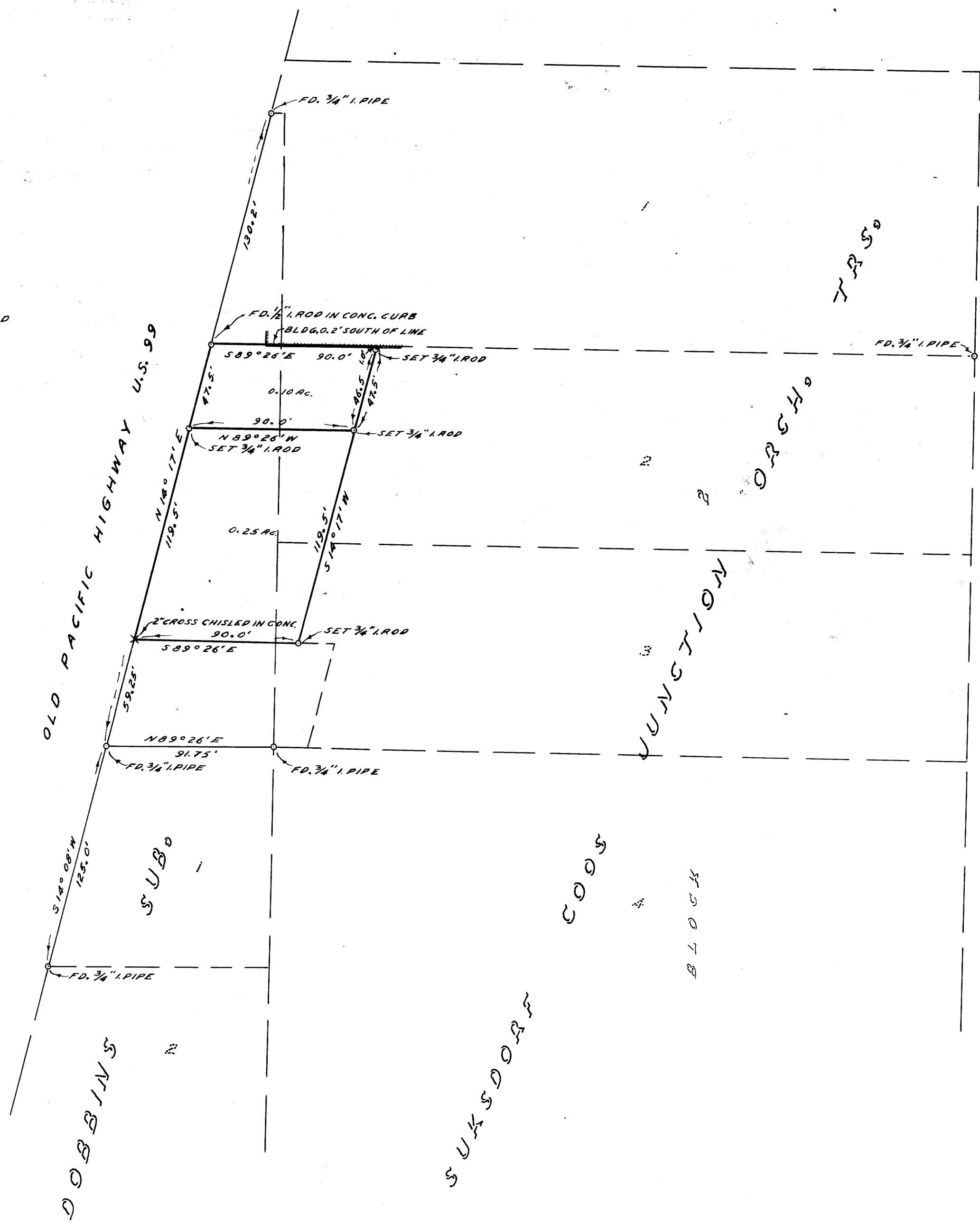


NOTE: BEARINGS BASED ON N 14° 17' E, PER DEED



COUNTY SURVEYOR'S OFFICE
DOUGLAS COUNTY, OREGON

SURVEY FOR DEED DESCRIPTION,
SECTION 21, T28S., R.6 W., W.M.

REGISTERED
OREGON
LAND SURVEYOR
James W. Byron
JAMES W. BYRON
303

FRED M. DARBY COUNTY SURVEYOR
SURVEYED NOV. 9, 1959 BY
JAMES W. BYRON - DEPUTY SCALE 1" = 50'
SURVEYED FOR J. V. TABER

COUNTY SURVEYORS FILE DATA
DO NOT REMOVE FROM OFFICE

CS FILE FOLDER

CONTAINS

MORE

INFORMATION