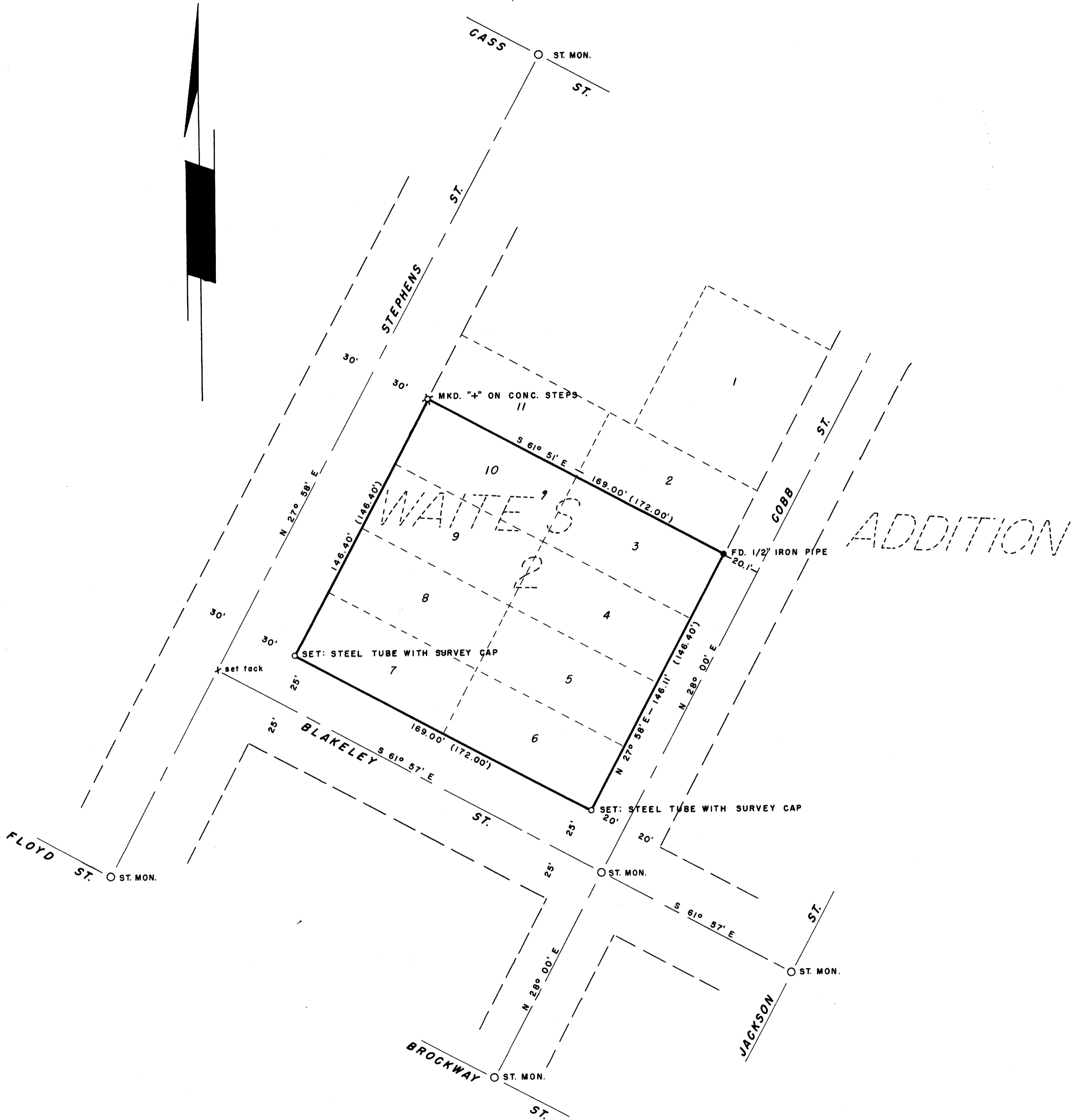


COUNTY SURVEYORS FILE DATA
DO NOT REMOVE FROM OFFICE

**SURVEY TO ESTABLISH PROPERTY CORNERS OF
LOTS 3, 4, 5, 6, 7, 8, 9, & 10, BLOCK 2, WAITE'S ADDITION
SECTION 24, T 27 S, R 6 W, DOUGLAS COUNTY, OREGON**

SURVEYED FOR: SHELL OIL COMPANY
SURVEYED BY: G. R. LECKLIDER - ENGINEER

NOVEMBER, 1959
SCALE: 1" = 40'



NOTE: DISTANCES IN PARENTHESIS ARE RECORD DISTANCES.



FILED
RECEIVED

NOV 9 1959

COUNTY SURVEYOR
DOUGLAS COUNTY, ORE.