

BLOCK 21

BLOCK 20

BLOCK 19

St. Mon.
E. 2nd St. and
Commer- cial Ave.

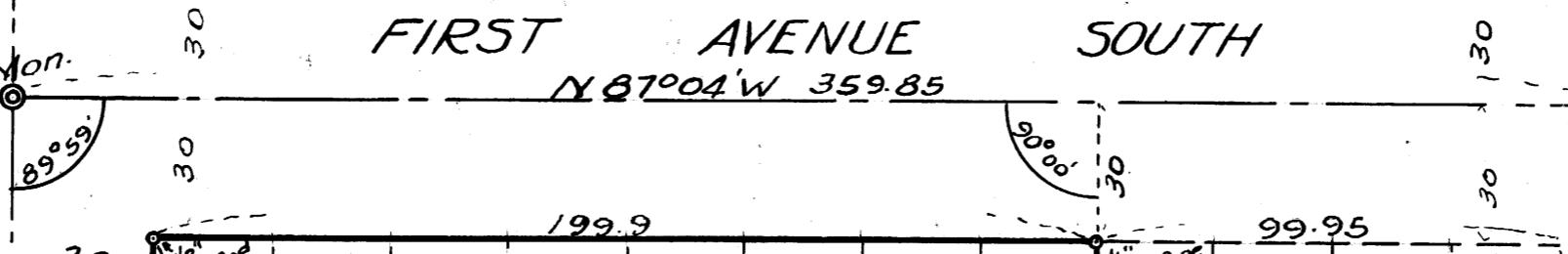
St. Mon.
E. 3rd St. and
Commer- cial Ave.

St. Mon.

St. Mon.

FIRST AVENUE SOUTH

N 87°04' W 359.85



EAST SECOND STREET SOUTH

EAST THIRD STREET SOUTH

BLOCK RAILROAD ALLEY

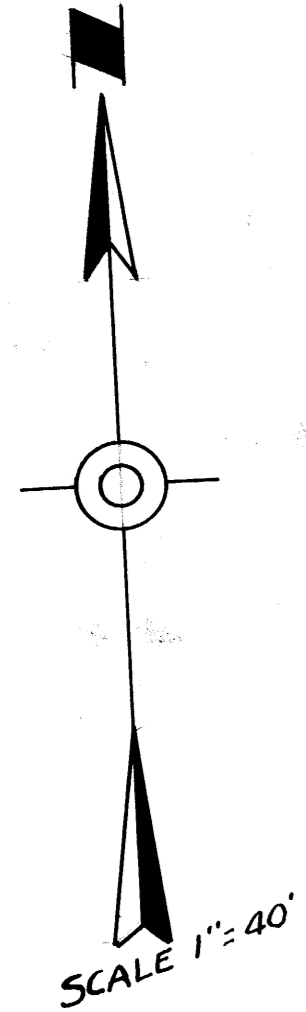
**OFFICE OF THE COUNTY SURVEYOR
DOUGLAS COUNTY OREGON
SURVEY OF PART OF LOTS 5-12, BLK. 9
KINNEY'S IMPROVED PLAT, ROSEBURG.**

BEN B IRVING COUNTY SURVEYOR
SURVEYED, NOVEMBER 5, 1947. BY
N.E. RICHARDSON DEPUTY

REGISTERED
OREGON
LAND SURVEYOR

N.E. Richardson
JULY 7, 1944
N. E. RICHARDSON
35

COUNTY SURVEYORS FILE DATA
DO NOT REMOVE FROM OFFICE



BLOCK 10