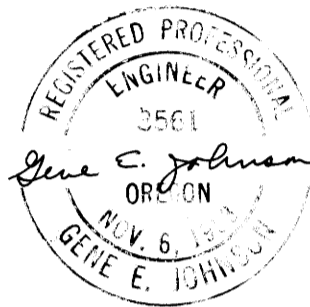


COUNTY SURVEYORS FILE DATA
DO NOT REMOVE FROM OFFICE

SURVEY FOR DEED DESCRIPTION
SECTION 19, T. 27 S., R. 5 W., WILL. MER.
CITY OF ROSSBURG, DOUGLAS COUNTY, OREGON
FOR
H. C. MEAD

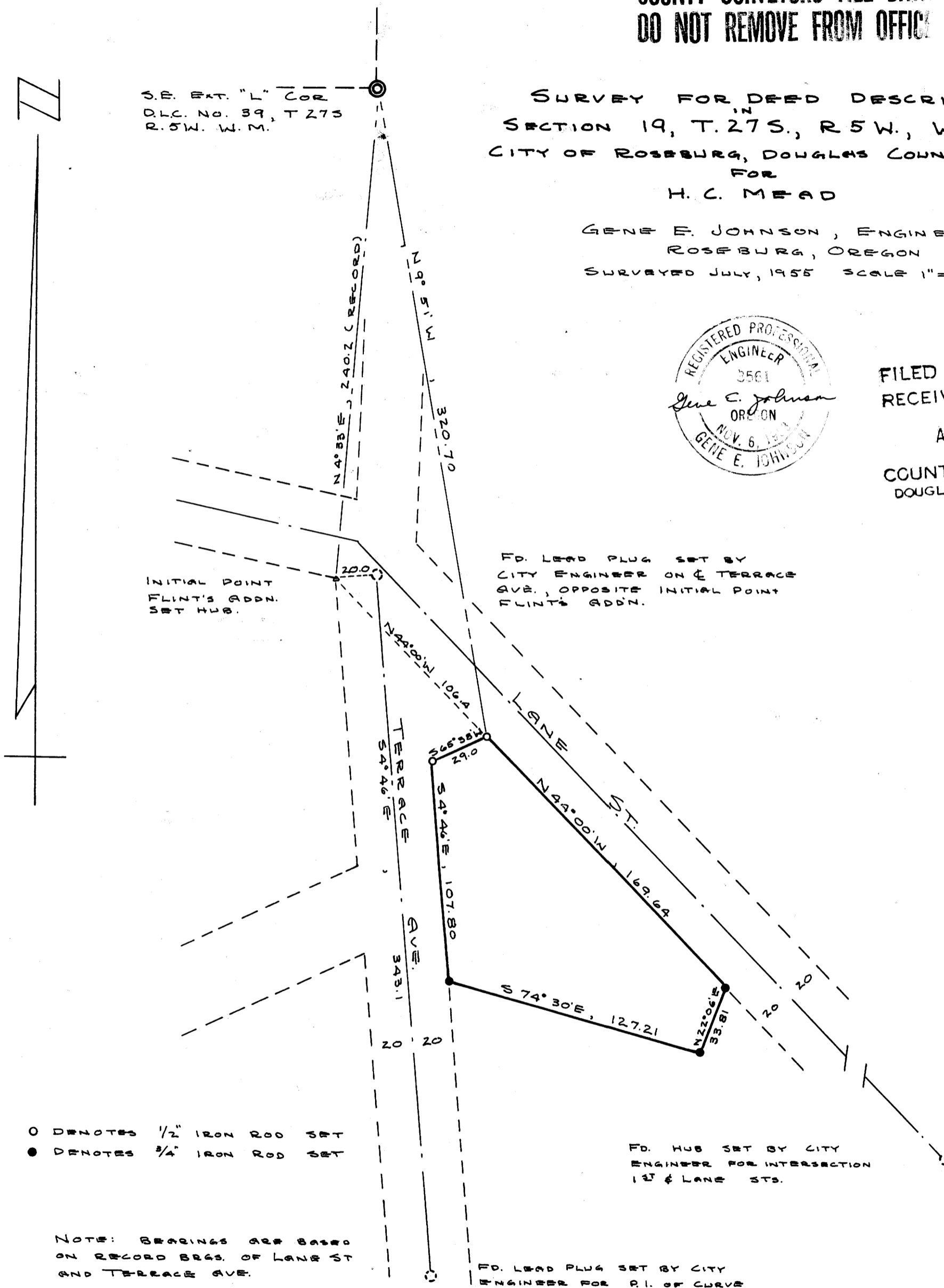
GENE E. JOHNSON, ENGINEER
ROSSBURG, OREGON
SURVEYED JULY, 1955 SCALE 1" = 50'



FILED
RECEIVED

AUG 2 1955

COUNTY SURVEYOR
DOUGLAS COUNTY, ORE.



S.E. EXT. "L" COR
D.L.C. NO. 39, T 27 S
R. 5 W. W. M.

INITIAL POINT
FLINT'S ADDN.
SET HUB.

T.D. LEAD PLUS SET BY
CITY ENGINEER ON E. TERRACE
AVE., OPPOSITE INITIAL POINT
FLINT'S ADDN.

F.D. HUB SET BY CITY
ENGINEER FOR INTERSECTION
1ST & LANE STS.

- DENOTES 1/2" IRON ROD SET
- DENOTES 3/4" IRON ROD SET

NOTE: BEARINGS ARE BASED
ON RECORD BRGS. OF LANE ST
ON TERRACE AVE.

T.D. LEAD PLUS SET BY CITY
ENGINEER FOR P.I. OF CURVE
ON TERRACE AVE.