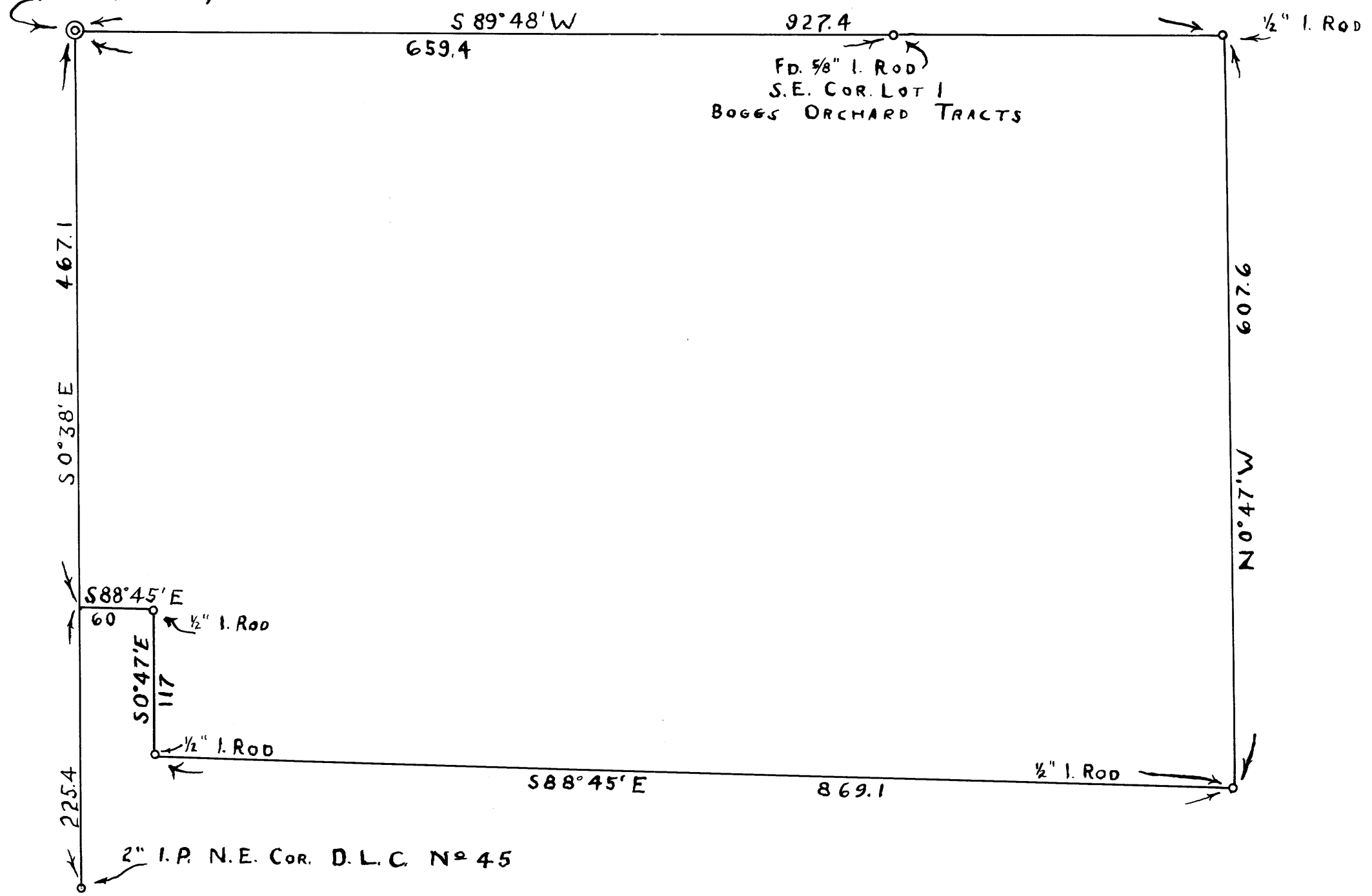
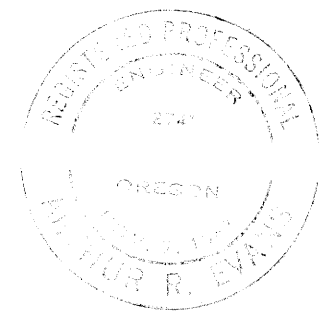


Fd. 1" I.P. - BRASS CAP
 N.W. COR. OF CHAS. W. SMITH
 D.L.C. N^o 43, T28S, R6W



SURVEY FOR DEED DESCRIPTION
 IN C.W. SMITH D.L.C. N^o 43, T28S, R6W, WM.

GRANT & EVANS, ENGINEERS
 ROSEBURG, OREGON
 SURVEYED OCTOBER 23, 1952
 SCALE 1" = 100'



COUNTY SURVEYORS FILE #
 DO NOT REMOVE FROM OFFICE

S. File C.S. 41/92
 M 16 - 30

M 16 - 30
 41/92