

N.W. Coy.
 Sect. 4, T23S., R.5 W.
 Found
 36" fir stump of BT
 S58°E. 50-1K5.
 Drive 1" x 1" x 12" T. iron into ground
 next to bank of a road.

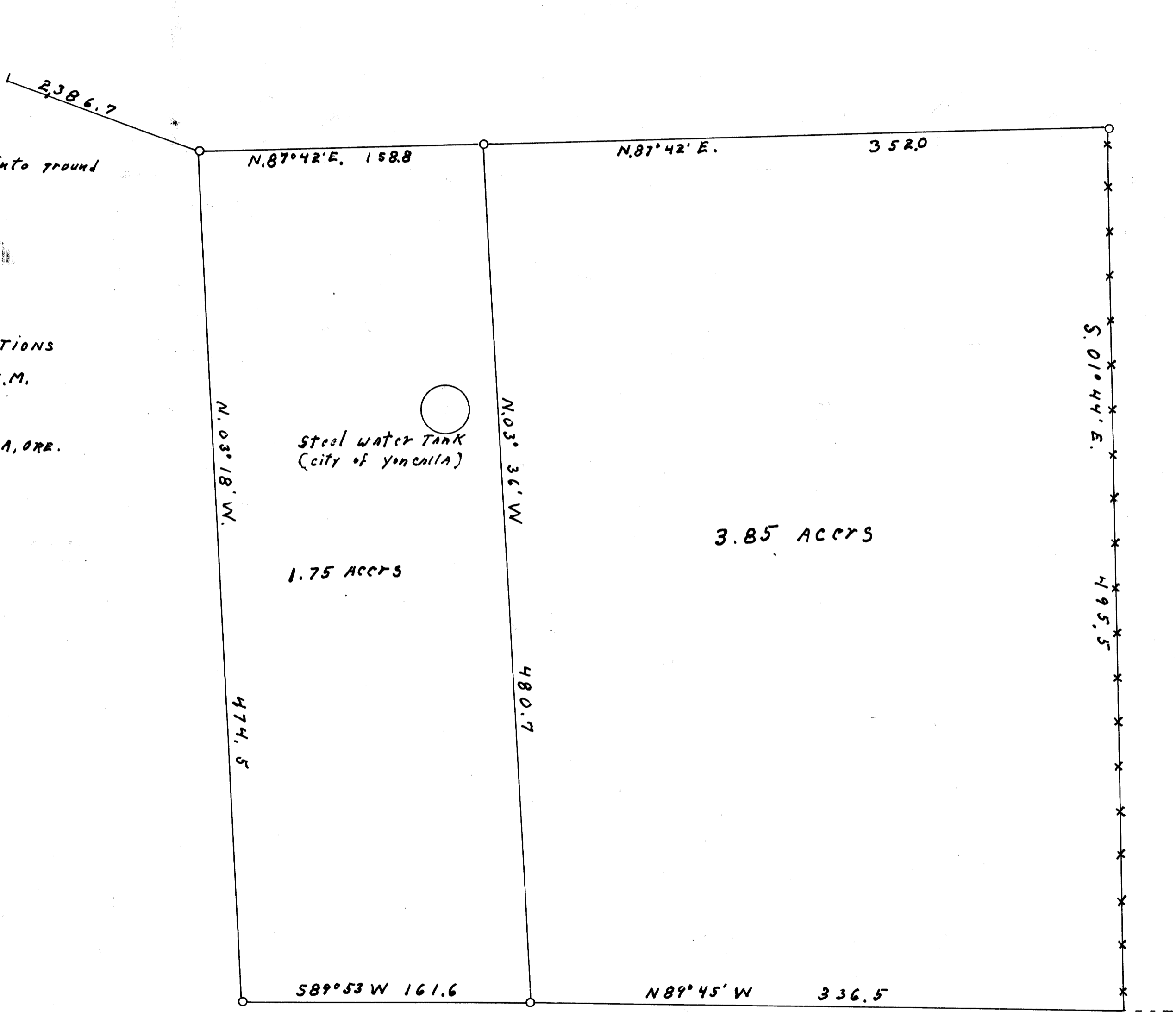
DO NOT REMOVE FROM SITE

SURVEY FOR DEED DESCRIPTIONS
 SECTION 4, T23S., R.5 W., W.M.
 For
 STEWART MATHIS YONCALLA, ORE.



1" x 1" x 36" T. irons

FILED
 RECEIVED
 OCT 2 1959
 COUNTY SURVEYOR
 DOUGLAS COUNTY, ORE.



ROAD
 Block Two Deeds add.
 to Yoncalla.

MAP FILE M1673