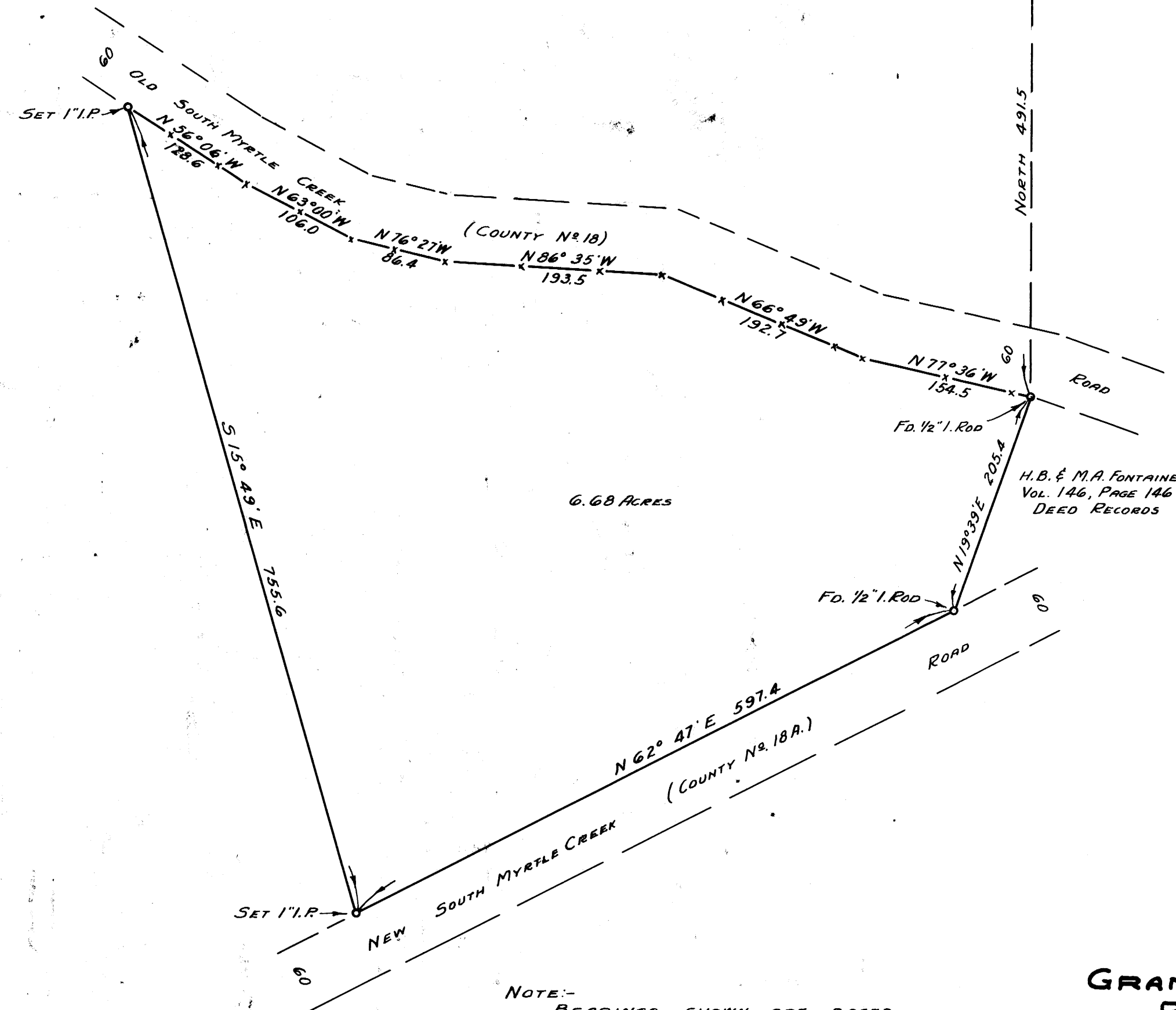


N.W. COR. - ALPHEUS  
IRELAND D.L.C. No. 472

West 3079.1

NORTH 491.5

SCALE 1" = 100'



6.68 ACRES

H.B. & M.A. FONTAINE  
VOL. 146, PAGE 146  
DEED RECORDS

NOTE:-  
BEARINGS SHOWN ARE BASED  
ON THE BEARING OF THE WEST LINE  
OF THE FONTAINE PARCEL RECORDED  
AS SHOWN ABOVE.:- N 19° 39' E

GRANT & EVANS, ENGINEERS  
ROSEBURG, OREGON  
SURVEY FOR DEED DESCRIPTION  
IN ALPHEUS IRELAND D.L.C. No. 47,  
T 29S, R 5W, W.M.

SURVEYED & PLATTED, Nov. 1951, BY  
A.R. EVANS, REG. PROF. ENGINEER.



COUNTY SURVEYORS FILE IN  
DO NOT REMOVE FROM OFFICE