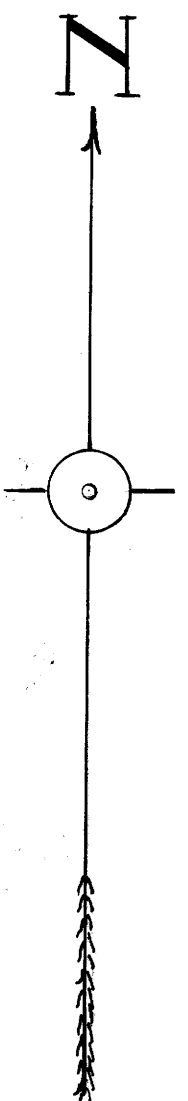
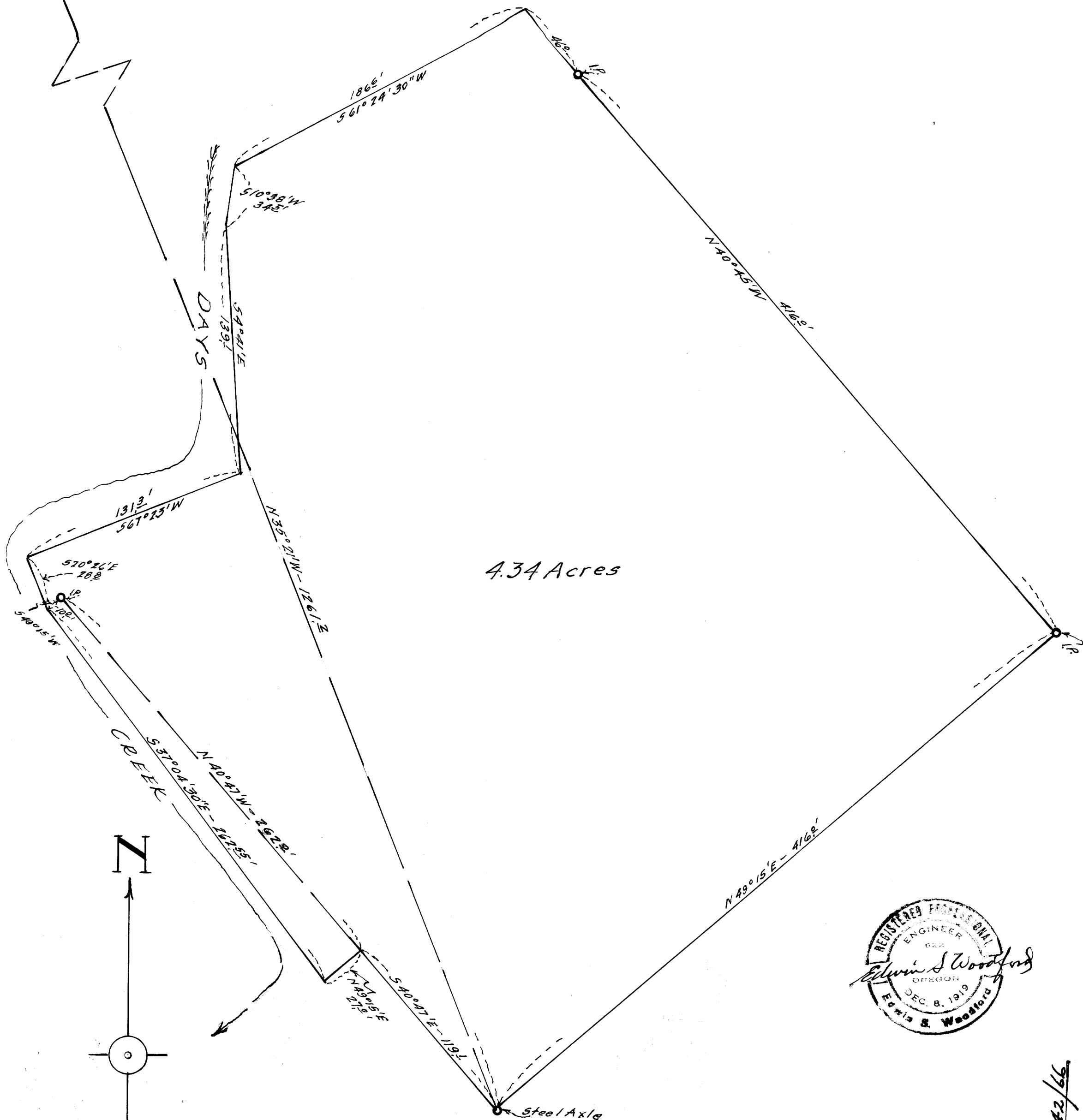


61-91 W

E.P.  
1/4 Cor. Sec 28 & 33  
Tp 29S R63W WM



COUNTY SURVEYORS FILE  
DO NOT REMOVE FROM FILE

MAP  
OF  
PORTION OF DANIEL PURDUE RANCH  
IN  
SECTION 33 TP 29S-R63W WM  
Scale-1"=50' January 1953.

FILED  
RECEIVED  
JAN 10 1956  
COUNTY SURVEYOR  
DOUGLAS COUNTY, ORE.

MAP FILE M16r19

C.S. File No. 42/66

JWB