

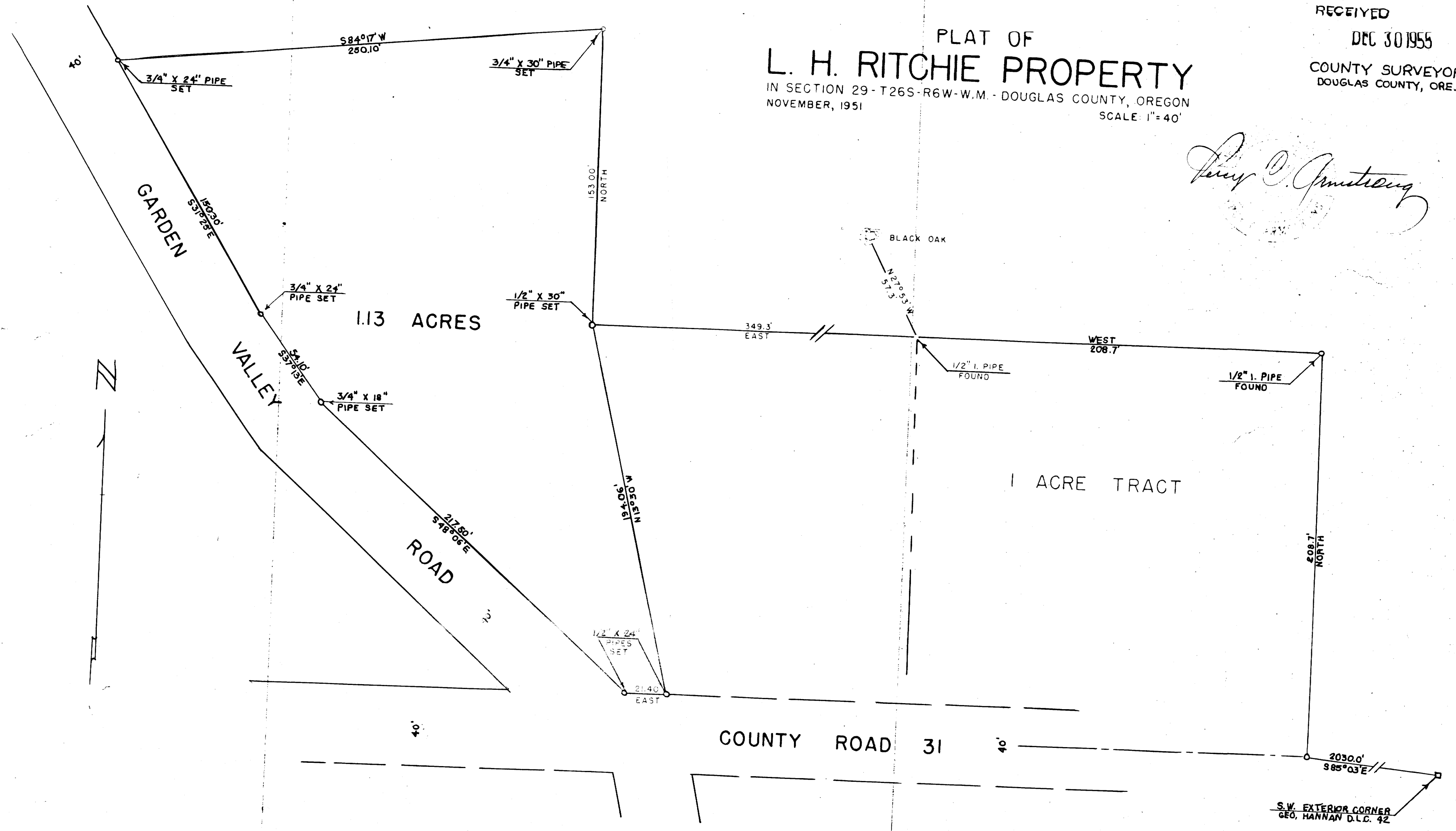
COUNTY SURVEYORS FILE
DO NOT REMOVE FROM OFFICE

FILED
RECEIVED
DEC 30 1955
COUNTY SURVEYOR
DOUGLAS COUNTY, ORE.

C.S. 42/51
M 16-15
THIS COPY MADE FROM
A XEROX 2510
DATE 6-7-89

PLAT OF
L. H. RITCHIE PROPERTY
IN SECTION 29-T26S-R6W-W.M. - DOUGLAS COUNTY, OREGON
NOVEMBER, 1951
SCALE: 1"=40'

Henry O. Armstrong



C.S. 42/51
M 16-15

42/51