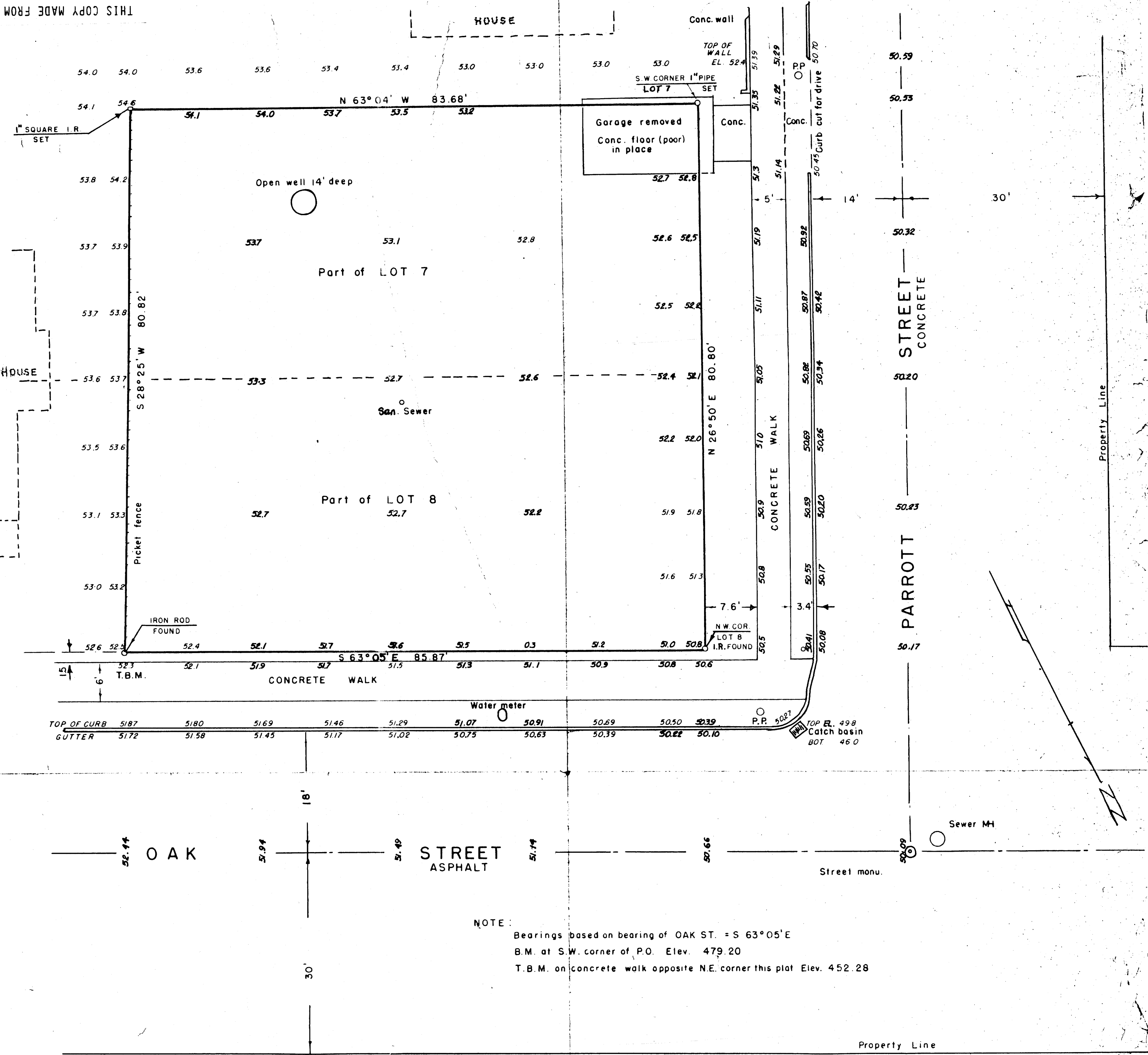


CS 42/50
M 16-14

THIS COPY MADE FROM
A XEROX 2510
DATE 6-9-89
C.S. 42/50
M 16-14



NOTE:
 Bearings based on bearing of OAK ST. = S 63° 05' E
 B.M. at S.W. corner of P.O. Elev. 479.20
 T.B.M. on concrete walk opposite N.E. corner this plat Elev. 452.28

PLAT OF
PART OF LOTS 7 & 8
 RAILROAD ADDITION TO CITY OF ROSEBURG
 DOUGLAS COUNTY, OREGON
 March 1952 Scale 1" = 10'

Ray C. Armstrong

**COUNTY SURVEYORS FILE
 DO NOT REMOVE FROM FILE**

FILED
 RECEIVED
 DEC 30 1955
 COUNTY SURVEYOR
 DOUGLAS COUNTY, ORE.

C.S. File 42/50

C.S. 42/50
 M 16-14