

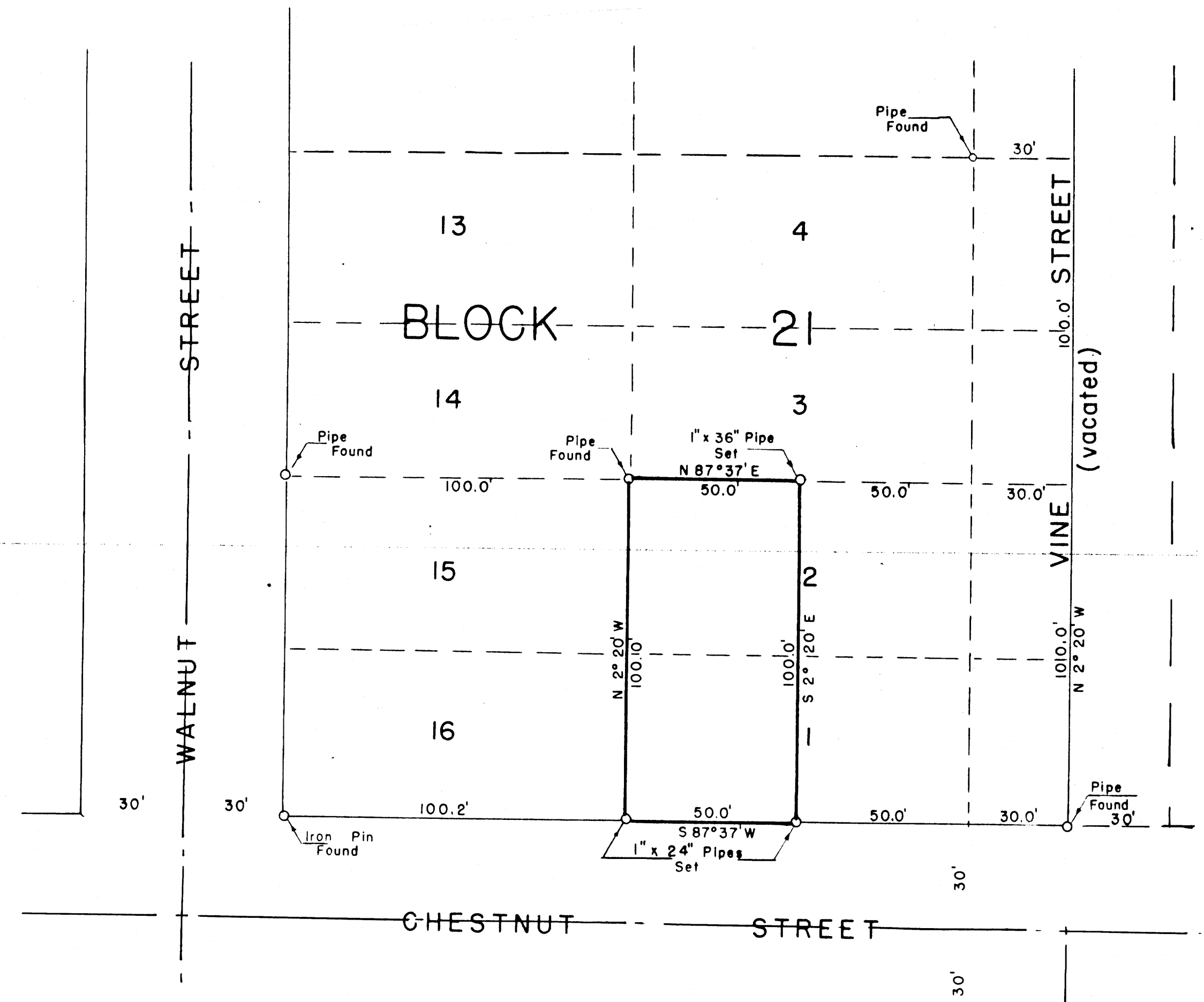
M16-13  
C.S. 42/49

FILED  
RECEIVED

DEC 30 1955

COUNTY SURVEYOR  
DOUGLAS COUNTY, ORE.

THIS COPY MADE FROM  
A XEROX 2510  
DATE 6-7-89



PLAT OF  
**JESSIE L. JONES PROPERTY**  
 BEING  
 WEST 1/2 LOTS 1 & 2, BLOCK 21, RIVERSIDE ADDITION, ROSEBURG, OREGON  
 JUNE, 1951  
 SCALE: 1" = 30'

*Ray C. Anthony*

C.S. 42/49

**COUNTY SURVEYORS FILE IN  
 DO NOT REMOVE FROM OFFICE**

M16-13