

COUNTY SURVEYORS FILE #
DO NOT REMOVE FROM OFFICE

THOMAS KERR TRACT

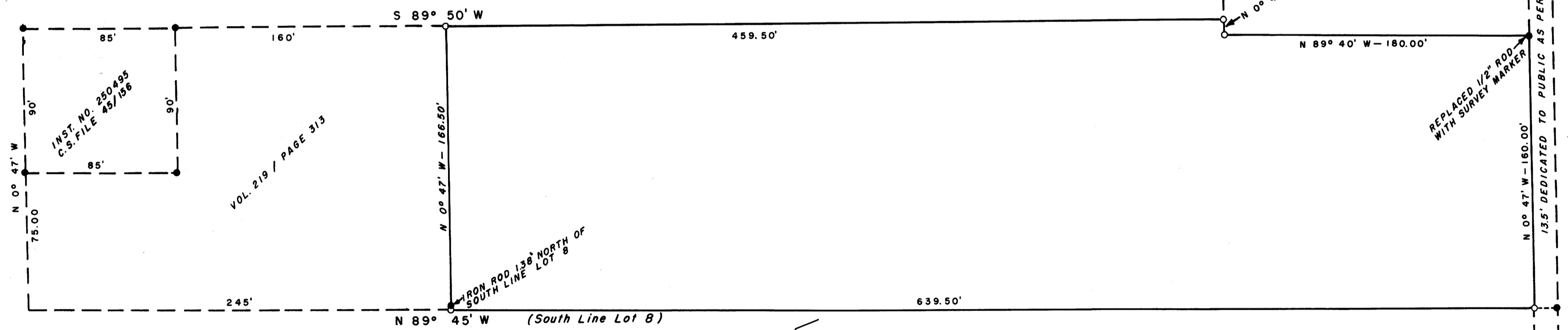
**SURVEY FOR DEED DESCRIPTION
IN LOT 8, FRUITVALE ADDITION
SECTION 12, T 27 S, R 6 W, W.M.**

SURVEYED FOR: CLARENCE & RAY DEADMOND OCTOBER, 1959
SURVEYED BY: G. R. LECKLIDER-ENGINEER SCALE: 1" = 50'

- DENOTES CORNERS FOUND
- DENOTES STEEL TUBE WITH CAP SET

NOTE: BEARINGS BASED ON WEST LINE OF VINE STREET

PACIFIC HIGHWAY U.S. 99



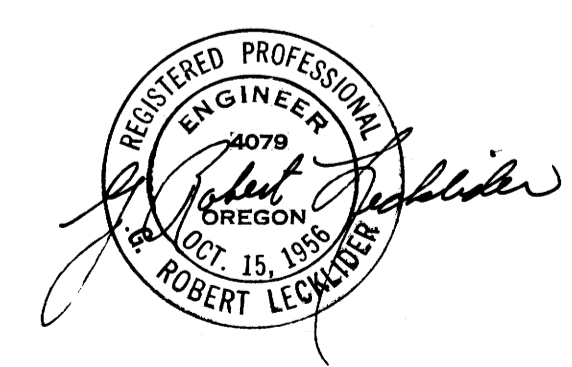
FRUITVALE
LOT 9

NEBO TRAILER COURT

ROSELAND TRACTS

VINE STREET

FILED & RECEIVED
OCT 10 1959
COUNTY SURVEYOR
DOUGLAS COUNTY, ORE.



MAP FILE M 15-7-69

MAP FILE M 15-69