

JUNIOR SURVEYORS FILE DATA  
DO NOT REMOVE FROM OFFICE

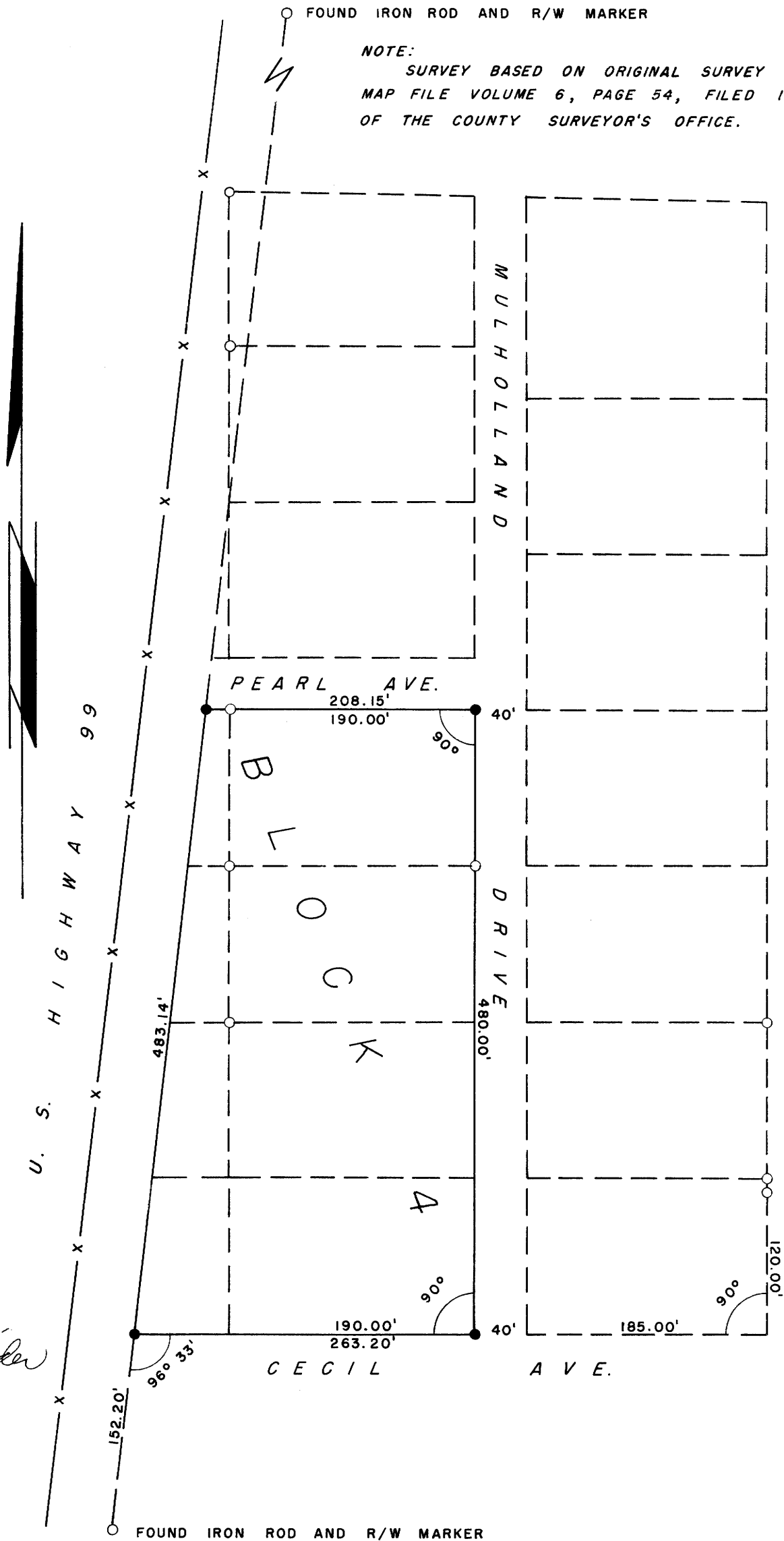
# SURVEY TO ESTABLISH PROPERTY CORNERS BLOCK 4, MULHOLLAND MEADOWS ROSEBURG, DOUGLAS CTY., OREG.

SURVEYED FOR: E. T. UNRATH                      AUGUST, 1959  
SURVEYED BY: G. R. LECKLIDER-ENGR.          SCALE: 1" = 100'

- DENOTES CORNER FOUND
- DENOTES STEEL TUBE WITH CAP SET

○ FOUND IRON ROD AND R/W MARKER

NOTE:  
SURVEY BASED ON ORIGINAL SURVEY AS FILED IN  
MAP FILE VOLUME 6, PAGE 54, FILED IN THE RECORDS  
OF THE COUNTY SURVEYOR'S OFFICE.



*G. Robert Lecklider*  
 REGISTERED PROFESSIONAL ENGINEER  
 STATE OF OREGON  
 No. 1234  
 G. R. LECKLIDER

FILED  
 RECEIVED  
 SEP 1 1959  
 COUNTY SURVEYOR  
 DOUGLAS COUNTY, OREG.