

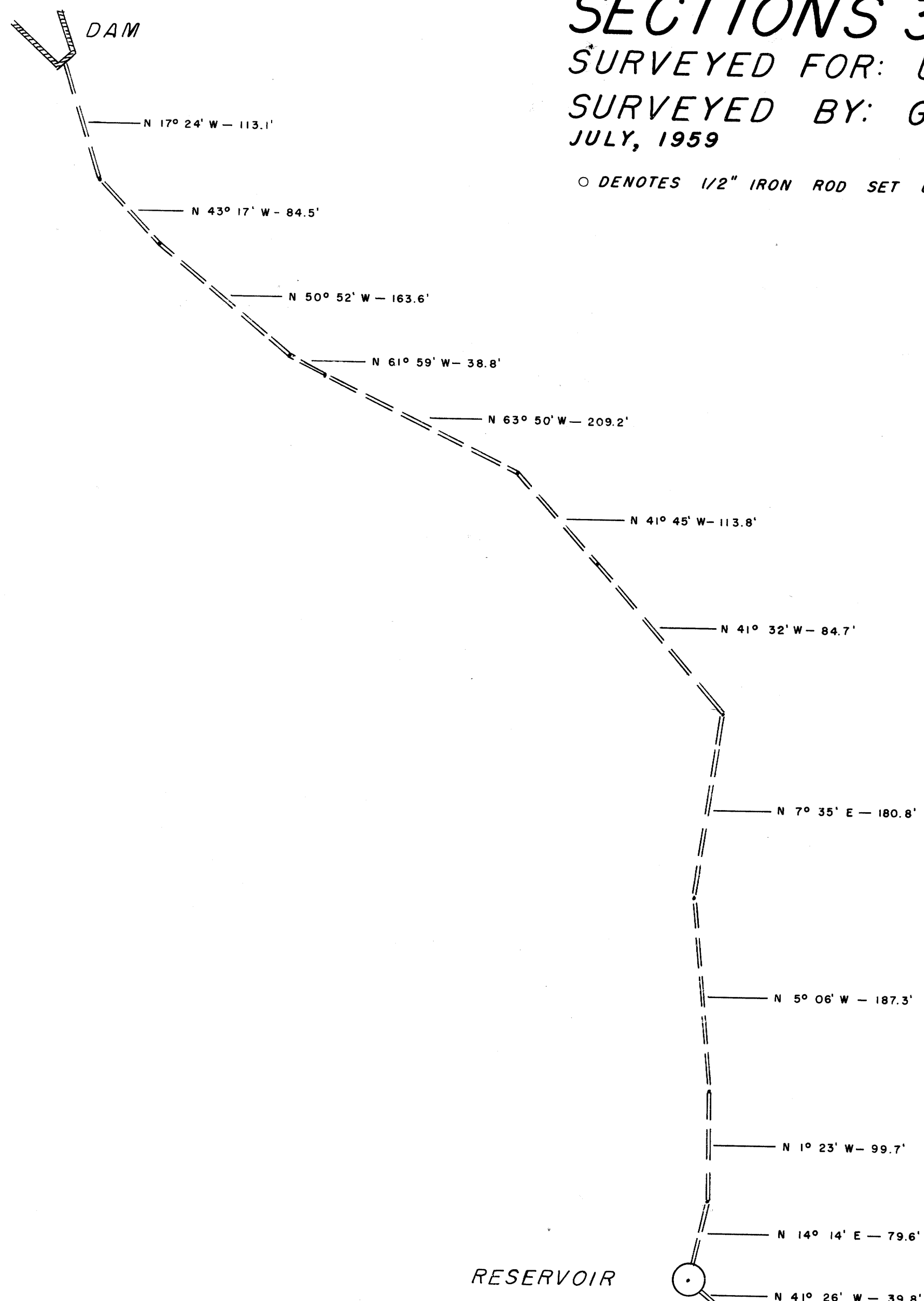
COUNTY SURVEYOR'S OFFICE
NOT REMOVE FROM OFFICE

METES & BOUNDS SURVEY OF U.S.P.C. LITTLE RIVER CAMP SECTIONS 3 & 10, T 27 S, R 2 W,

SURVEYED FOR: UNITED STATES PLYWOOD CORP.
SURVEYED BY: G. R. LECKLIDER — ENGINEER
JULY, 1959
SCALE: 1" = 100'

○ DENOTES 1/2" IRON ROD SET UNLESS DESIGNATED

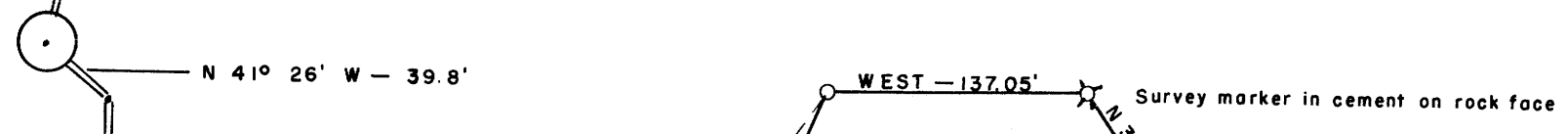
G. Robert Lecklider
REGISTERED PROFESSIONAL
ENGINEER
STATE OF MISSOURI



NOTE:
ALL BEARINGS BASED ON SOLAR OBSERVATION



RESERVOIR

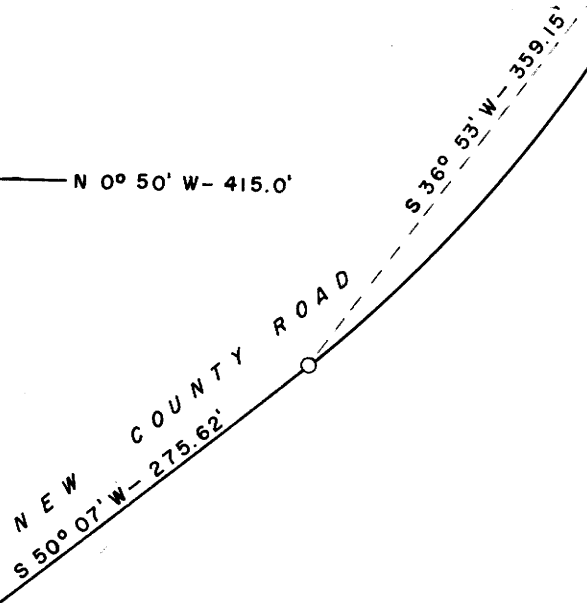


Δ = 27°
R = 769.2'
D = 7° 29'
L = 360.0'

Δ = 41° 40'
R = 527.6'
D = 10° 53'
L = 382.3'

TOTAL ACRES 14.30
COUNTY ROAD 0.87
NET ACRES 13.43

6" WATERLINE



SOUTH - 265.00'

SEC. COR. 4/3:
FD.: 30" Fir stump - N 51° W - 93'
(reverse scribe visible)
Set: 1 1/2" galv. iron pipe

c. c. 9/10
FD.: 1 1/2" galv. iron pipe
30" Fir - S 78° E - 31.0' (scribe vis. - stump)
30" Fir - S 63° W - 79.0' (scribe vis. - stump)
24" Pine - N 13° E - 12.9' (scribe vis. - 8' stub)
12" Fir - S 52° W - 40.2' (scribe vis. - stump)
16" Fir - N 79° W - 70.6' (scribe vis. - dead)

Δ = 47° 16'
R = 284.5'
D = 20° 15'
L = 233.4'

SOUTH - 386.00'
351.30'



RECEIVED
JUL 27 1959
COUNTY SURVEYOR
MURRAY, MISSOURI

G. ROBERT LECKLIDER

ENGINEER

P. O. BOX 368

PHONE ORCHARD 3-3302
ROSEBURG, OREGON

July, 1959

CLOSING CORNER OF SECTIONS 9 & 10, T 27 S, R 2 W:

FOUND: 1½" Galv iron pipe for corner from which:
 30" Fir bears S 78* E-31.0 feet (Orig. B.T.; now a stump; scribe vis.)
 30" Fir bears S 63* W-79.0 feet (orig B.T.; now a stump; scribe vis.)
 24" Pine bears N 13* E-12.9 feet (8 ft. stub; badly decayed; scribe vis.)
 12" Fir bears S 52* W-40.2 feet (now a stump with remainder of tree near;
 scribe vis.; mkd. CS; no record of this B.T.)
 16" Fir bears N 79* W-70.6 feet (now dead; chopped open; scribe vis.)
 1957 GLO Brass Cap bears N 1* 57' E-11.0 feet (Also new B.T's. referring
 to this Brass Cap in GLO records.)

SECTION CORNER OF SECTIONS 3 & 4, T 27 S, R 2 W:

FOUND: A shallow hole in the ground 70.0 feet West of the Closing Corner
 of Sections 9 & 10 described above from which:
 30" Fir bears N 51* W-93.0 feet (Orig. B.T.; badly decayed; reverse
 scribe plainly visible on thin pitchy shell; now a stump)
 1957 GLO Brass Cap bears N 48* 34' W-14.0 feet (Also new B.T's. referring
 to this Brass Cap in GLO records.)

NOTE: The closing corner of sections 9 and 10 was renewed as a common corner in
 1929 by Ben Irving. In 1935 it was renewed again by Eppstien as a common
 corner.

FILED

RECEIVED

JUL 30 1959

COUNTY SURVEYOR
DOUGLAS COUNTY, ORE.

C.S. File.....51734.....

∞

Map File M 15730.....