

SUBDIVISION OF SECTION 18, TWP. 31S, RGE. 4W, W. M. FOR SUNNY VALLEY LUMBER CO.

SCALE: 1 IN. = 400 FEET

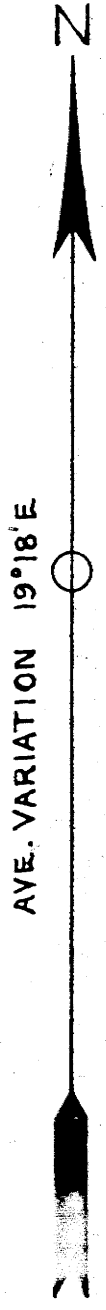
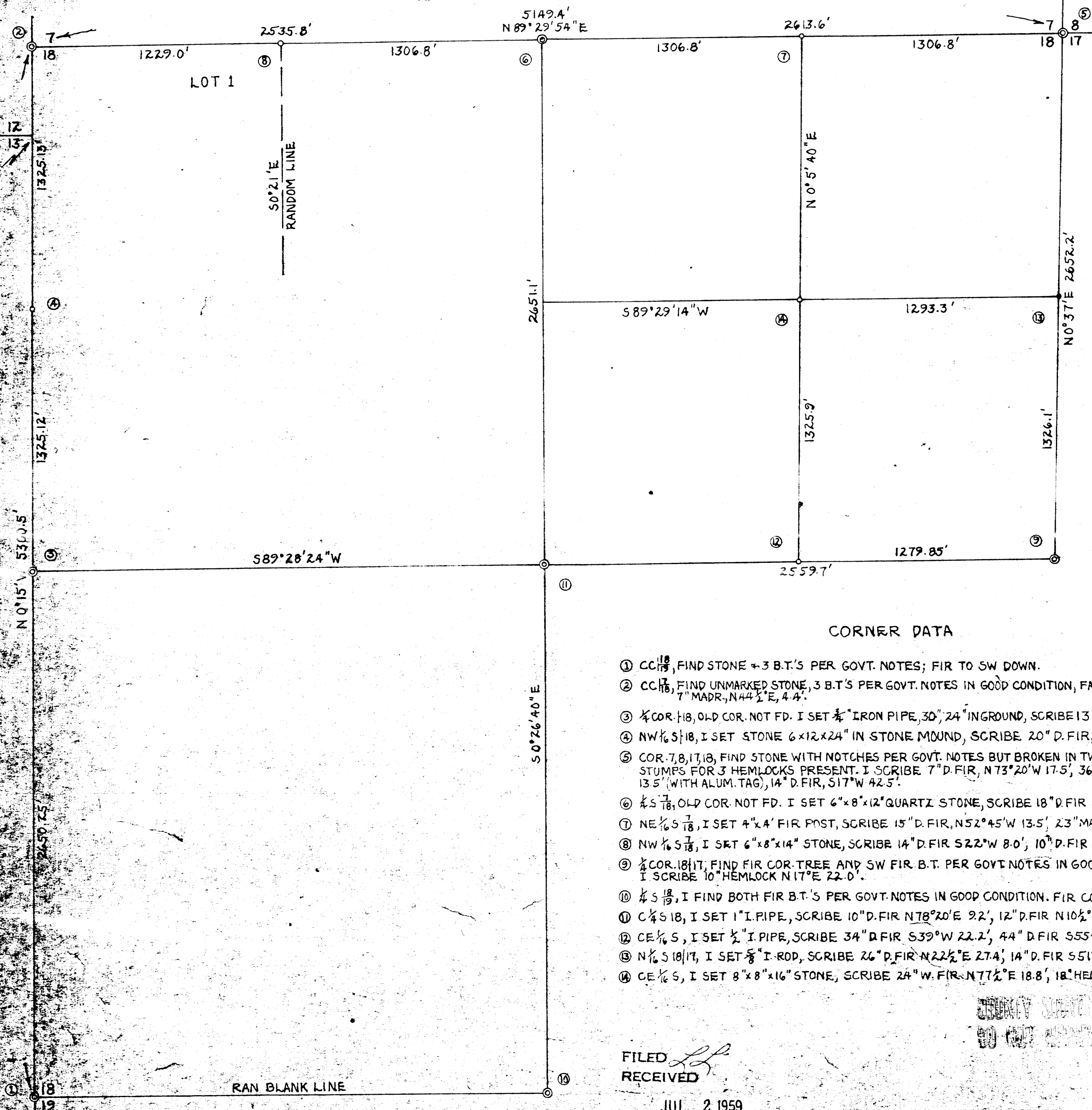


APRIL-MAY, 1959

R. M. THOMPSON

THIS COPY MADE FROM
A XEROX 2510

DATE 3-30-89



CORNER DATA

- ① CC 1/8, FIND STONE + 3 B.T.'S PER GOVT. NOTES; FIR TO SW DOWN.
- ② CC 1/8, FIND UNMARKED STONE, 3 B.T.'S PER GOVT. NOTES IN GOOD CONDITION, FACES OVERGROWN. I SET ALUM. TAG ON 7" MADR, N 44 1/2° E, 4.4'.
- ③ 1/4 COR. 18, OLD COR. NOT FD. I SET 1/2" IRON PIPE, 30", 24" IN GROUND, SCRIBE 13" D. FIR, N 46 1/2° E, 52.2', 12" D. FIR, S 24 1/2° E, 25.3'
- ④ NW 1/4 S 18, I SET STONE 6"x12"x24" IN STONE MOUND, SCRIBE 20" D. FIR, S 69° E, 11.4', 8" L. OAK N 37° E 23.6'
- ⑤ COR. 7, 8, 17, 18, FIND STONE WITH NOTCHES PER GOVT. NOTES BUT BROKEN IN TWO. ALL B.T.'S ROTTED OUT BUT ROTTED STUMPS FOR 3 HEMLOCKS PRESENT. I SCRIBE 7" D. FIR, N 73° 20' W 17.5', 36" D. FIR N 64° E 41.2', 13" D. FIR S 42° 40' E 13.5' (WITH ALUM. TAG), 14" D. FIR, S 17° W 42.5'.
- ⑥ 1/4 S 18, OLD COR. NOT FD. I SET 6"x8"x12" QUARTZ STONE, SCRIBE 18" D. FIR S 74° W 18.1', (AL. TAG) 12" D. FIR N 45 1/2° E 21.6'
- ⑦ NE 1/4 S 18, I SET 4"x4" FIR POST, SCRIBE 15" D. FIR, N 52° 45' W 13.5', 23" MADR. S 4° W 22.5'.
- ⑧ NW 1/4 S 18, I SET 6"x8"x14" STONE, SCRIBE 14" D. FIR S 22° W 8.0', 10" D. FIR N 4° 45' W 24.2'.
- ⑨ 1/4 COR. 18/17, FIND FIR COR. TREE AND SW FIR B.T. PER GOVT. NOTES IN GOOD CONDITION. OTHER B.T. ROTTED OUT. I SCRIBE 10" HEMLOCK N 17° E 22.0'.
- ⑩ 1/4 S 18, I FIND BOTH FIR B.T.'S PER GOVT. NOTES IN GOOD CONDITION. FIR COR. TREE NOW DEAD STUB, SCRIBE VISIBLE.
- ⑪ C 1/4 S 18, I SET 1" I. PIPE, SCRIBE 10" D. FIR N 78° 20' E 9.2', 12" D. FIR N 10 1/2° W 36.5'.
- ⑫ CE 1/4 S, I SET 1/2" I. PIPE, SCRIBE 34" D. FIR S 39° W 22.2', 44" D. FIR S 55 1/2° E 11.2'.
- ⑬ N 1/4 S 18/17, I SET 1/2" I. ROD, SCRIBE 26" D. FIR N 22 1/2° E 27.4', 14" D. FIR S 51° 40' W 17.7'.
- ⑭ CE 1/4 S, I SET 8"x8"x16" STONE, SCRIBE 24" W. FIR N 77 1/2° E 18.8', 18" HEMLOCK S 85° 40' W 12.9'.

FILED RECEIVED

JUL 2 1959

COUNTY SURVEYOR
DOUGLAS COUNTY, ORE.