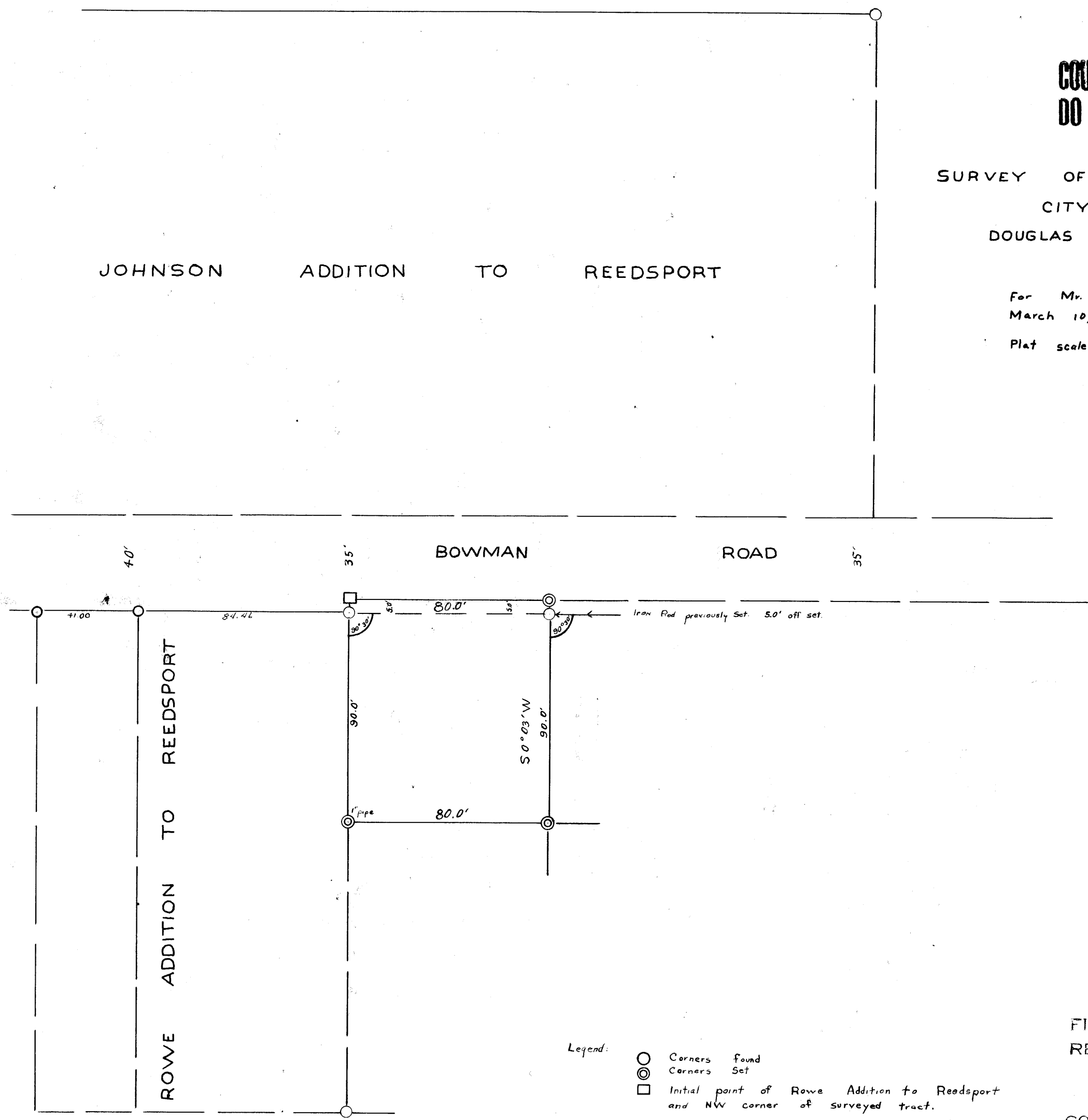


COUNTY SURVEYORS FILE DATA
DO NOT REMOVE FROM OFFICE

SURVEY OF THE LARSON TRACT
CITY OF REEDSPORT
DOUGLAS COUNTY, OREGON

For Mr. Leonard Larson
March 10, 1959
Plat scale: 1" = 40'

JOHNSON ADDITION TO REEDSPORT



Legend:

- Corners Found
- ⊙ Corners Set
- Initial point of Rowe Addition to Reedsport and NW corner of surveyed tract.

REGISTERED
OREGON
LAND SURVEYOR

Warren D. Hochman

MAY 10, 1957
WARREN D. HOCHMAN
300

FILED
RECEIVED

JUL 1 1959

COUNTY SURVEYOR
DOUGLAS COUNTY, ORE.