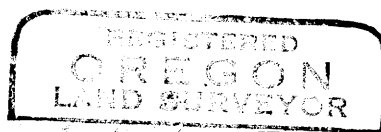


COUNTY SURVEYORS FILE NO. 49/158
DO NOT REMOVE FROM OFFICE

COUNTY SURVEYOR'S OFFICE
DOUGLAS COUNTY, OREGON

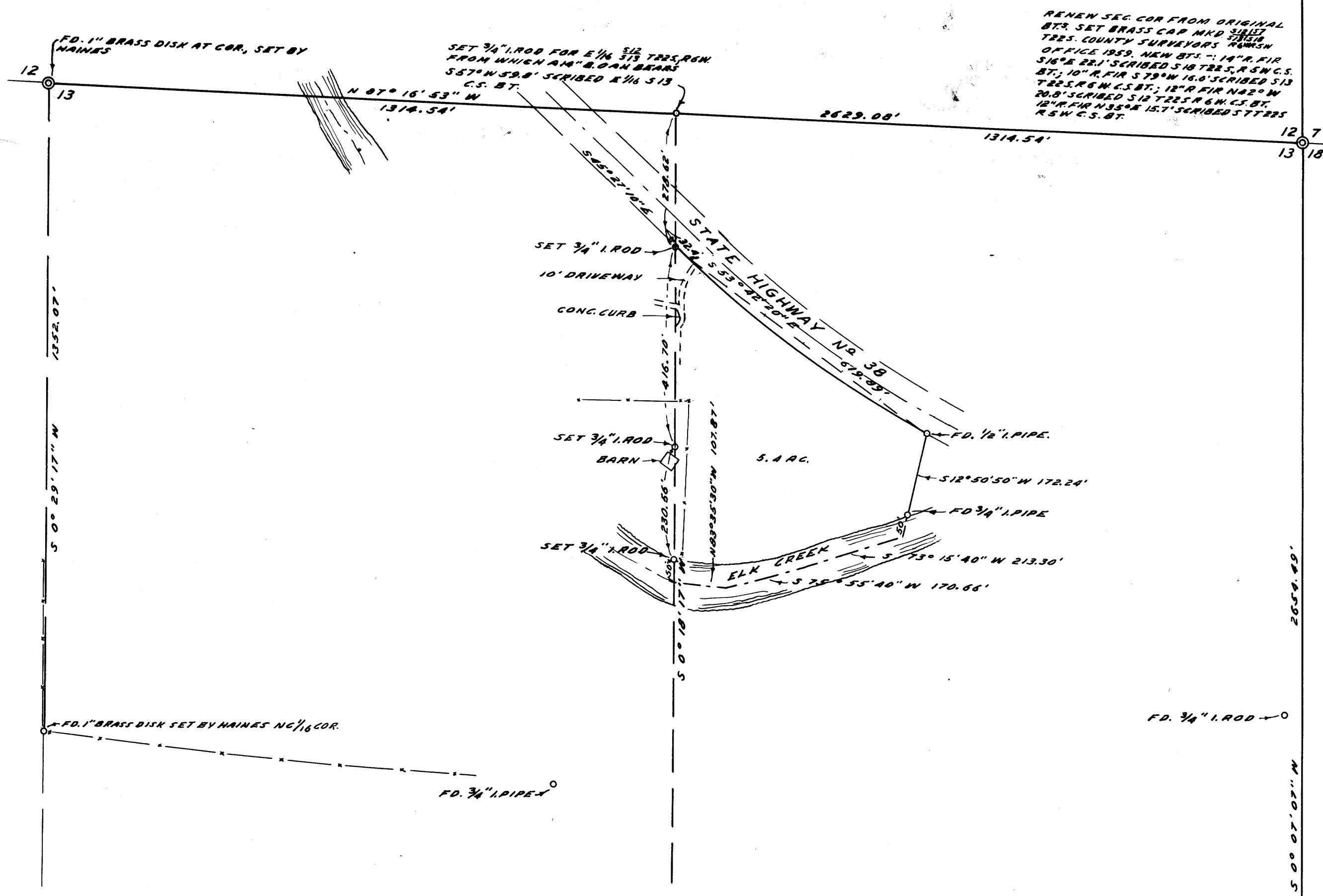
SURVEY FOR DEED DESCRIPTION
SECTION 13, T.22S, R.6W, W.M.



James W. Byron
NOV. 6, 1953
JAMES W. BYRON
303

FRED M. DARBY COUNTY SURVEYOR
SURVEYED JUNE 19, 1959 BY
JAMES W. BYRON - DEPUTY SCALE 1" = 200'
SURVEYED FOR W. E. CLEVINGER

FD. 3/4" PIPE AT COR. 2 OLD
BT. RENEW 1/4 COR. NEW BT. 2
12" MAPLE, 5.25" x 46.0' SCRIBED 12
14.57' C.S. BT. 72" R. FIR, 53' E. MC
54°38'20" E 176.25'
72" R. FIR BT.



RENEW SEC. COR FROM ORIGINAL
BT. SET BRASS CAP AND Scribed
TRSS. COUNTY SURVEYORS HAINES
OFFICE 1959. NEW BT. 14" R. FIR
516° E. BT. SCRIBED 518 TRSS. R. SW C.S.
BT. 10" R. FIR 578' W 16.0' SCRIBED 513
7.25' SCRIBED 518 TRSS. R. N. C.S. BT.
12" R. FIR 155' W 15.7' SCRIBED 518 TRSS
R. SW C.S. BT.

NOTE: BEARINGS ARE TRUE, BASED
ON A SOLAR OBSERVATION
TAKEN JUNE 19, 1959

FD. CHANNEL IRON AT COR. 2 ORIG. BT.
RENEW 1/4 COR. 13/18 TRSS. R. SE C.S. BT.
NEW BT. 7" BLACK OAK 46'30" E 18"
SCRIBED 14.518 C.S. BT. 15" BLACK
OAK N10°30' W 160.2' SCRIBED
14.513 C.S. BT.

CS FILE FOLDER

CONTAINS

MORE

INFORMATION