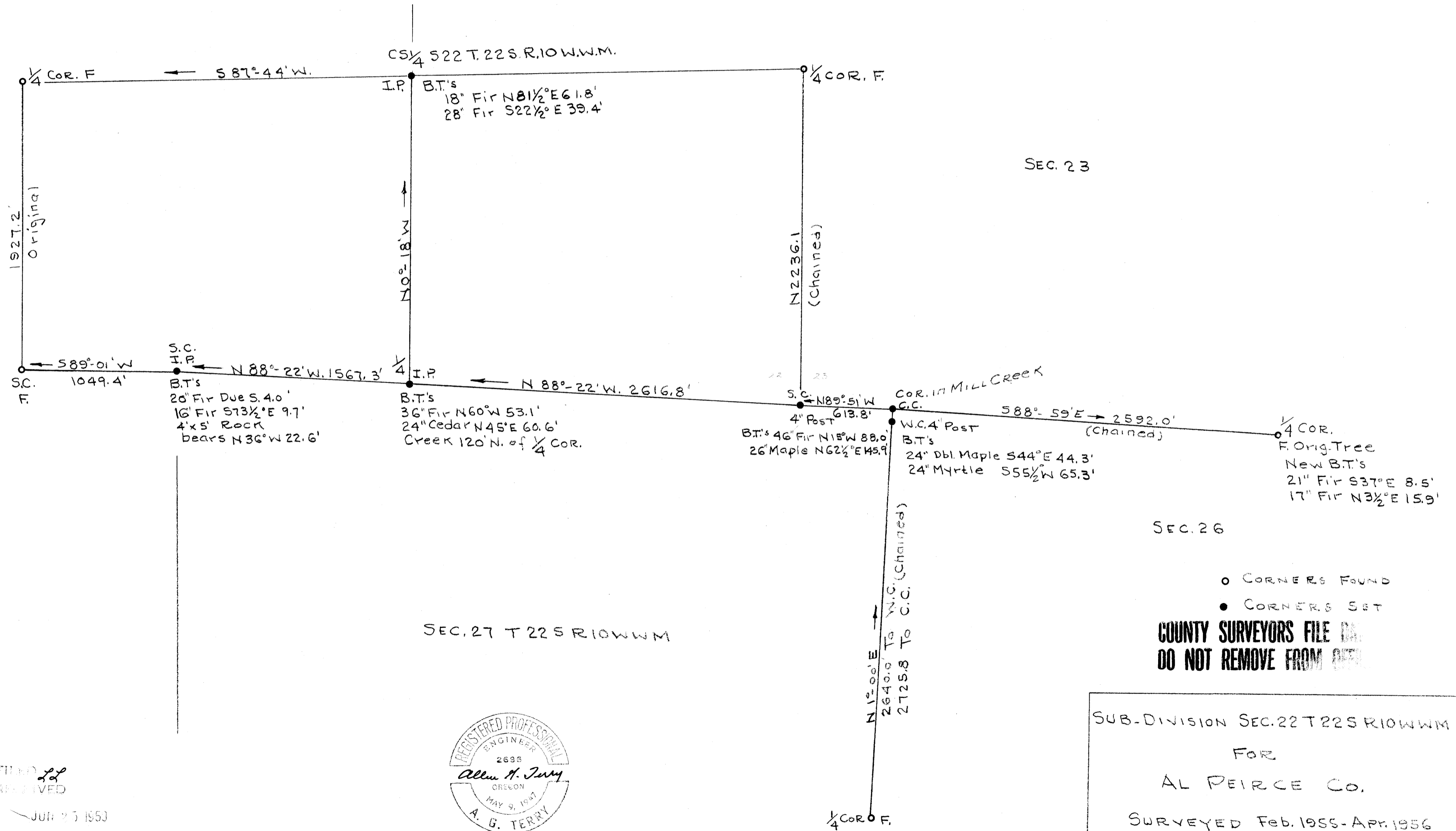


1/4 COR FOUND  
N. Bdry. S22

SEC. 22 T, 22 S. R. 10 W. W. M.



FILED *LL*  
RECEIVED  
JUN 25 1953  
COUNTY SURVEYOR  
DOUGLAS COUNTY, ORE.



○ CORNERS FOUND  
● CORNERS SET  
**COUNTY SURVEYORS FILE**  
**DO NOT REMOVE FROM FILE**

SUB-DIVISION SEC. 22 T 22 S R 10 W W M  
FOR  
AL PEIRCE CO.  
SURVEYED Feb. 1955-APR 1956  
BY  
A. G. TERRY & R. COUGHLIN  
SCALE 1" = 500'

NOTE - See 1947 Survey M 15-17