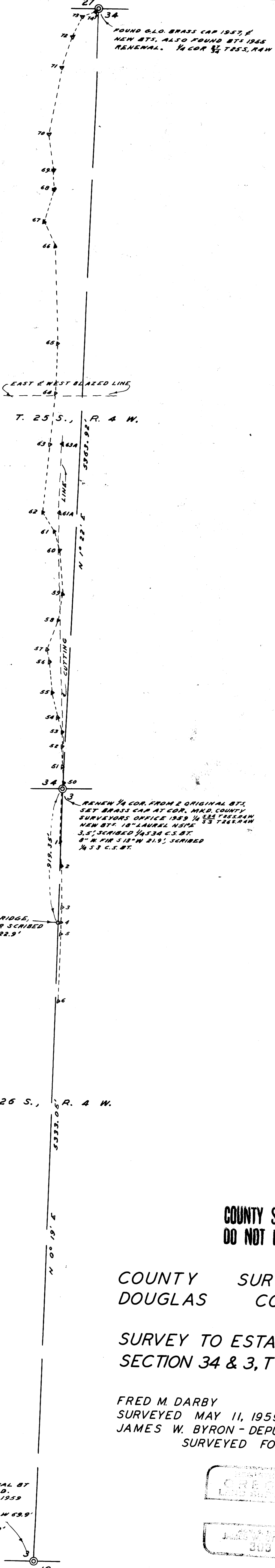


Δ No	DISTANCE FROM Δ TO TRUE LINE
1	EAST 1.27'
2	WEST 7.84'
3	" 23.34'
4	" 21.87'
5	" 20.98'
6	" 15.71'
50	" 1.95'
51	EAST 3.58'
52	" 13.23'
53	" 18.89'
54	" 60.43'
55	" 107.78'
56	" 129.91'
57	" 155.49'
58	" 87.93'
59	" 61.44'
60	" 104.65'
61	" 149.39'
61A	" 117.00'
62	" 240.99'
63	" 209.57'
63A	" 121.28'
64	" 186.20'
65	" 185.20'
66	" 233.58'
67	" 320.81'
68	" 259.02'
69	" 269.78'
70	" 314.80'
71	" 246.79'
72	" 175.65'
73	" 108.01'
74	" 16.86'



SET 3/4" I. ROD TOP OF RIDGE, FROM WHICH A 12" R. FIR SCRIBED C.S. BT. BEARS N48°E 22.9'

NOTE: BEARINGS ARE TRUE, BASED ON A SOLAR OBSERVATION TAKEN MAY 14, & 22, 1959

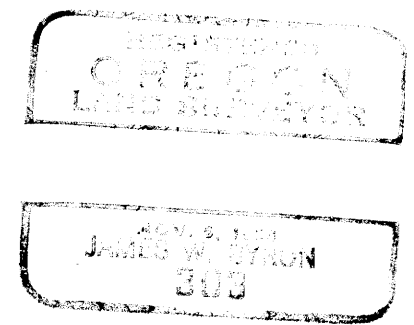
COUNTY SURVEYORS FILE  
DO NOT REMOVE FROM OFFICE

COUNTY SURVEYOR'S OFFICE  
DOUGLAS COUNTY, OREGON

SURVEY TO ESTABLISH 1/4 SEC. LINE  
SECTION 34 & 3, T 25 & 26 S., R 4 W., W. M.

FRED M. DARBY COUNTY SURVEYOR  
SURVEYED MAY 11, 1959 BY  
JAMES W. BYRON - DEPUTY SCALE 1" = 400'  
SURVEYED FOR T. W. JONES

RENEW 1/4 COR. FROM ORIGINAL BT SET BRASS CAP AT COR. MKD. COUNTY SURVEYORS OFFICE 1959 1/4 33A T26S, R4W. NEW BTS.: 15" B. OAK, S70°W 69.9' SCRIBED 1/4 510 C.S. BT. 14" B. OAK, N 23° E 57.0' SCRIBED 1/4 53 C.S. BT.



CS FILE FOLDER

CONTAINS

MORE

INFORMATION