

COUNTY SURVEYORS FILE DATA
DO NOT REMOVE FROM OFFICE

P MAP FILE M14-8

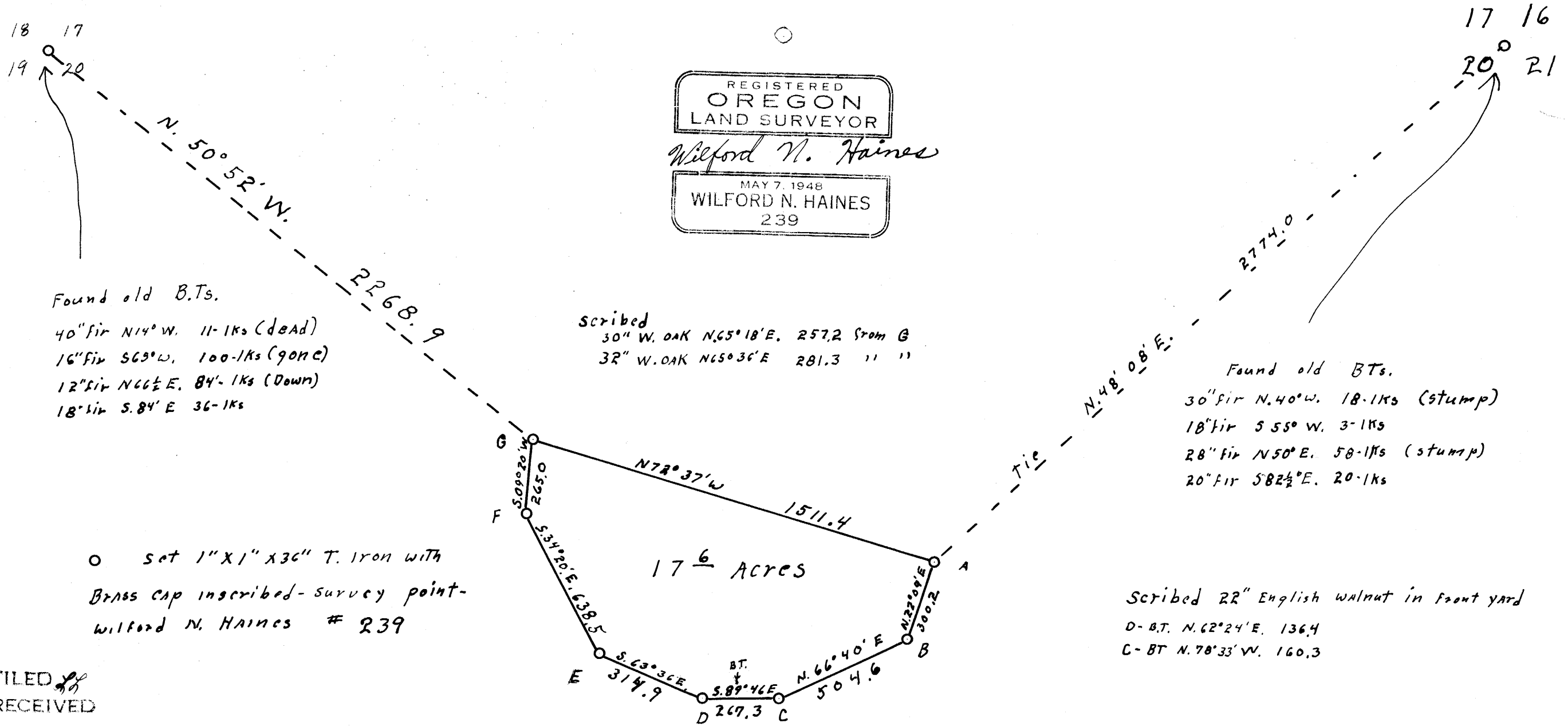
SECT. 20, T. 23 S R 5 W. W.M.

Survey for Deed Description for
Western Land & Timber Co.

Scale 1 inch = 400 feet

Feb. 1959.

REGISTERED
OREGON
LAND SURVEYOR
Wilford N. Haines
MAY 7, 1948
WILFORD N. HAINES
239



Found old B.T.s.

- 40" fir N. 14° W, 11-1ks (dead)
- 16" fir S. 69° W, 100-1ks (gone)
- 12" fir N. 66½° E, 84-1ks (Down)
- 18" fir S. 84° E, 36-1ks

Scribed
30" W. OAK N. 65° 18' E, 257.2 from G
3R" W. OAK N. 65° 36' E, 281.3 " "

- Found old B.T.s.
- 30" fir N. 40° W, 18-1ks (stump)
 - 18" fir S. 55° W, 3-1ks
 - 28" fir N. 50° E, 58-1ks (stump)
 - 20" fir S. 82½° E, 20-1ks

Set 1" x 1" x 36" T. Iron with
Brass cap inscribed - survey point -
Wilford N. Haines # 239

Scribed 22" English Walnut in front yard
D-B.T. N. 62° 24' E, 136.4
C-B.T. N. 78° 33' W, 160.3

FILED
RECEIVED

MAR 3 1959

COUNTY SURVEYOR
DOUGLAS COUNTY, ORE.

M14-8