

COUNTY SURVEYORS FILE
DO NOT REMOVE FROM OFFICE

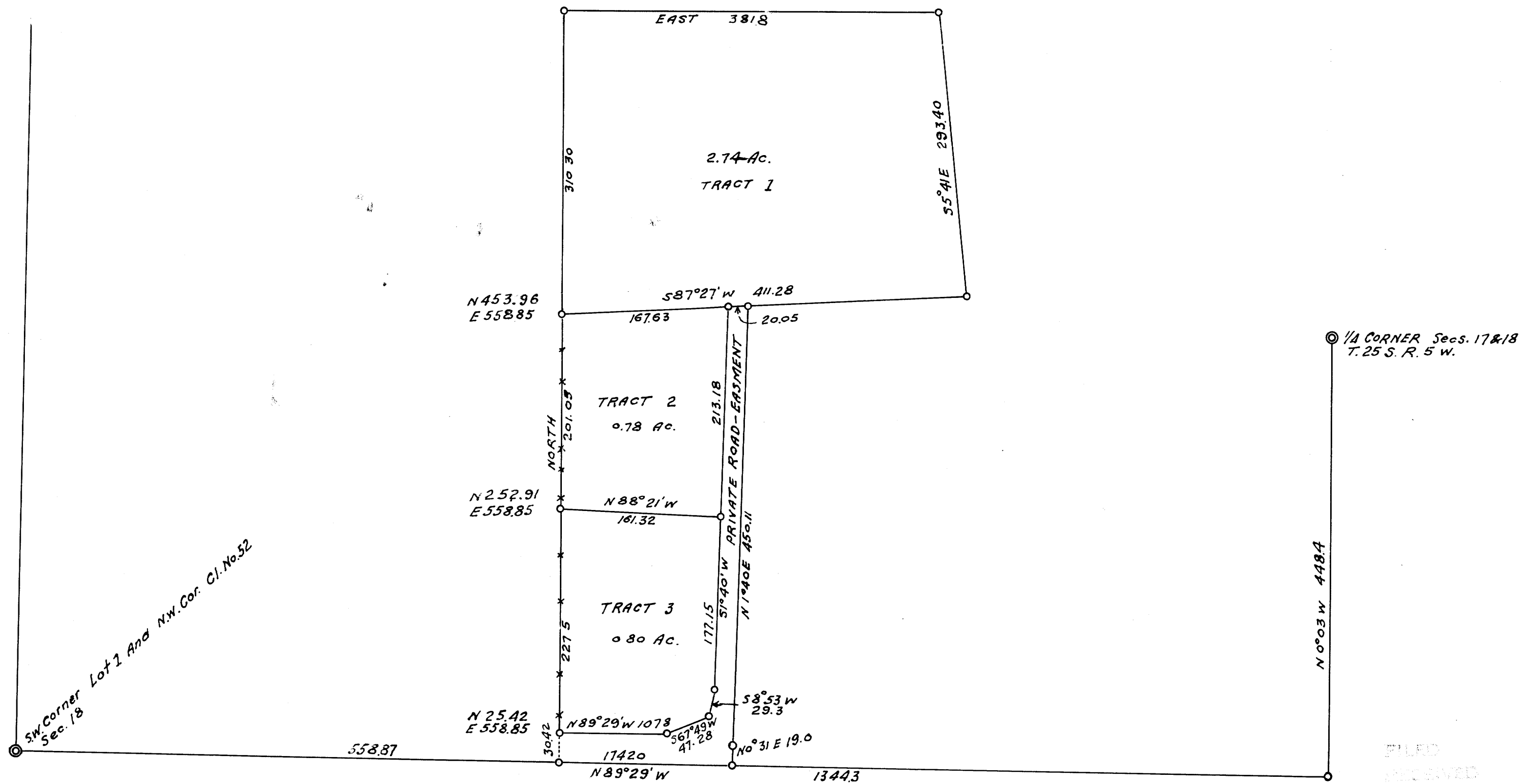
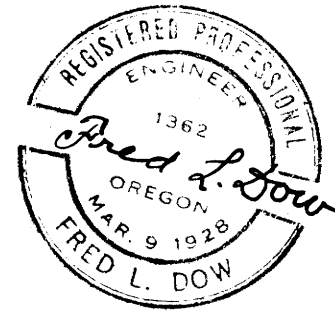
M 14 - 79

WALTER WILLOUGHBY

SUTHERLIN OREGON
SECTION 18, T.25 S.R.5 W.

APRIL 1952
SCALE 1" = 100'

FRED L. DOW
CIVIL ENGINEER



191 / 50 / 141

41-57

FILED
RECEIVED
MAY 1952
COUNTY SURVEYOR
DUGLASS COUNTY, ORE.