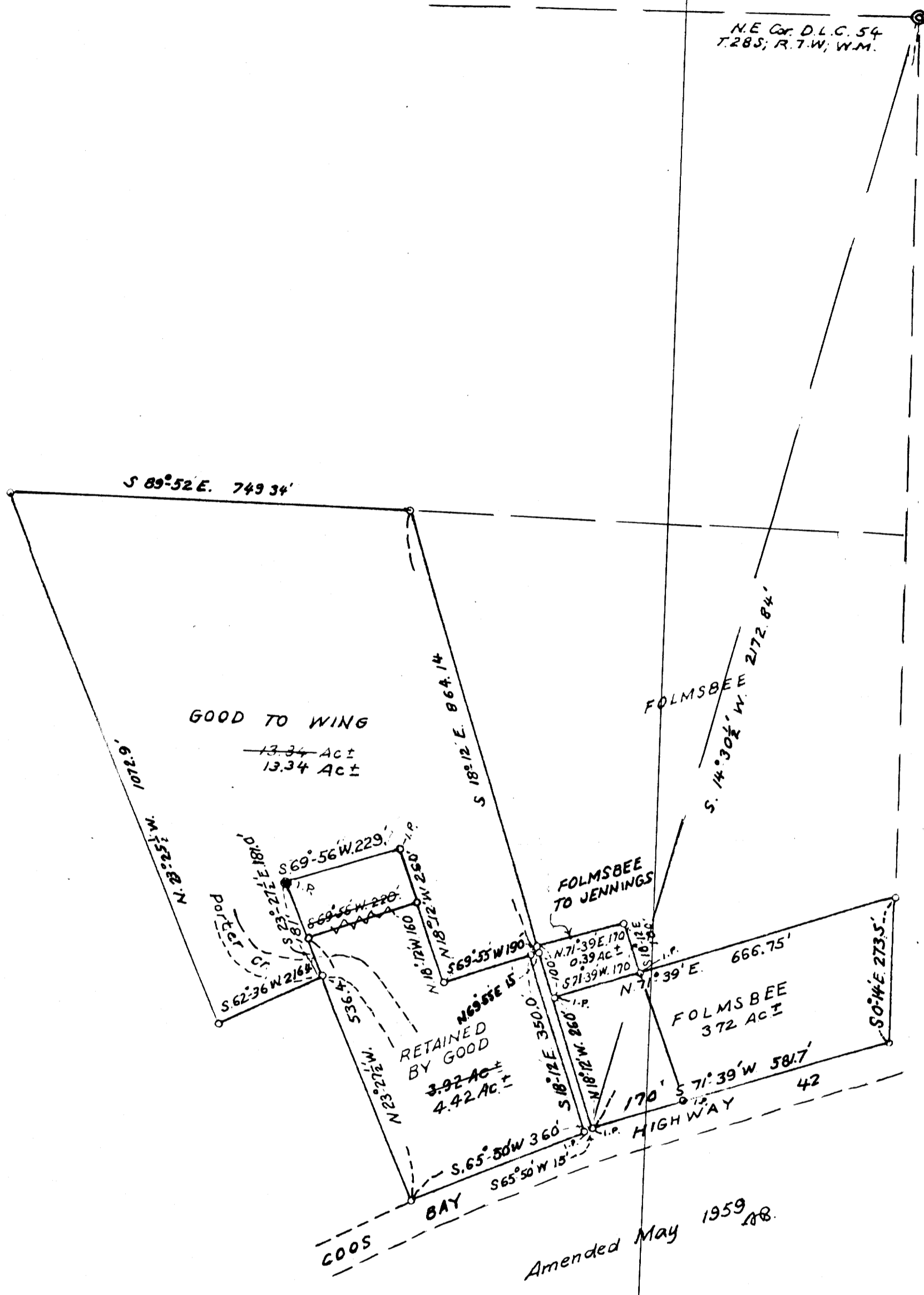


FILED
RECEIVED
JUN 2 1959
COUNTY SURVEYOR



THIS COPY MADE FROM
A XEROX 2510
DATE 5-8-89

COUNTY SURVEYORS FILE DATA
DO NOT REMOVE FROM OFFICE

GOOD, FOLMSBEE & WING PROPERTIES
ON PORTER CREEK
IN SEC. 29, T.28S, R.7W, WIL. MER.
Based on data from County Surveyor's
Records C.S. File 47/25 Nov. 1955.
Mar. 1959 *Attorney General* 1" = 200'