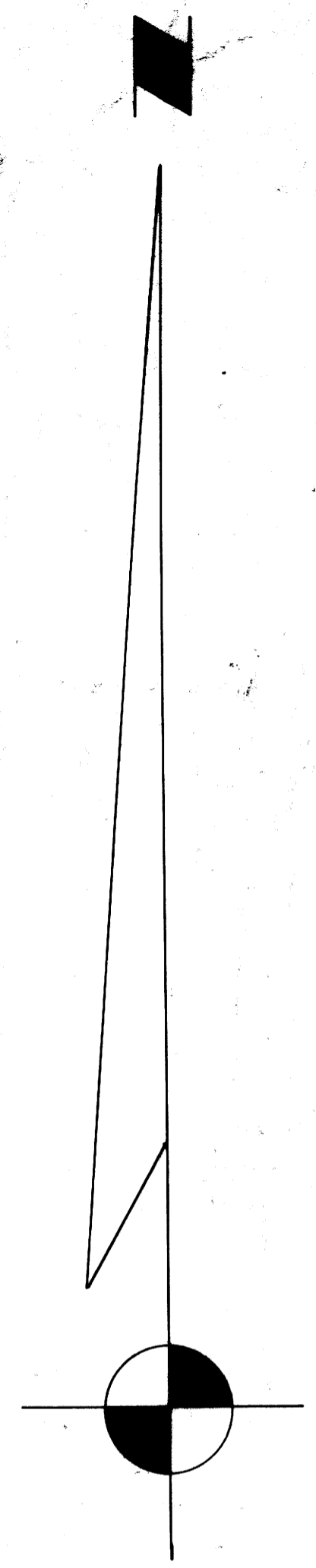
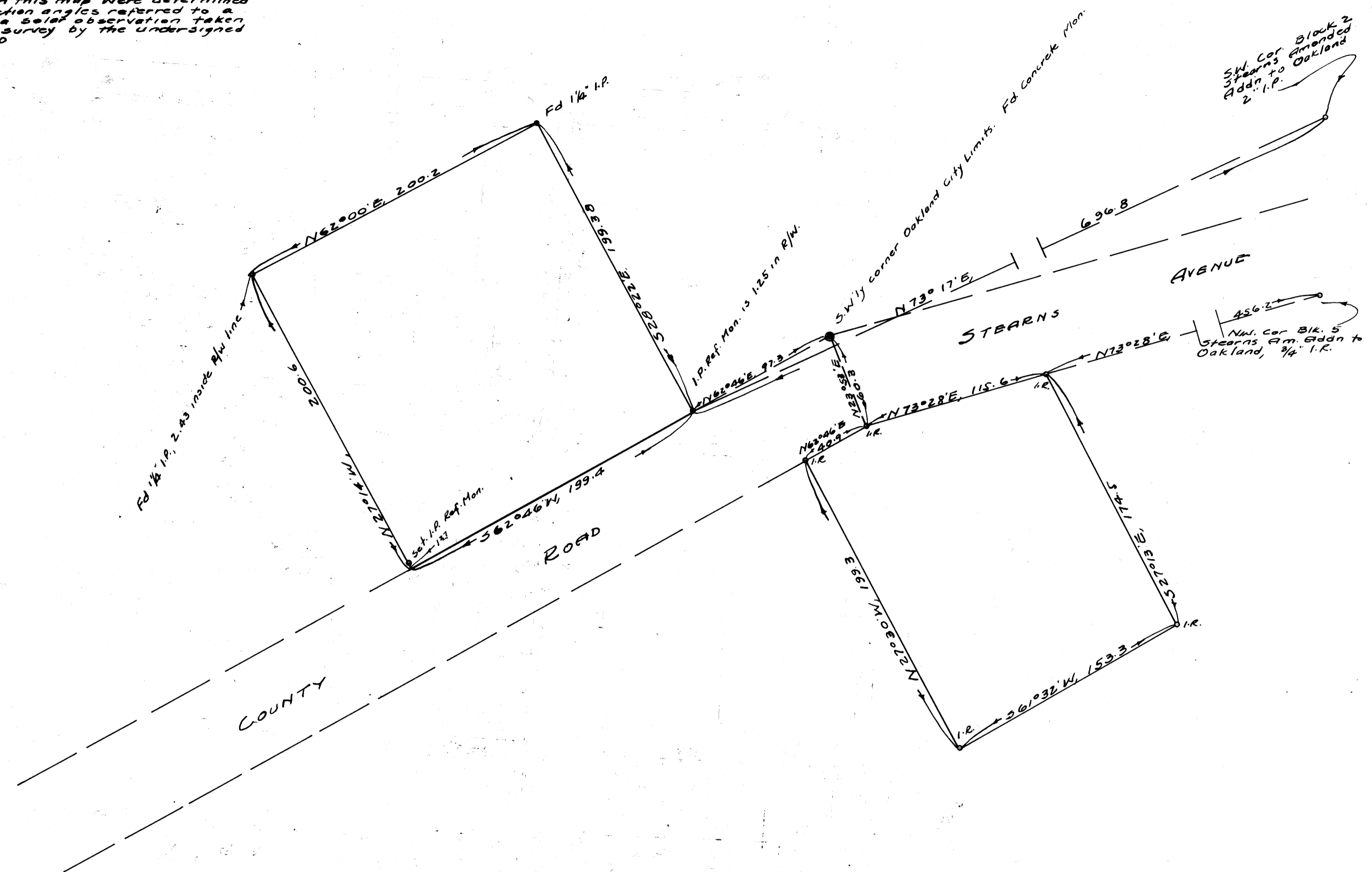


All bearings shown on this map were determined by the method of deflection angles referred to a meridian determined by a solar observation taken during the course of a survey by the undersigned engineer in April, 1950



SCALE 1"=50'



*me*  
 SURVEY TO ESTABLISH PROPERTY LINES  
 MARTIN BROTHERS BOX COMPANY  
 SECS. 4 & 9, T25S, R5W, WM.  
 DOUGLAS COUNTY OREGON



GRANT AND EVANS, ENGINEERS  
 ROSEBURG OREGON  
 SURVEYED 4-21-52, BY A.R. EVANS, P.E.

COUNTY SURVEYORS FILE DATA  
 DO NOT REMOVE FROM OFFICE

G.S. File #11-93  
 Map File M 14-69

M 14-69

FILE #1-93