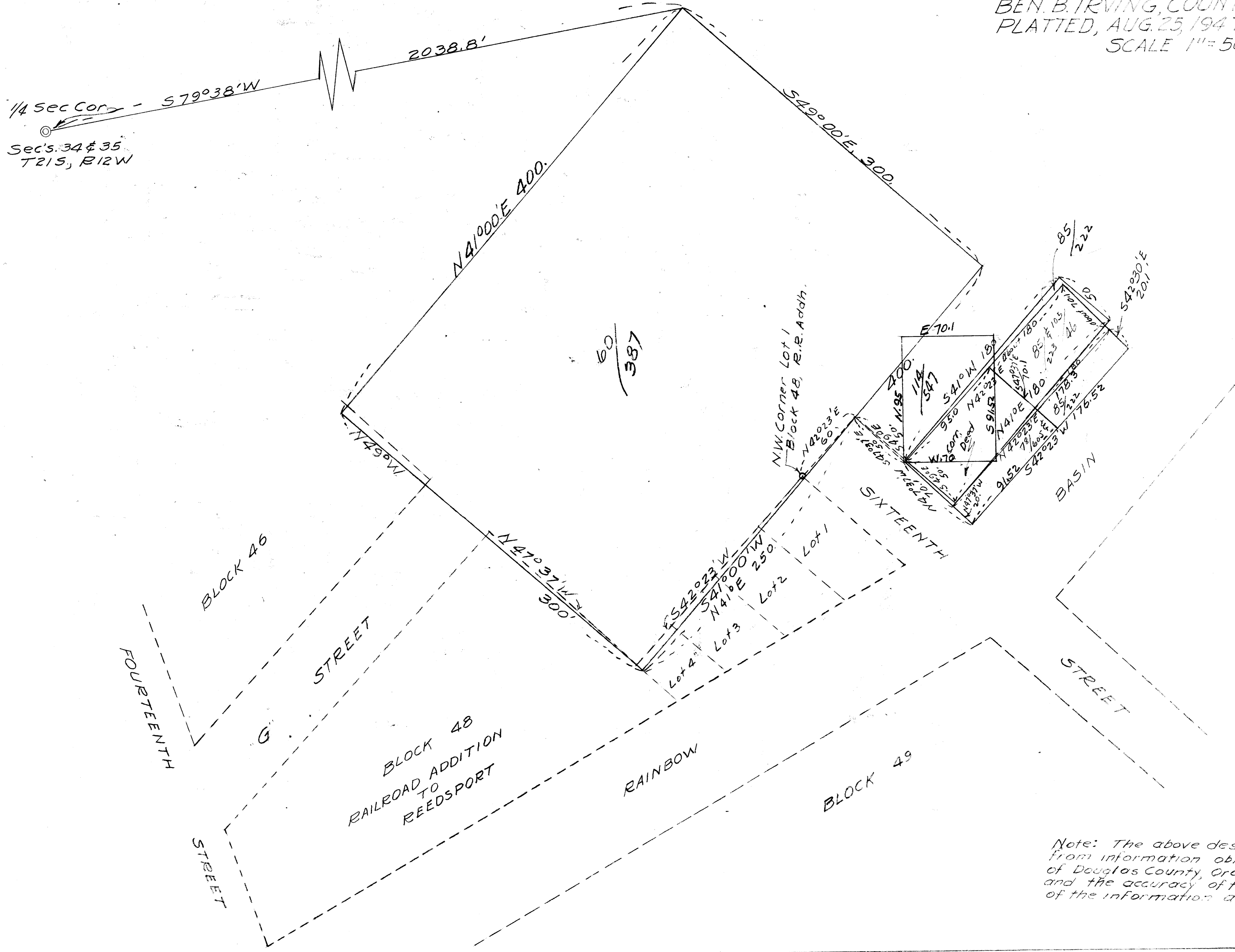


COUNTY SURVEYORS FILE DATA  
DO NOT REMOVE FROM OFFICE

COUNTY SURVEYOR'S OFFICE  
DOUGLAS COUNTY OREGON  
CERTAIN DEED DESCRIPTIONS  
SECTION 35, T21S, R12W W.M.  
BEN. B. IRVING, COUNTY SURVEYOR  
PLATTED, AUG. 25, 1947  
SCALE 1"=50'



Note: The above descriptions were platted from information obtained from Deed Records of Douglas County, Oregon. No survey was made and the accuracy of this map can only be that of the information available.  
A.R. Evans.

A.R. Evans 8/25/47

M 14-68