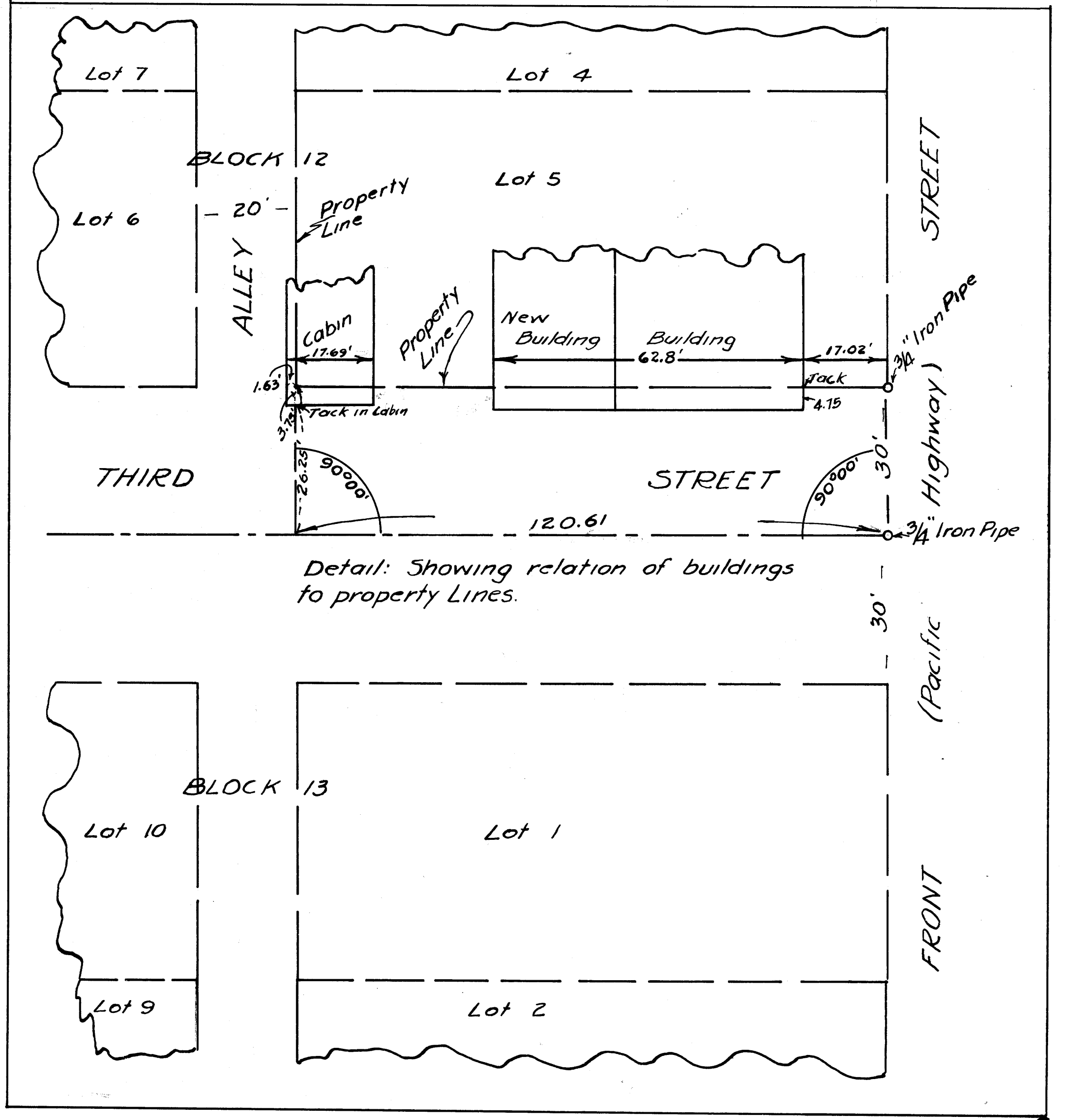


COUNTY SURVEYORS FILE
DO NOT REMOVE FROM OFFICE

COUNTY SURVEYOR'S OFFICE
DOUGLAS COUNTY OREGON
SURVEY SHOWING TRESPASS
BY BUILDINGS ON THIRD STREET
YONCALLA OREGON
 BEN B. IRVING COUNTY SURVEYOR
 SURVEYED SEPTEMBER 5-10, 1947
 BY N.E. RICHARDSON DEPUTY
 SCALE 1" = 100'



Detail: Showing relation of buildings to property Lines.