

79-1114
+9-+1 W

COUNTY SURVEYORS FILE OF
DO NOT REMOVE FROM OFFICE

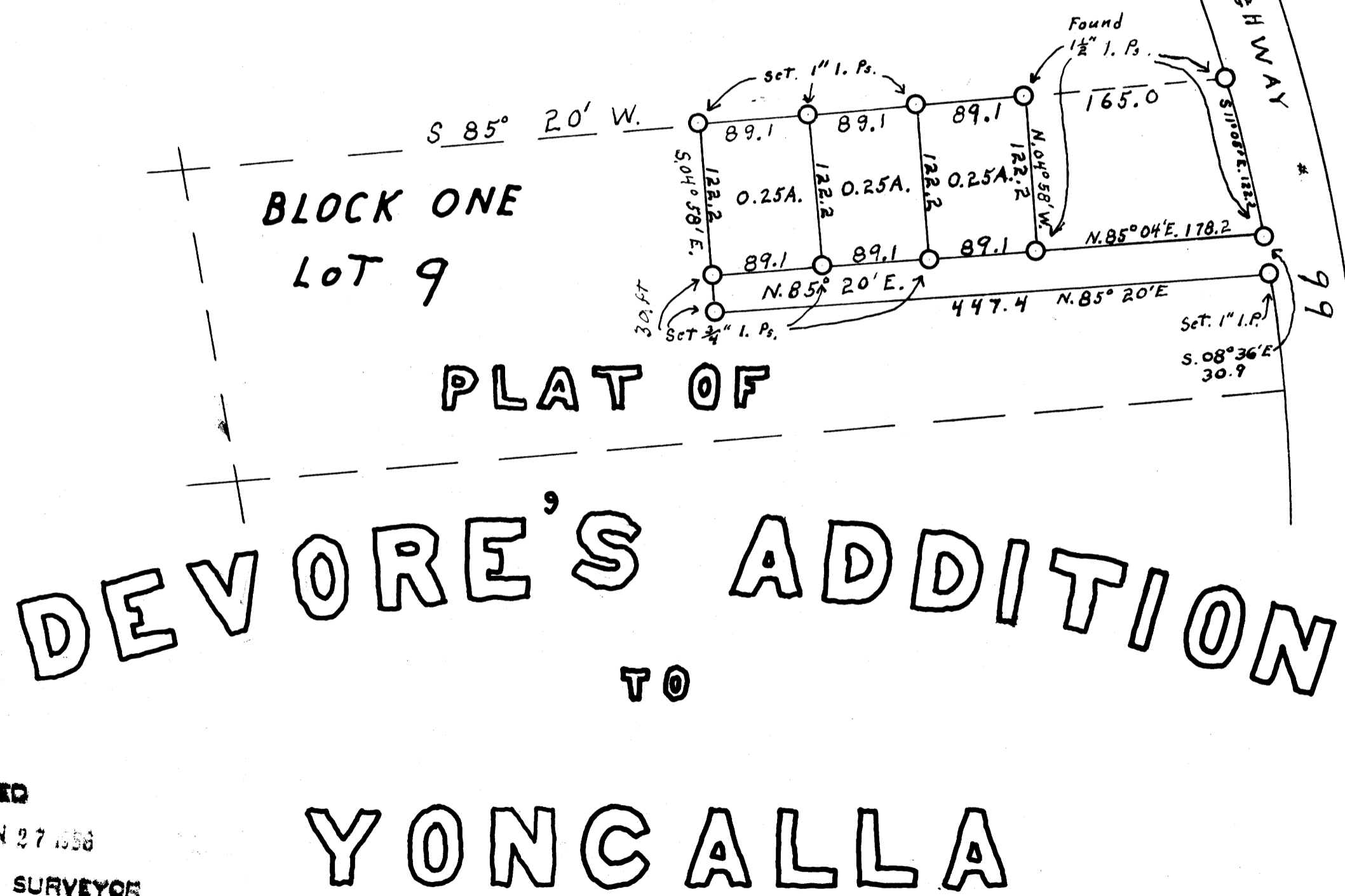
DOUGLAS COUNTY, OREGON
SURVEY FOR DEED DESCRIPTION,
IN SECTION 3, T23S, R5W, W.M.

WILFORD N. HAINES MAY, 5, 1954

SCALE 1" = 100'

REGISTERED
OREGON
LAND SURVEYOR

Wilford N. Haines
MAY 7, 1948
WILFORD N. HAINES
239



FILED
RECEIVED
JAN 27 1956
COUNTY SURVEYOR
DOUGLAS COUNTY, ORE.

C. S. File No. 42/122

AWB

MAP FILE M14-64