

Scale 1" = 40'

COUNTY SURVEYORS FILE DATA
DO NOT REMOVE FROM OFFICE

SURVEY FOR
M.E. CHURCH
DRAIN, OREGON.
FEB. 4, 1952

WILFORD N. HAINES
DRAIN, OREGON.

REGISTERED
OREGON
LAND SURVEYOR

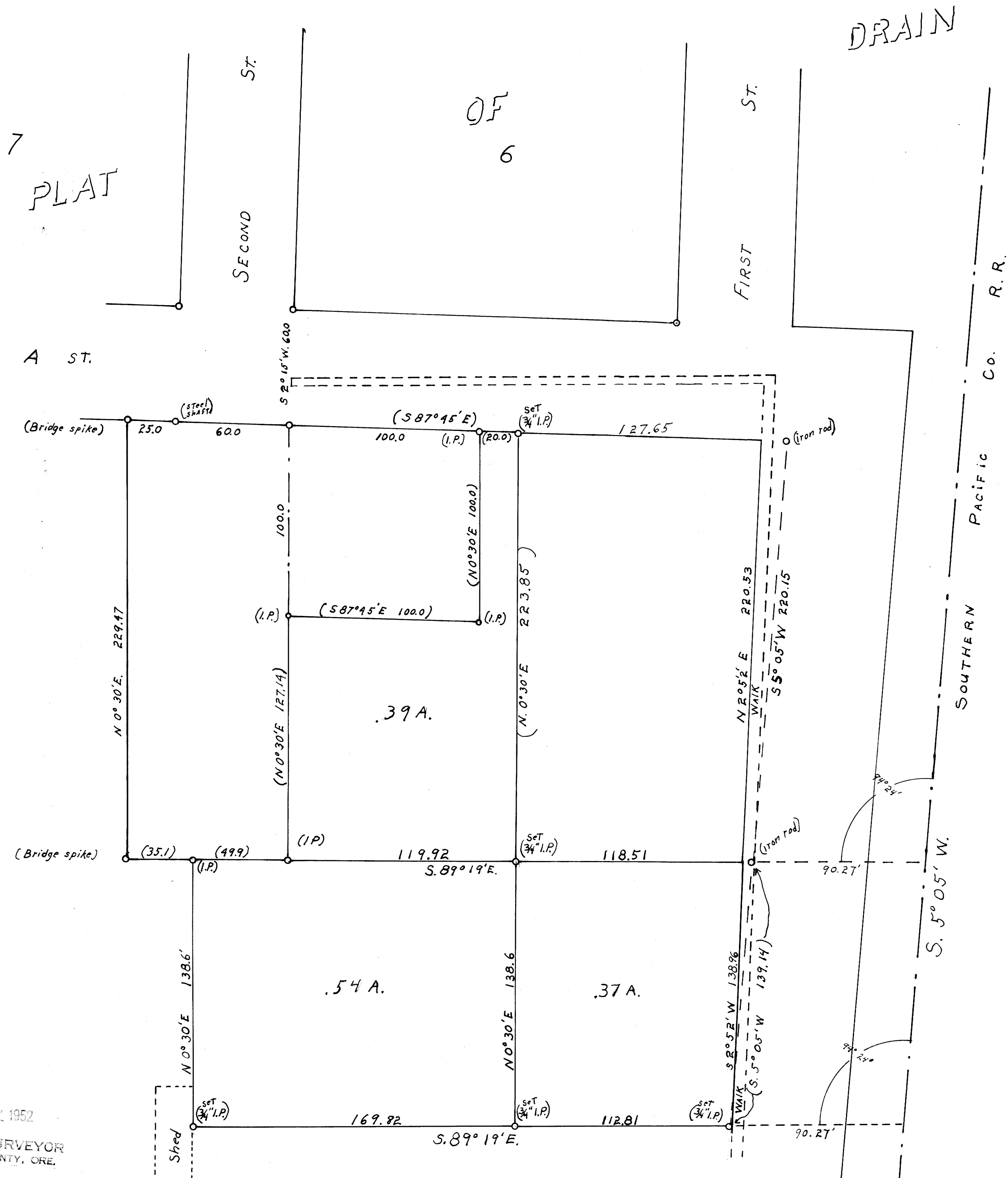
Wilford N. Haines

MAY 7, 1948
WILFORD N. HAINES
239

FILED
RECEIVED

MAR 24 1952

COUNTY SURVEYOR
DOUGLAS COUNTY, ORE.



MAP FILE M 14-56