

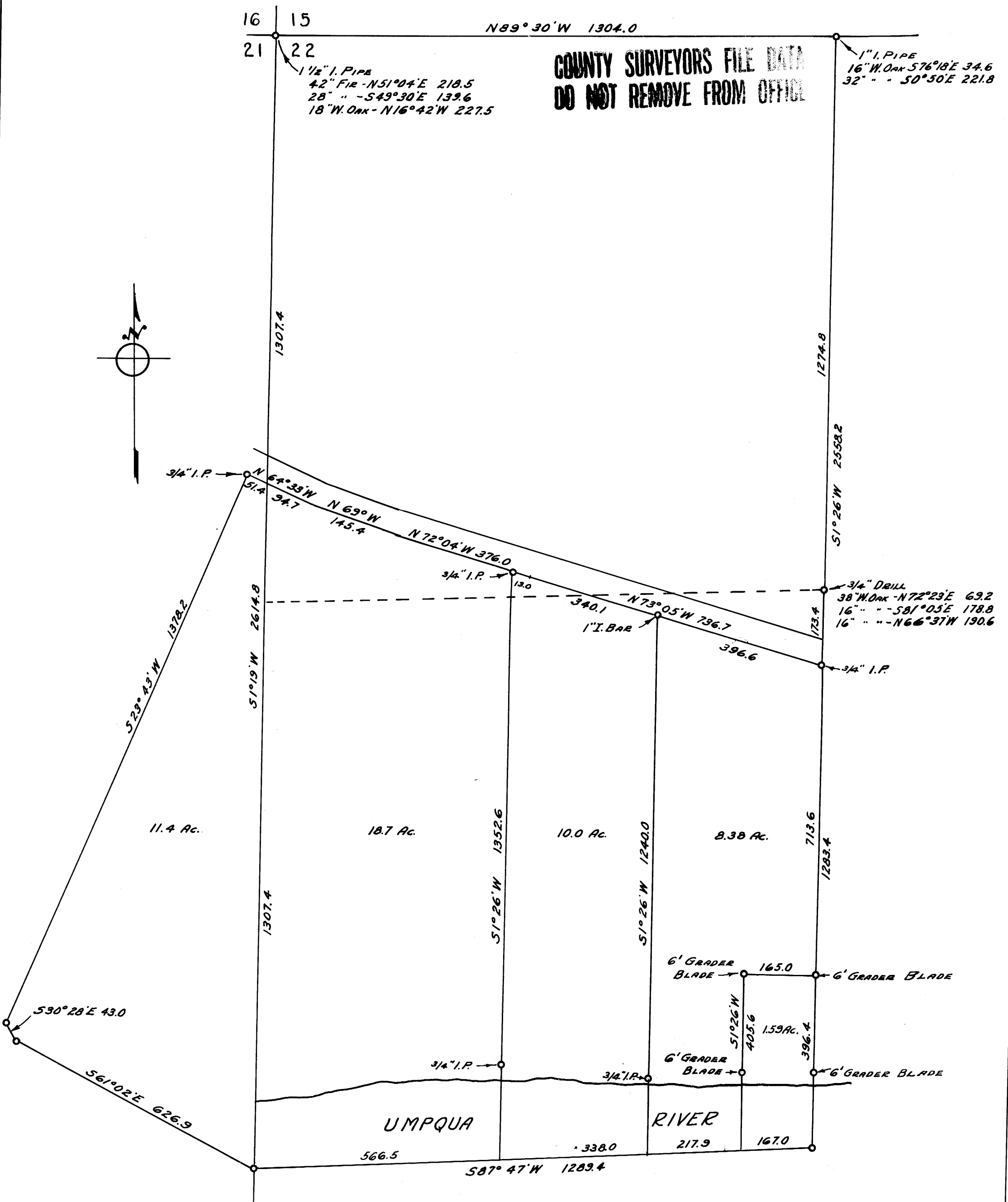
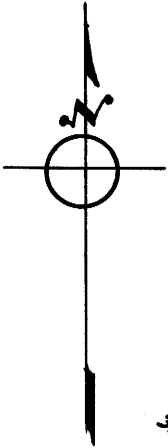
16 15
21 22

N89°30'W 1304.0

COUNTY SURVEYORS FILE DATA
DO NOT REMOVE FROM OFFICE

1" I. PIPE
16" W. Oak - N56°18'E 34.6
32" " - S0°50'E 221.8

1 1/2" I. PIPE
42" Fir - N51°04'E 218.5
28" " - S49°30'E 139.6
18" W. Oak - N16°42'W 227.5



11.4 Ac.

18.7 Ac.

10.0 Ac.

8.38 Ac.

S29°49'W 1378.2

S1°19'W 2614.8

1307.4

1307.4

S1°26'W 1352.6

S1°26'W 1240.0

713.6

1283.4

1274.8

S1°26'W 2558.2

3/4" I.P.

S14

59.7

145.4

N64°33'W

N69°W

N72°04'W

376.0

13.0

3/4" I.P.

340.1

N73°05'W

736.7

173.4

3/4" DRILL

38" W. Oak - N72°23'E 69.2

16" " - S81°05'E 178.8

16" " - N66°37'W 190.6

396.6

3/4" I.P.

173.4

173.4

3/4" I.P.

173.4

173.4

173.4

173.4

173.4

173.4

173.4

173.4

173.4

173.4

173.4

173.4

173.4

173.4

173.4

173.4

173.4

173.4

173.4

173.4

173.4

173.4

173.4

173.4

173.4

173.4

173.4

173.4

173.4

173.4

173.4

173.4

NOTE:-
THIS MAP WAS TRACED, BY ME, FROM A PRINT OF
A MAP OF SURVEY DONE BY GEO. J. WENDEROTH, R.L.S.
N^o. 5, SAID PRINT BEING SIGNED AND SEALED BY HIM; AND I
HEREBY CERTIFY THAT THIS TRACING IS A TRUE AND CORRECT
COPY OF SAID PRINT.

Fred M. Dancy
FRED M. DANCY
COUNTY SURVEYOR.

COUNTY SURVEYOR'S OFFICE
DOUGLAS COUNTY OREGON
SURVEY FOR
PETE ULAM, SECTIONS 21 & 22
T30S, R4W, W.M.
MARCH, 1947 SCALE 1" = 200'

C.S. FILE 47/12
MAP FILE M-14-53