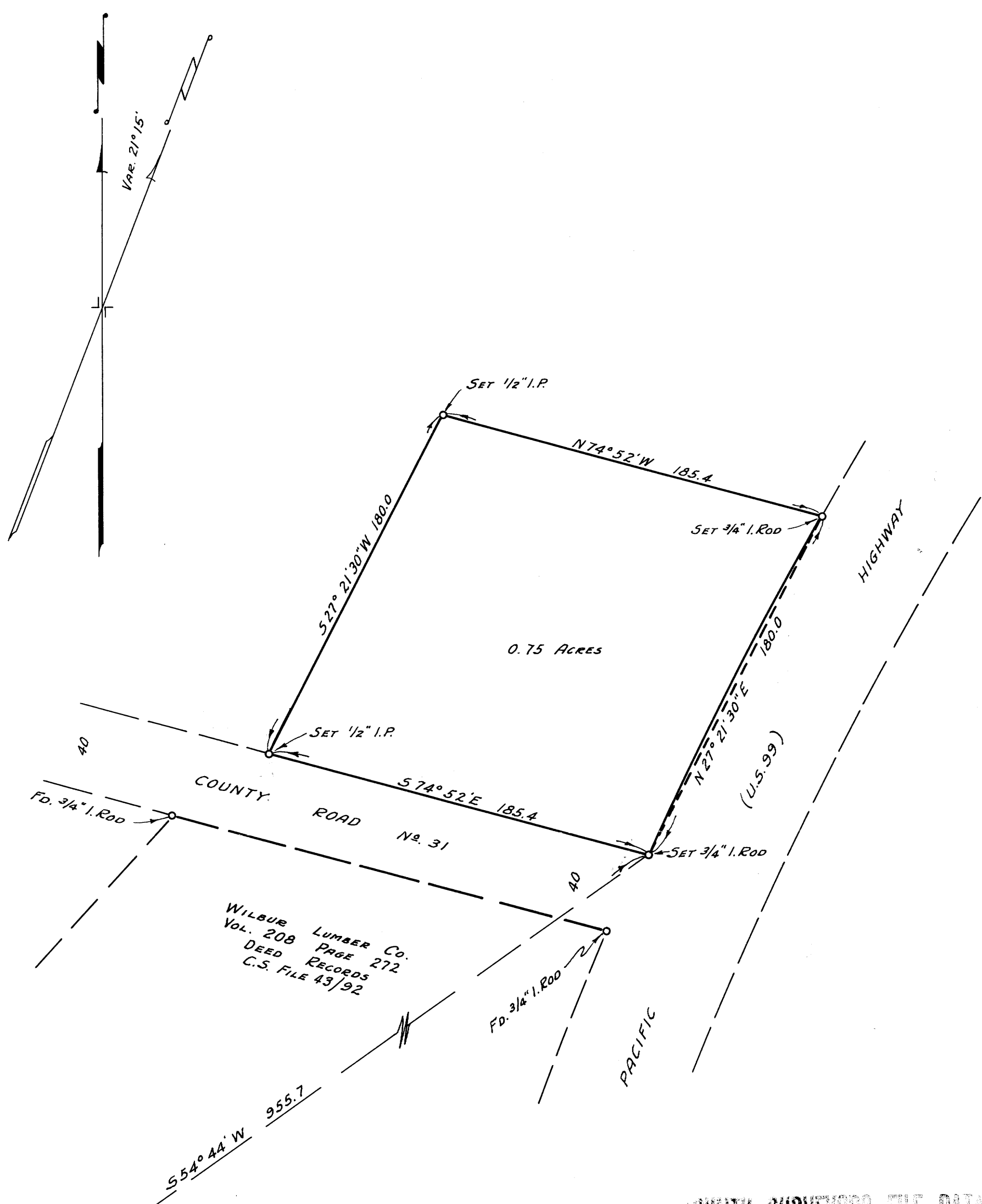


M 14-49  
O.S. 43/92



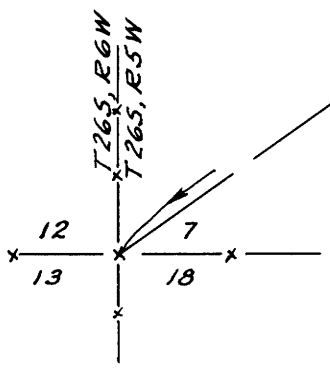
COUNTY ROAD No. 31

HIGHWAY

PACIFIC

WILBUR LUMBER CO.  
VOL. 208 PAGE 272  
DEED RECORDS  
C.S. FILE 43/92

COUNTY SURVEYORS FILE DATA  
DO NOT REMOVE FROM OFFICE



COUNTY SURVEYOR'S OFFICE  
DOUGLAS COUNTY, OREGON

SURVEY FOR DEED DESCRIPTION.

*Ben B. Irving*

BEN. B. IRVING COUNTY SURVEYOR  
SURVEYED MAR. 6, 1953 SCALE 1" = 50'  
SURVEYED FOR VAN E. WOODARD