

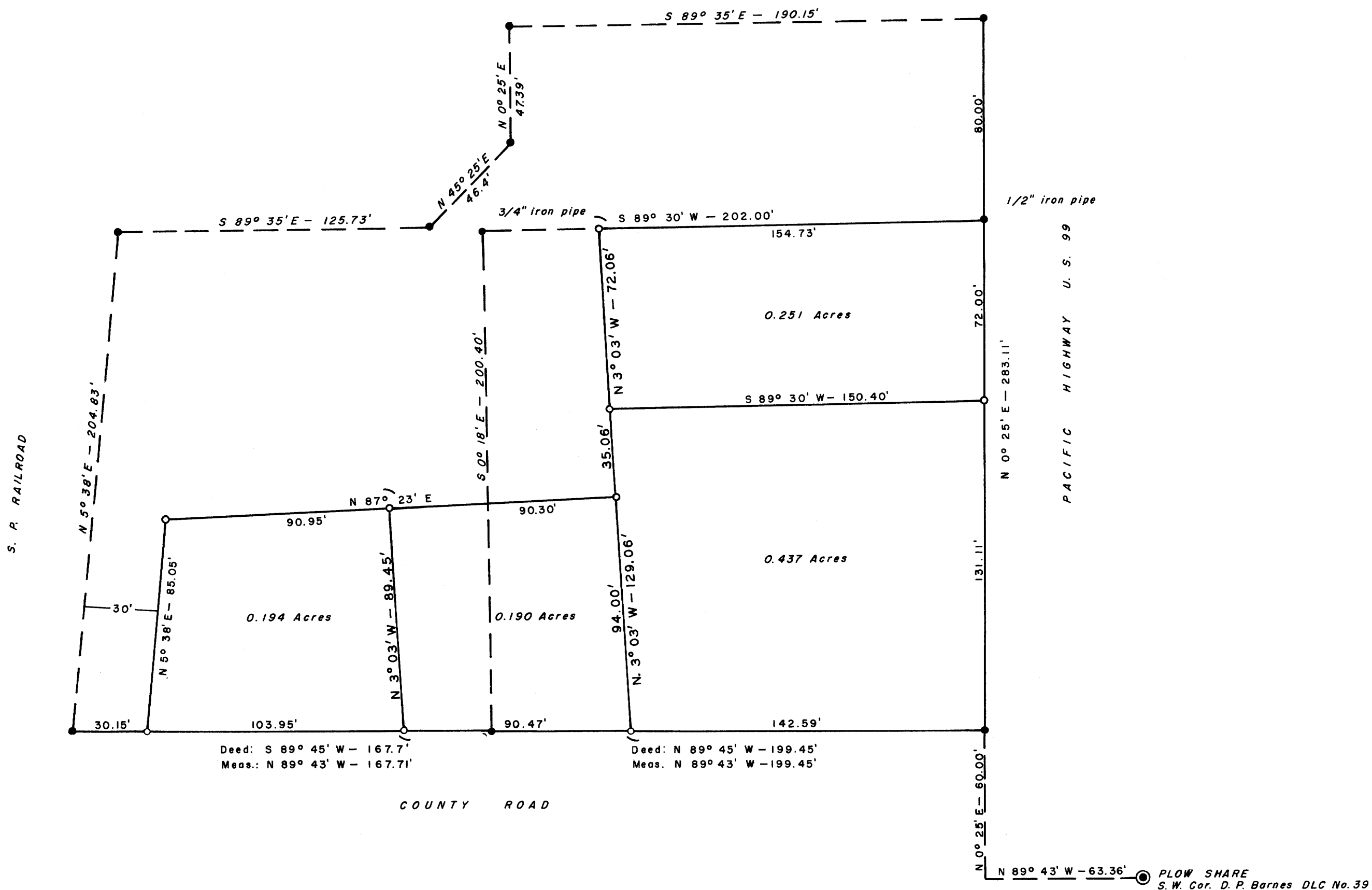
COUNTY SURVEYOR'S OFFICE  
DO NOT REMOVE FROM OFFICE

# SURVEY FOR DEED DESCRIPTION SEC. 12, T. 27 S., R. 6 W., W. M.

SURVEYED FOR: MRS. R. L. RICHTER  
SURVEYED BY: G. R. LECKLIDER - ENG'R.

APRIL, 1959  
SCALE: 1" = 40'

- DENOTES CORNER FOUND
- DENOTES 1/2" IRON ROD SET



- NOTE:
1. Dash lines show deed bearings and distances
  2. Bearings based on line between S.W. Cor. D. P. Barnes DLC. No.39 & N.W. Cor. S. G. Braden DLC. No. 63

FILED *LL*  
REMOVED

MAY 4 1959

COUNTY SURVEYOR  
CORWELL COUNTY, IOWA

NOTE:  
ERRORS IN DRAFTING CORRECTED AS SHOWN, LINES  
CHANGED MARKED THUS ( )  
CORRECTED OCT. 21, 1964

*G. Robert Lecklider*  
G. ROBERT LECKLIDER

